

At _____ O'Clock _____ M
THOMAS H. LEIGHTON
REGISTER OF DEEDS
Recorders Data

This form is intended to fulfill the requirements of Chapter A-E7.08 (3)(a) thru (i) U.S. Public Land Survey Monument Location Record, Wisconsin Administrative Code. Use the reverse side of form for continuation.

U.S. PUBLIC LAND SURVEY MONUMENT LOCATION RECORD

USPLS CORNER: SOUTH WITNESS MC SECTION: 17 TOWNSHIP: 38 NORTH RANGE: 06 EAST

NAME OF WATERWAY FOR M.C. CORNER : SEVENTEEN LAKE SECTION LINE: WEST

~~(CITY)(VILLAGE)(TOWN)~~ OF: HAZELHURST COUNTY OF: ONEIDA

Description of monument found or placed and all other evidence used as the basis for monument location; including monuments and measurements required if the corner location was reestablished by lost corner proportionate methods. Also indicate name of the original surveyor, original survey date and the corner monument, bearing trees, witness or other reference monuments established, including measured bearing and distance ties, from available survey records.

In September/October 1863, Alexander Anderson/GLO set a wood post as the original MC and noted OBTs: a 6" Aspen S35°W 30 links and that there was no other tree near; all are now obliterated.

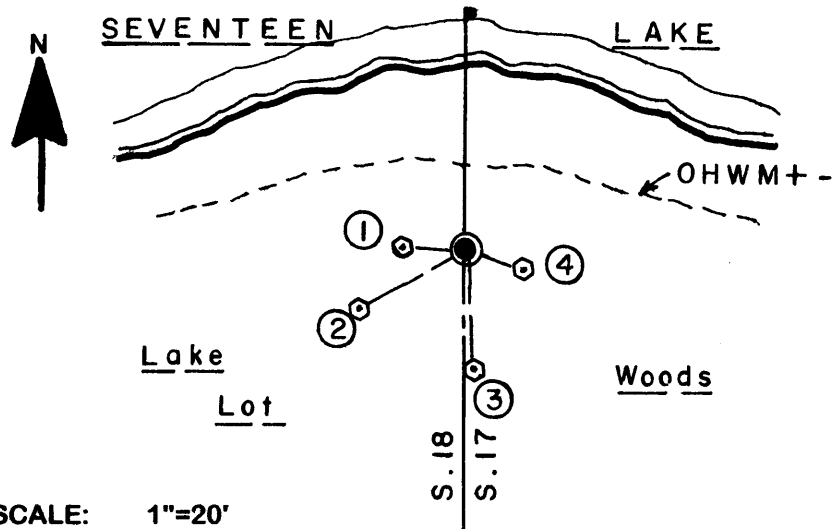
In July 1970, John H. Fisher/RLS 836 found and accepted a 5"x5" concrete monument at this Witness MC per notation on his Neuville's Joy Camp Subdivision Plat map filed in Oneida County records as Document No. P000400.

On August 8, 2006 I found an old undisturbed 5" square concrete monument with a cross cast in its top 7" above a cairn of rocks around the monument at grade. I carefully cleaned the top of the monument and affixed a stamped Oneida County aluminum tablet with "Liquid Nails" adhesive for future identification and centering purposes.

The corner falls at the NE corner of an improved lake frontage parcel at Fire No. 6520 at the East dead end of Hideaway Lane, 8.5' South of estimated OHWM and 19' South of existing rocky lake shoreline of an upland point of land. The corner is also noted as being 149.45' North of the West 1/4 corner of Section 17, which is currently monumented with a standard Oneida County aluminum monument below grade as referenced by Jeff Austin/RLS 1885 in September 1991 per Oneida County records.

There were no direct witnesses.

Plan view map of monument location with bearing and distance ties to a minimum of four(4) described witness or reference monuments of concrete, natural stone, iron, live bearing trees or equivalent material. If applicable, also show a minimum of two(2) bearing and distance ties to any other monument found and not accepted; including the bearing and distance from the accepted monument.



WITNESS MONUMENT TIES:

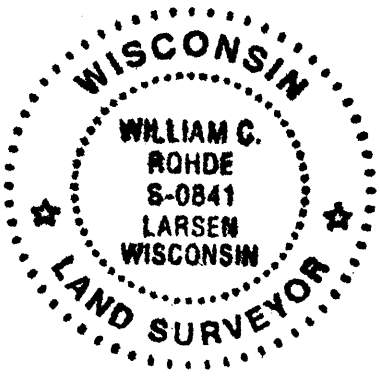
- ① New 7" Mr BT West 6.60'.
- ② New 4.5" Pw BT S60°W 12.55'.
- ③ New 5" Pw BT S03°E 12.62'.
- ④ New 6.5" Pw BT S70°E 6.22'.

No standard white poly 'T' marker post was set nearby due to very rocky subgrade conditions. No older BTs were visibly evidenced.

SCALE: 1"=20'

Unless otherwise indicated, all bearing tree ties are to a .25" dia. by 2.5" long PK nail with a 1.25" dia. steel washer driven into unblazed right face and a .25" dia. by 2.5" long PK nail with a 2" dia. steel washer stamped BT is also driven into unblazed face of bearing tree at DBH; the basis for measured bearings is by compass to nearest degree and all tie distances are measured horizontal by steel tape corrected to nearest 1/100th feet at standard temperature of 68° F.

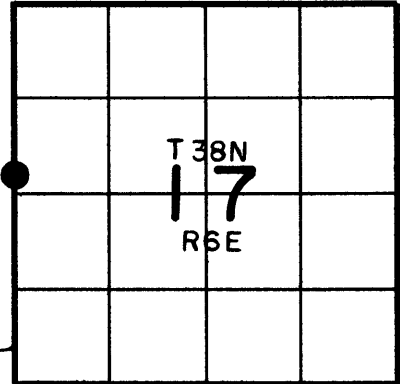
RLS SEAL:



LAND SURVEYOR CERTIFICATE:

I, William C. Rohde, hereby certify that I am duly licensed as a Professional Land Surveyor in the State of Wisconsin; that this USPLS monument location was determined by me and/or under my direct supervision and control; and that this U.S. Public Land Survey Monument Location Record is true and correct to the best of my knowledge and belief.

Signed: *William C. Rohde*
William C. Rohde RLS 841



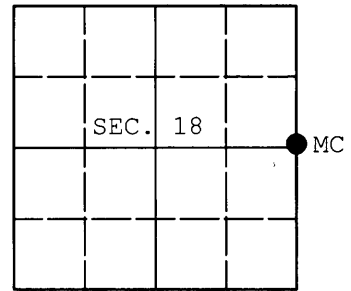
SECTION LOCATION MAP

INDEX NO. K-L 5
3806182100

U.S. PUBLIC LAND SURVEY MONUMENT RECORD

Note: This form is intended and designed to fulfill all requirements of Wisconsin Administrative Code, Chapter A-E 7.08 U.S. Public Land Survey Monument Record (3) (a) (b) (c) (d) (e) (f) (g) (h) (i). An additional sheet may be added if necessary to conform with said requirements.

(a) CORNER LOCATION: WISCRS (Oneida County)
Meander Cor. of Secs. 17 & 18 N: 217,717.95 USft
Township 38 North E: 170,663.38 USft
Range 6 East of the 4th P.M. Datum: NAD 1983(2011)
Town of Hazelhurst County of Oneida



(b) HISTORY OF ORIGINAL CORNER ESTABLISHMENT

Original Surveyor: Original Accessories:
Date of Survey: Commenced:
Completed:

(b) (f) (g) (h) Description of monument found at this corner and if it was accepted, state all evidence (material, testimonial, occupational, plats, records, other monuments) used as a basis for accepting. If not accepted or if nothing was found, state evidence used as basis for establishing location. If re-established through lost corner proportionate methods, indicate all monuments, distances and directions used to establish. Indicate type of monument and sign post found or set.

NOTE: This is a perpetuation of a previous USPLS Monument Record by William C. Rohde, RLS dated December 20, 2006 and filed in the office of the Oneida County Register of Deeds. A complete history of the corner can be found on the previous monument record. I accept the previous location as a true and faithful perpetuation or reestablishment of the original corner location and further perpetuate it as follows.

June 4, 2014: I found and accepted Rohde's monument, a 5" sq. concrete monument with Oneida County aluminum cap. Rohde's accessories were found in substantial agreement with his previous record and were not remeasured as the sole purpose of this work is to report the coordinates of the corner point.

The coordinates shown were derived from offset RTN GPS observations referenced to the WISCORS network.

(c) (d) (e) Plan view of corner with ties to at least 4 witness monuments. If in disagreement with previously established corner, show the distances between the two corners and also indicate the ties to the disputed.

REGISTER OF DEEDS OFFICE
ONEIDA COUNTY
FILED

JUL 03 2014

AT _____ O'CLOCK _____ M
KYLE J. FRANSON
REGISTER OF DEEDS

(i) I, Jeffrey W. Austin, Registered Land Surveyor No. S-1885, hereby certify that the corner location on this record was determined by me or under my direction and control and that this U.S. Public Land Survey Monument Record is correct and complete to the best of my knowledge and belief.



[Handwritten Signature]
Signature

JUNE 28, 2014
Date