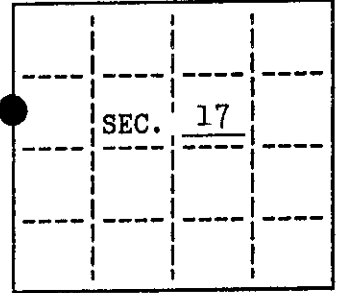


U.S. PUBLIC LAND SURVEY MONUMENT RECORD

Note: This form is intended and designed to fulfill all requirements of Wisconsin Administrative Code, Chapter A-8 7.08 U.S. Public Land Survey Monument Record (3)(a)(b)(c)(d)(e)(f)(g)(h)(i). An additional sheet may be added if necessary to conform with said requirements.

(a) CORNER LOCATION: State Plane Coordinates
 Meander corner of Sec. 17 X _____
 Township 38 North Y _____
 Range 6 East Datum Base _____
 Town/City Hazelhurst County of Oneida

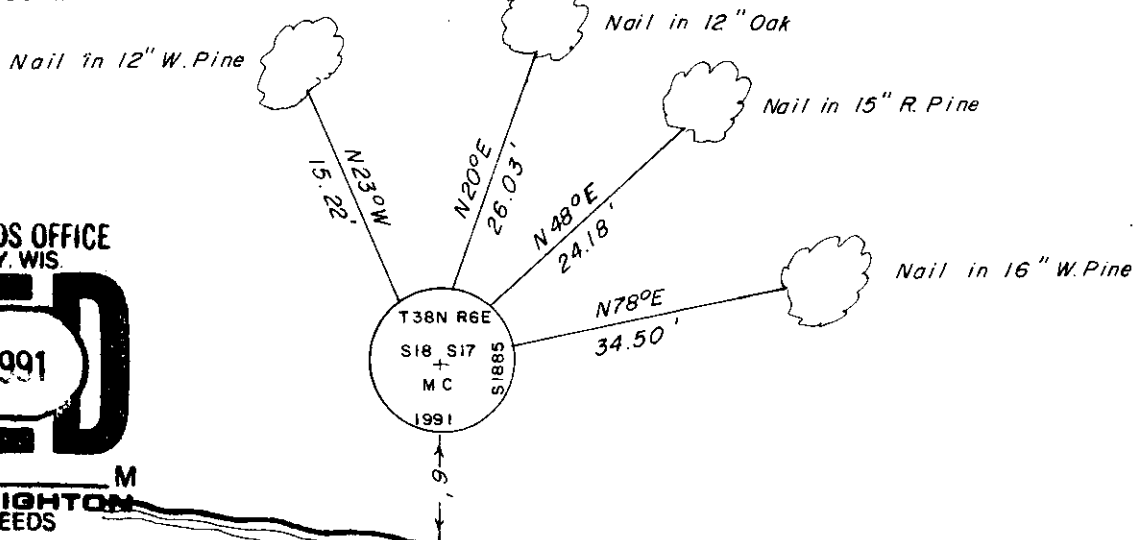


(b) HISTORY OF ORIGINAL CORNER ESTABLISHMENT. Original B.T.'S
 Original Surveyor: Alexander Anderson
 Date of Survey: Commenced Sept. 1863
 Completed Oct. 1863
 Aspen 10 N30°W, 166
 B.Oak 8 N80°E, 77

(b)(f)(g)(h) Description of monument found at this corner and if it was accepted, state all evidence (material, testimonial, occupational, plats, records, other monuments) used as a basis for accepting. If not accepted or if nothing was found, state evidence used as basis for establishing location. If reestablished through lost corner proportionate methods, indicate all monuments, distances and directions used to establish. Indicate type of monument and sign post found or set.

See reverse...

(c)(d)(e) Plan view of corner with ties to at least 4 witness monuments. If in disagreement with previously established corner, show the distances between the two corners and also indicate the ties to the disputed.

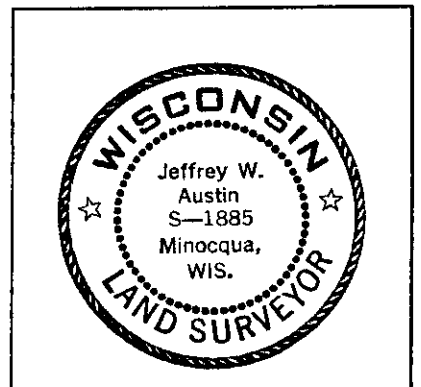


REGISTER OF DEEDS OFFICE
 ONEIDA COUNTY, WIS.
FILED
 SEP 16 1991
 At _____ O'Clock _____ M
 THOMAS H. LEIGHTON
 REGISTER OF DEEDS

Not to scale.

LAKE SEVENTEEN

(i) I, Jeffrey W. Austin, Registered Land Surveyor hereby certify that the corner location on this record was determined by me or under my direction and control and that this U.S. Public Land Survey Monument Record is correct and complete to the best of my knowledge and belief.



INDEX NO. **KL-6**

Signature *Jeffrey W. Austin* Date 9-12-1991

3806182600

May, 1949: Notes by Wincentzen, concrete monument, W.Pine 10 N74°E, 34.8'; N.Pine 10 N45°E, 24.5'.

July, 1968: Section subdivision by John Fisher, concrete monument, 14" W.Pine N74°E, 34.3'; 14" N.Pine N46°E, 24.0'.

September 11, 1991: I found and accepted a 5" sq. 42" long concrete monument 6 feet North of Lake Seventeen. I replaced this monument with a 2-1/2" dia. 30" long aluminum pipe with a 3-1/4" dia. Oneida Co. aluminum cap set 6" above the ground and marked as shown on the reverse side of this record. I also set a DEEP-1 magnet below the new monument. I found the following witnesses: (Wincentzen) set nail in R.Pine 15" N48°E, 24.18 feet; (Wincentzen) set nail in W.Pine 16" N78°E, 34.50 feet. I established the following witnesses: set nail in W.Pine 12" N23°W, 15.22 feet; set nail in Oak 12" N20°E, 26.03 feet; set plastic sign post Northeast, 1-1/2 feet. The new bearing trees were not blazed.