

U.S. PUBLIC LAND SURVEY MONUMENT RECORD

REGISTER OF DEEDS OFFICE
ONEIDA COUNTY
FILED

JUN 01 2017

Note: This form is intended and designed to fulfill all requirements of the Wisconsin Administrative Code, Chapter A-E 7.08 U.S. Public Land Monument Record (3)(a)(b)(c)(d)(e)(f)(g)(h)(i). An additional sheet may be added if necessary to conform with said requirements.

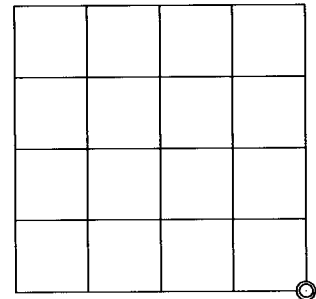
AT _____ O'CLOCK _____ M
KYLE J. FRANSON
REGISTER OF DEEDS

(a) CORNER LOCATION:
Southeast Corner of Section 19
Township 38 North
Range 6 East
Town of Hazelhurst
County of Oneida

WISCRS - Oneida County
North: 209735.033 USft
East: 170677.066 USft
Latitude: 45° 45' 39.67101" N
Longitude: 89° 46' 36.66888" W
Datum: NAD 83(2011)
GNSS Method: RTK - Direct
GNSS Control: WISCORS VRS
Record North: 209735.005 USft
Record East: 170677.151 USft
Record Datum: NAD 83(1991)

(RECORDING AREA)

SECTION 19



(b) HISTORY OF ORIGINAL CORNER ESTABLISHMENT

Original Surveyor: Alexander Anderson
Date of Survey: Commenced September 28th, 1863
Completed October 5th, 1863
Original B.T.'S: Spruce 6" N 18°E, 37 lks.
Spruce 6" N 9°W 54 lks.

(f)(g)(h) DESCRIPTION OF MONUMENT FOUND AT THIS CORNER AND IF IT WAS ACCEPTED, STATE ALL EVIDENCE (MATERIAL, TESTIMONIAL, OCCUPATIONAL, PLATS, RECORD, OTHER MONUMENTS) USED AS A BASIS FOR ESTABLISHING LOCATION. IF NOT ACCEPTED OR IF NOTHING WAS FOUND, STATE EVIDENCE USED AS BASIS FOR ESTABLISHING LOCATION. IF REESTABLISHED THROUGH LOST CORNER PROPORTIONATE METHODS, INDICATE ALL MONUMENTS, DISTANCES AND DIRECTIONS USED TO ESTABLISH. INDICATE TYPE OF MONUMENT AND SIGN POST FOUND OR SET.

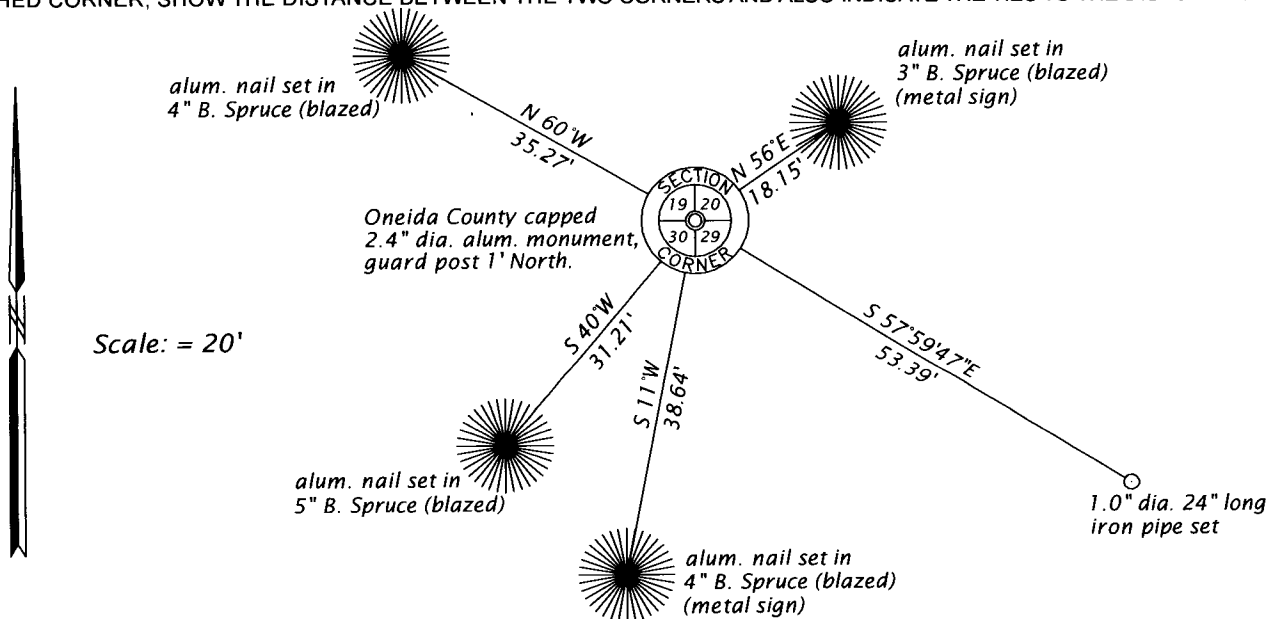
June 6, 1922 - D. H. Vaughan, Oneida County Surveyor, (Old Field Book 9, pages 75 through 77, and also in Old Field Book 60, pages 77 through 79) survey in Section 19, T38N, R6E, "found NE tree ok and original post, set new post".

October 13 to 30, 1947 - E. F. Kowalke, Surveyor, (Kowalke Field Book 6, pages 3 and 11) survey in Section 19, T38N, R6E, "Found Og. NW B.T. dead & standing, old notched stake under moss. Set new cedar post & iron pipe. Re-marked O.B.T. N10 1/2°W, 35.5 feet; new spruce 4" S77 1/2°W, 22 feet".

April 6, 2017 - James D. Rein, PLS No. 1234, we found a 1" dia. iron pipe in a bog wetland, exposed 3", and a 6" sq. wood post adjacent to the east. The monument position is harmonious with Kowalke's record, thus I accept it as a perpetuation of the original corner and we drove an Oneida County capped 2.4" dia. x 60" long aluminum monument over pipe, and made new reference ties as shown in the plan.

The coordinate value shown has been verified by at least one of the following methods: 1) comparison to a previously GPS determined published value; 2) the value is the average of two or more GPS observations at a markedly different time; 3) one or more distances were measured back to the GPS observed corner from temporary GPS observed offset locations.

(c)(d)(e) PLAN VIEW OF CORNER WITH TIES TO AT LEAST 4 WITNESS MONUMENTS. IF IN DISAGREEMENT WITH PREVIOUSLY ESTABLISHED CORNER, SHOW THE DISTANCE BETWEEN THE TWO CORNERS AND ALSO INDICATE THE TIES TO THE DISPUTED CORNER.



(i) I, JAMES D. REIN, PROFESSIONAL LAND SURVEYOR NO. S-1234 HEREBY CERTIFY THAT THE CORNER LOCATION ON THIS RECORD WAS DETERMINED BY ME OR UNDER MY DIRECTION AND CONTROL AND THAT THIS U.S. PUBLIC LAND SURVEY MONUMENT RECORD IS CORRECT AND COMPLETE TO THE BEST OF MY KNOWLEDGE AND BELIEF.



[Handwritten Signature]
SIGNATURE

5-24-17
DATE

INDEX NO. R - 5
3806190000