

U.S. PUBLIC LAND SURVEY MONUMENT RECORD

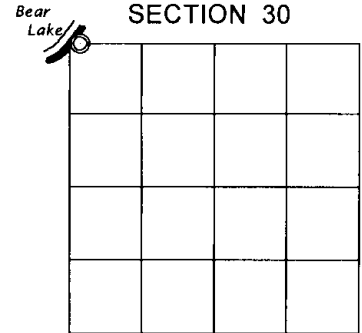
DEC 20 2016

Note: This form is intended and designed to fulfill all requirements of the Wisconsin Administrative Code, Chapter A-E 7.08 U.S. Public Land Monument Record (3)(a)(b)(c)(d)(e)(f)(g)(h)(i). An additional sheet may be added if necessary to conform with said requirements.

AT \_\_\_\_\_ O'CLOCK \_\_\_\_\_ M  
KYLE J. FRANSON  
REGISTER OF DEEDS

(a) CORNER LOCATION: COORDINATES  
Meander Corner north line Section 30 North:  
Township 38 North East:  
Range 6 East Projection:  
Town of Hazelhurst Datum:  
County of Oneida Method:

(RECORDING AREA)



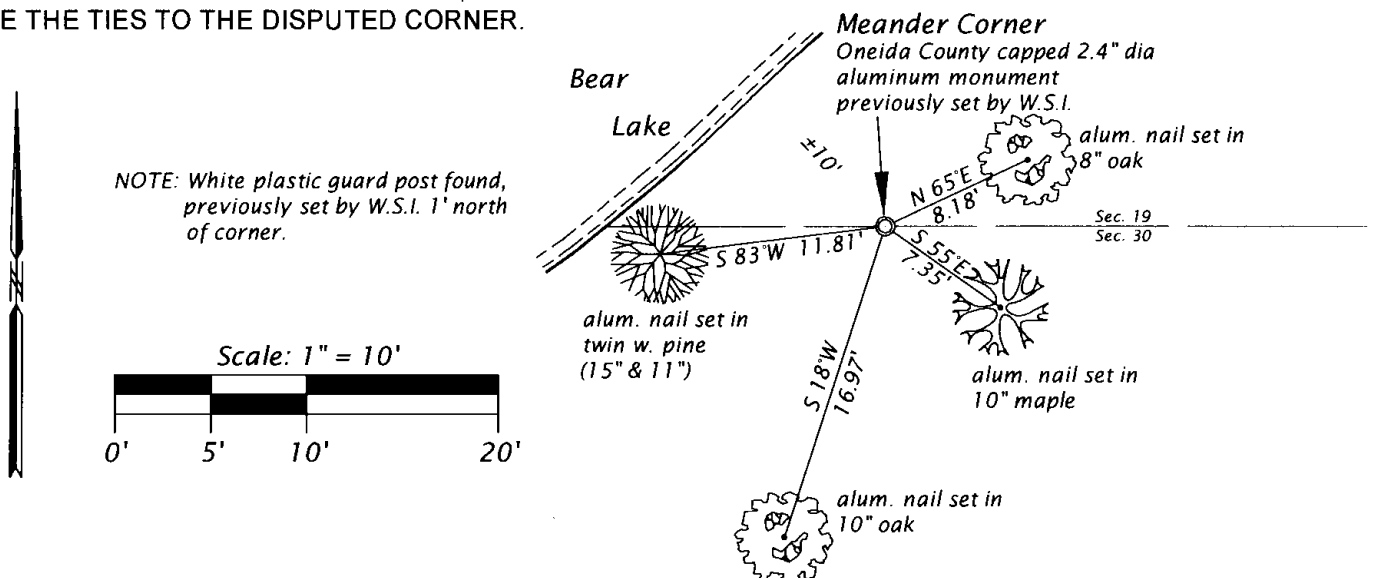
(b) HISTORY OF ORIGINAL CORNER ESTABLISHMENT

Original Surveyor: Alexander Anderson  
Date of Survey: Commenced September 28, 1863  
Completed October 5, 1863  
Original B.T.'S: 16" y. pine, S 32°W, 6 lks.  
10" w. pine, N 75°E, 18 lks.

(f)(g)(h) DESCRIPTION OF MONUMENT FOUND AT THIS CORNER AND IF IT WAS ACCEPTED, STATE ALL EVIDENCE (MATERIAL, TESTIMONIAL, OCCUPATIONAL, PLATS, RECORDS, OTHER MONUMENTS) USED AS A BASIS FOR ESTABLISHING LOCATION. IF NOT ACCEPTED OR IF NOTHING WAS FOUND, STATE EVIDENCE USED AS BASIS FOR ESTABLISHING LOCATION. IF REESTABLISHED THROUGH LOST CORNER PROPORTIONATE METHODS, INDICATE ALL MONUMENTS, DISTANCES AND DIRECTIONS USED TO ESTABLISH. INDICATE TYPE OF MONUMENT AND SIGN POST FOUND OR SET.

- 1947 - October, 1947, E.F. Kowalke's Book 6, pages 4 & 7 shows a traverse from S 1/4 of Sec. 19 to an I.P. at the M. C. position. His distance to the S 1/4 was 2278.32'. He found two pine stumps: N 75°E, 12.0' and S 32°E, 12.0'
- 1959 - On a survey map by William S. Cameron, Northwoods Surveyors, dated November, 1959, last revised Aug., 1967, he shows an iron pipe at the meander corner position. Distance to S 1/4, Section 19 = 2276.1'. See Oneida County Surveyor's File #A0795.
- 1968 - John H. Fisher, Northwoods Surveyors, Inc., subdivides a portion of Gov't. Lot 3, Section 19, and shows an iron pipe found in place at the meander corner position. Distance to S 1/4, Section 19 = 2274.1'. See Oneida County Surveyor's File #C1325.
- 1998 - December 29, 1998, James D. Rein, while surveying in Gov't. Lots 1 & 3, Section 30, set an Oneida County capped 2.4" dia. x 30" long aluminum monument to replace a 1.5" dia. iron pipe found in place at the meander corner position. Distance to N 1/4, Section 30 = 2273.91'. See Oneida County Certified Survey Map #2181. Field notes show new BT's.: 6" oak, N 65°E, 8.18'; 7" maple, S 55°E, 7.35'; 7" twin w. pine, S 83°W, 11.81' and 4" oak, S18°W, 16.97'.
- 2016 - December 2, 2016, James D. Rein, found the aluminum monument and the previous bearing trees in good condition.

(c)(d)(e) PLAN VIEW OF CORNER WITH TIES TO AT LEAST 4 WITNESS MONUMENTS. IF IN DISAGREEMENT WITH PREVIOUSLY ESTABLISHED CORNER, SHOW THE DISTANCE BETWEEN THE TWO CORNERS AND ALSO INDICATE THE TIES TO THE DISPUTED CORNER.



(i) I, JAMES D. REIN, PROFESSIONAL LAND SURVEYOR NO. S-1234 HEREBY CERTIFY THAT THE CORNER LOCATION ON THIS RECORD WAS DETERMINED BY ME OR UNDER MY DIRECTION AND CONTROL AND THAT THIS U.S. PUBLIC LAND SURVEY MONUMENT RECORD IS CORRECT AND COMPLETE TO THE BEST OF MY KNOWLEDGE AND BELIEF

SIGNATURE \_\_\_\_\_ DATE 12-15-16



3806 190039

INDEX NO. R-1-2

# U.S. PUBLIC LAND SURVEY MONUMENT RECORD

REGISTER OF DEEDS OFFICE  
ONEIDA COUNTY  
FILED

JUN 01 2017

Note: This form is intended and designed to fulfill all requirements of the Wisconsin Administrative Code, Chapter A-E 7.08 U.S. Public Land Monument Record (3)(a)(b)(c)(d)(e)(f)(g)(h)(i). An additional sheet may be added if necessary to conform with said requirements.

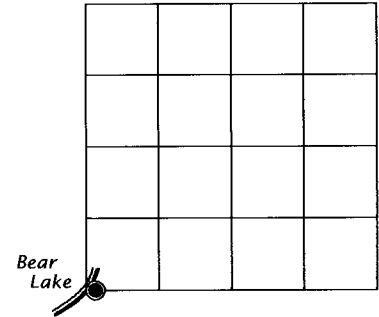
(a) CORNER LOCATION:  
Meander Corner south line of Section 19  
Township 38 North  
Range 6 East  
Town of Hazelhurst  
County of Oneida

WISCRS - Oneida County  
North: 209764.366 USft  
East: 165779.041 USft  
Latitude: 45° 45' 39.81441" N  
Longitude: 89° 47' 45.74968" W  
Datum: NAD 83(2011)  
GNSS Method: RTK - Offset  
GNSS Control: WISCORS VRS  
Record North: 209764.459 USft  
Record East: 165779.105 USft  
Record Datum: NAD 83(1991)

AT \_\_\_\_\_ O'CLOCK \_\_\_\_\_ M  
KYLE J. FRANSON  
REGISTER OF DEEDS

(RECORDING AREA)

SECTION 19



(b) HISTORY OF ORIGINAL CORNER ESTABLISHMENT

Original Surveyor: Alexander Anderson  
Date of Survey: Commenced September 28th, 1863  
Completed October 5th, 1863  
Original B.T.'S: Y. Pine 16" S 32°W, 6 lks.  
W. Pine 10" N 75°E 18 lks.

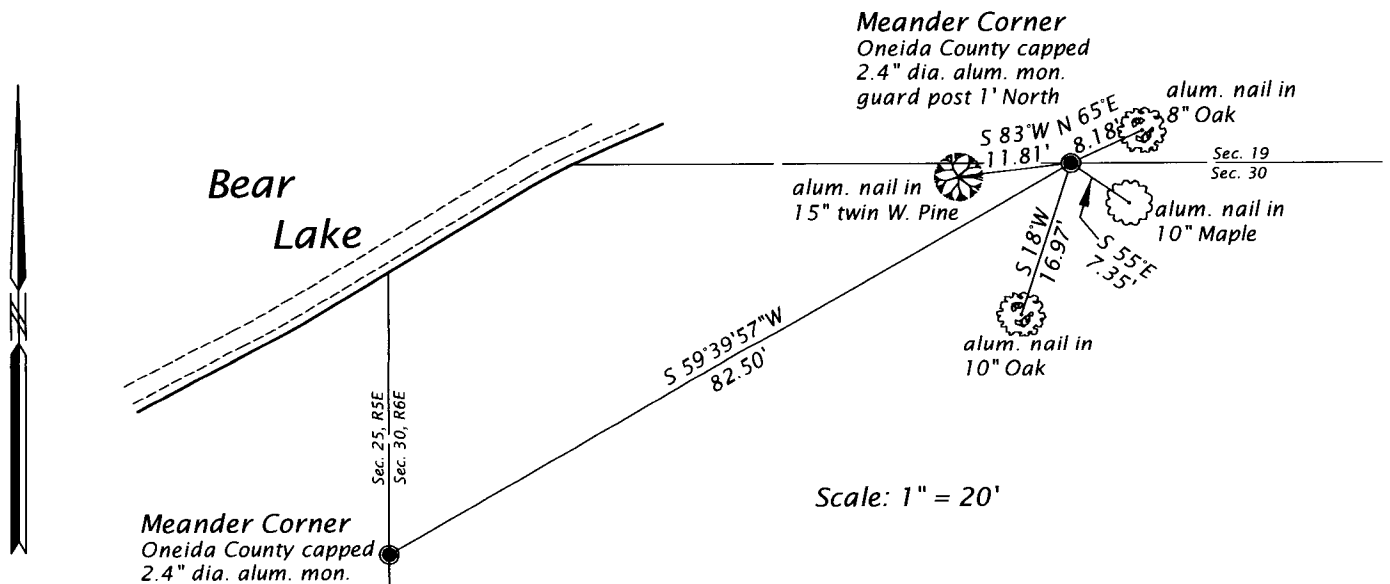
(f)(g)(h) DESCRIPTION OF MONUMENT FOUND AT THIS CORNER AND IF IT WAS ACCEPTED, STATE ALL EVIDENCE (MATERIAL, TESTIMONIAL, OCCUPATIONAL, PLATS, RECORD, OTHER MONUMENTS) USED AS A BASIS FOR ESTABLISHING LOCATION. IF NOT ACCEPTED OR IF NOTHING WAS FOUND, STATE EVIDENCE USED AS BASIS FOR ESTABLISHING LOCATION. IF REESTABLISHED THROUGH LOST CORNER PROPORTIONATE METHODS, INDICATE ALL MONUMENTS, DISTANCES AND DIRECTIONS USED TO ESTABLISH. INDICATE TYPE OF MONUMENT AND SIGN POST FOUND OR SET.

June 6, 1922 - D. H. Vaughan, County Surveyor, (Old Field Book 9, pages 75 through 77, and also in Old Field Book 60, pages 77 through 79) survey in Section 19, T38N, R6E, "made new bearings for MC which is 101 E of SW corner} y. pine stp. 16" S22°E, 23 lks; y pine stp. 10" N89°E, 21 lks."

SEE CONTINUATION OF CORNER HISTORY IN MY U.S. PUBLIC LAND SURVEY  
MONUMENT RECORD, DATED DECEMBER 15, 2016 AND FILED DECEMBER 20, 2016

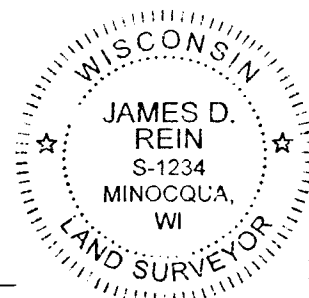
The coordinate value shown has been verified by at least one of the following methods: 1) comparison to a previously GPS determined published value; 2) the value is the average of two or more GPS observations at a markedly different time; 3) one or more distances were measured back to the GPS observed corner from temporary GPS observed offset locations.

(c)(d)(e) PLAN VIEW OF CORNER WITH TIES TO AT LEAST 4 WITNESS MONUMENTS. IF IN DISAGREEMENT WITH PREVIOUSLY ESTABLISHED CORNER, SHOW THE DISTANCE BETWEEN THE TWO CORNERS AND ALSO INDICATE THE TIES TO THE DISPUTED CORNER.



(i) I, JAMES D. REIN, PROFESSIONAL LAND SURVEYOR NO. S-1234 HEREBY CERTIFY THAT THE CORNER LOCATION ON THIS RECORD WAS DETERMINED BY ME OR UNDER MY DIRECTION AND CONTROL AND THAT THIS U.S. PUBLIC LAND SURVEY MONUMENT RECORD IS CORRECT AND COMPLETE TO THE BEST OF MY KNOWLEDGE AND BELIEF.

*[Signature]*  
SIGNATURE  
5-24-17  
DATE



INDEX NO. R 1-2  
3806190039