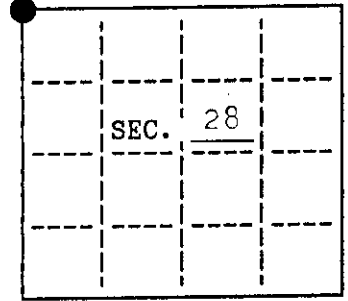


U.S. PUBLIC LAND SURVEY MONUMENT RECORD

Note: This form is intended and designed to fulfill all requirements of Wisconsin Administrative Code, Chapter A-E 7.08 U.S. Public Land Survey Monument Record (3)(a)(b)(c)(d)(e)(f)(g)(h)(i). An additional sheet may be added if necessary to conform with said requirements.

(a) CORNER LOCATION: State Plane Coordinates
NW corner of Sec. 28 X _____
 Township 38 North Y _____
 Range 6 East Datum Base _____
 Town/City Hazelhurst County of Oneida



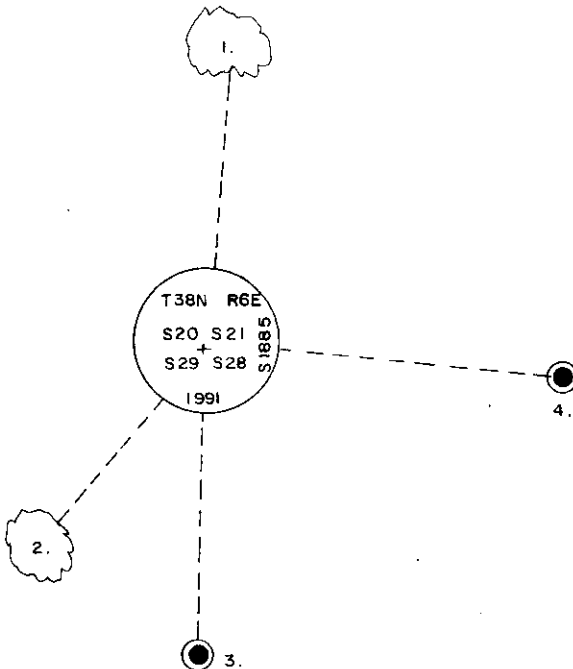
(b) HISTORY OF ORIGINAL CORNER ESTABLISHMENT.
 Original Surveyor: Alexander Anderson Original B.T.'S
 Date of Survey: Commenced Sept. 1863 y.pine 14 N37°E, 73 lks.
 Completed Oct. 1863 y.pine 16 S44°W, 25 lks.

(b)(f)(g)(h) Description of monument found at this corner and if it was accepted, state all evidence (material, testimonial, occupational, plats, records, other monuments) used as a basis for accepting. If not accepted or if nothing was found, state evidence used as a basis for establishing location. If reestablished through lost corner proportionate methods, indicate all monuments, distances and directions used to establish. Indicate type of monument and sign post found or set.

1964: Plat of Peaceful Shores by James Griffin: 2"x30" iron pipe;
 18" n.pine S39°W, 11.9'; 17" n.pine N15°W, 45.0'

September 21, 1991: I found and accepted a 2-1/4" dia., 20" long iron pipe. I replaced pipe with a 2-1/2" dia., 30" long aluminum pipe with 3-1/4" dia. Oneida Co. aluminum cap set 6" above ground and marked as shown. I found the following witnesses: set nail in r.pine 18" N5°E, 45.55 feet (Griffin); set nail in r.pine 20" S40°W, 12.35 feet (Griffin). I established the following witnesses: set aluminum monument (meander corner) S84°06.0'E, 68.49 feet; set aluminum monument (witness to meander corner) S1°34.6'W, 43.57 feet; set plastic sign post Northwest, 2 feet. I also set a Deep-1 magnet at the base of the new monument.

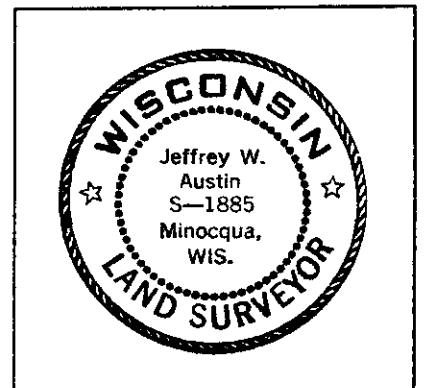
(c)(d)(e) Plan view of corner with ties to at least 4 witness monuments. If in disagreement with previously established corner, show the distances between the two corners and also indicate the ties to the disputed.



1. nail in r.pine 18" N5°E, 45.55 feet
 2. nail in r.pine 20" S40°W, 12.35 feet
 3. witness corner aluminum monument S1°34.6'W, 43.57 feet
 4. meander corner aluminum monument S84°06.0'E, 68.49 feet
- not to scale

(i) I, Jeffrey W. Austin, Reg. Land Surveyor hereby certify that the corner location on this record was determined by me or under my direction and control and that this U.S. Public Land Survey Monument Record is correct and complete to the best of my knowledge and belief.

Signature *Jeffrey W. Austin* Date 10-28-1991



INDEX NO. R-9

3806200000

U.S. PUBLIC LAND SURVEY MONUMENT RECORD

Note: This form is intended and designed to fulfill all requirements of Wisconsin Administrative Code, Chapter A-E 7.08 U.S. Public Land Survey Monument Record (3)(a-i).

(a) CORNER LOCATION
 Cor. of Secs. 20, 21, 28 & 29
 Township 38 North
 Range 6 East of the 4th P.M.
 Town of Hazelhurst
 County of Oneida

WISCORS - Oneida County
 N: 209,823.15 USft
 E: 176,054.77 USft
 Datum: NAD 83(2011)
 GNSS Method: RTN - Offset
 GNSS Control: WISCORS VRS

	SEC. 20		
	T38N	R6E	

(b) HISTORY OF ORIGINAL CORNER ESTABLISHMENT

Original Surveyor: _____ Original Accessories: _____
 Date of Survey Commenced: _____ See previous USPLS Monument Record
 Completed: _____

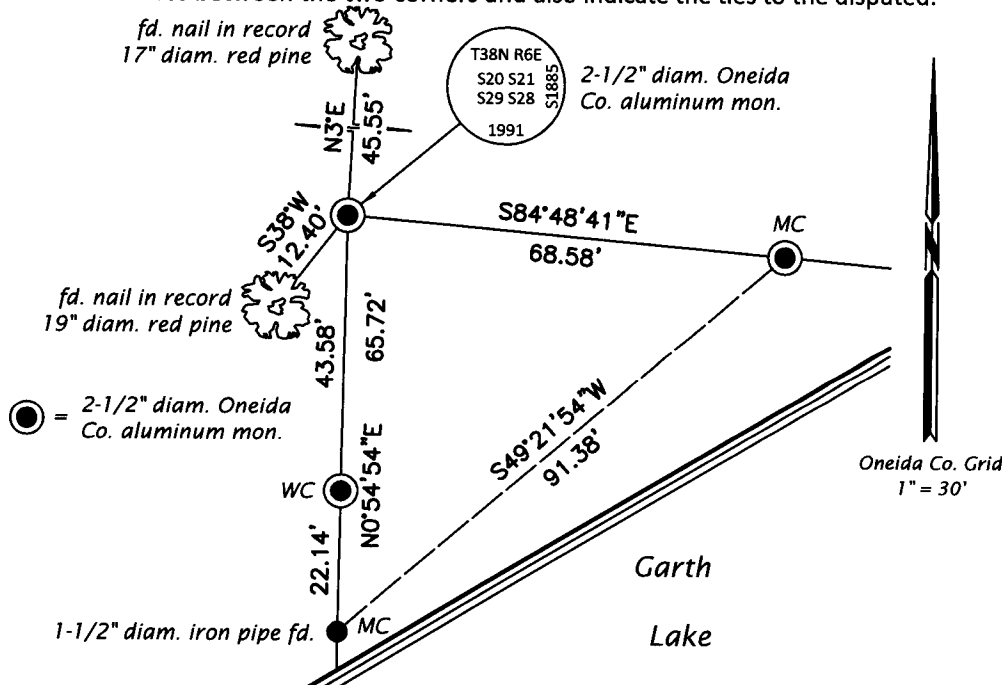
(b)(f)(g)(h) Description of monument found at this corner and if it was accepted, state all evidence (material, testimonial, occupational, plats, records, other monuments) used as a basis for accepting. If not accepted or if nothing was found, state evidence used as basis for establishing location. If re-established through lost corner proportionate methods, indicate all monuments, distances and directions used to establish. Indicate type of monument and sign post found or set.

This is a perpetuation of a previous USPLS Monument Record by Jeffrey W. Austin, RLS dated October 28, 1991 and filed in the office of the Oneida County Register of Deeds. A complete history of the corner can be found on the previous monument record. I accept the previous location as a true and faithful perpetuation or reestablishment of the original corner location and further perpetuate it as follows.

April 8, 2018: I found and accepted the record monument, a 2-1/2" diam. aluminum pipe with a 3-1/4" diam. Oneida Co. aluminum cap projecting 3" above the ground surface. I found or established accessories as shown below. I found a white vinyl sign post bearing Northwest, 1.8 ft.

The coordinate value shown has been verified by at least one of the following methods: 1) comparison to a previously GPS determined published value; 2) the value is the average of two or more GPS observations at a markedly different time; 3) one or more distances were measured back to the GPS observed corner from temporary GPS observed offset locations.

(c)(d)(e) Plan view of corner with ties to at least 4 witness monuments. If in disagreement with previously established corner, show the distances between the two corners and also indicate the ties to the disputed.



REGISTER OF DEEDS OFFICE
 ONEIDA COUNTY
 FILED
MAY 01 2018
 KYLE J. FRANSON
 REGISTER OF DEEDS

(i) I, Jeffrey W. Austin, Professional Land Surveyor No. S-1885, hereby certify that the corner location on this record was determined by me or under my direction and control and that this U.S. Public Land Survey Monument Record is correct and complete to the best of my knowledge and belief.

 Signature APR. 23, 2018
Date