

U.S. PUBLIC LAND SURVEY MONUMENT RECORD

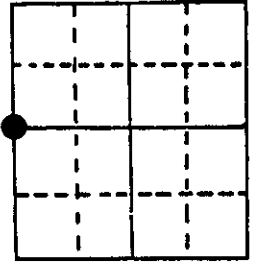
Note: This form is intended and designed to fulfill all requirements of Wisconsin Administrative Code, Chapter A-E 5.02, U.S. Public Land Survey Monument Record (3) (a) (b) (c) (d) (e) (f) (g) (h) (i). An additional sheet may be added if necessary to conform with said requirements.

(a) Corner location: Township 38 North

Range 6 East

Town Hazelhurst

County Oneida



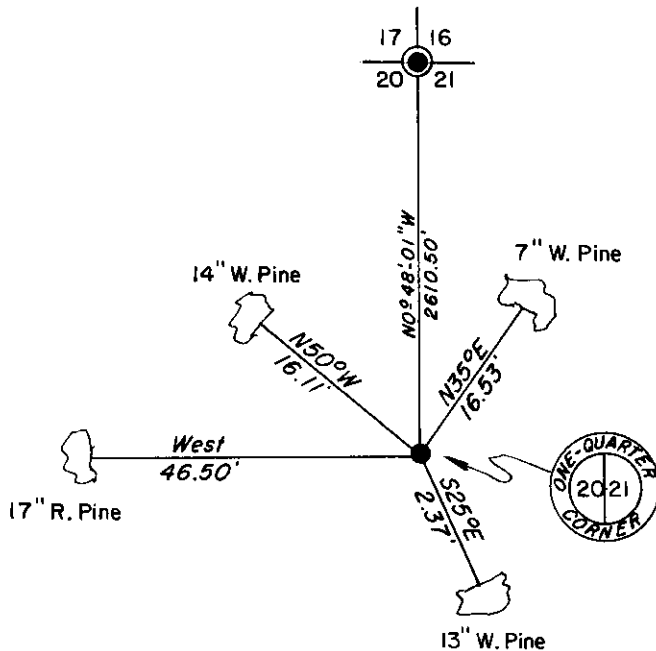
Section 21

(b) (f) (g) (h) Description of monument found at this corner and if it was accepted, state all evidence (material, testimonial, occupational, plats, records, other monuments) used as a basis for accepting. If not accepted or if nothing was found, state evidence used as basis for establishing location. If reestablished through lost corner proportionate methods, indicate all monuments, distances and directions used to establish.

Sept. 1863 - Alexander Anderson, Gov't. Deputy Surveyor, set quarter section post. Original bearing trees: Birch 8" S43°W, 6 lks; Hemlock 8" N42°E, 9 lks.

Feb 29, 1984 - Jerome N. Kraemer, Registered Land Surveyor, found 1 1/4" dia. iron pipe protruding up 12" above ground level and a 4" square scribed wood post. Existing bearing trees found: W. Pine 13" S25°E, 2.37'; 14" W. Pine N50°W, 16.11 feet. March 16, 1984, I replaced found 1 1/4" dia. iron pipe with an Oneida County 2" dia. and 42" long break away aluminum monument protruding up 8" above ground level with a cast aluminum cap stamped to identify corner. Blazed, scribed and set nail in side of new bearing trees as shown in plan view below.

(c) (d) (e) Plan view of corner with ties to at least 4 witness monuments. If in disagreement with previously established corner, show the distances between the two corners and also indicate the ties to the disputed corner.



BEARINGS MAGNETIC



(i) I, Jerome N. Kraemer, Registered Land Surveyor No. S-1448
 (type or print name) certify that the corner location on this record was determined by me or under my direction and control and that this U.S. Public Land Survey Monument Record is correct and complete to the best of my knowledge and belief.

Jerome N. Kraemer
 Signature

April 2, 1984

Date



Index No.

3806202000