

# U.S. PUBLIC LAND SURVEY MONUMENT RECORD

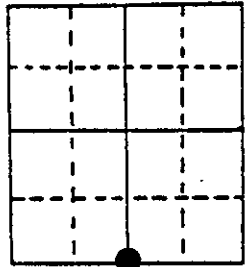
Note: This form is intended and designed to fulfill all requirements of Wisconsin Administrative Code, Chapter A-E 5.02, U.S. Public Land Survey Monument Record (3) (a) (b) (c) (d) (e) (f) (g) (h) (i). An additional sheet may be added if necessary to conform with said requirements.

(a) Corner location: Township 38 North

Range 6 East/West

Town/City/Village Hazelhurst

County Oneida



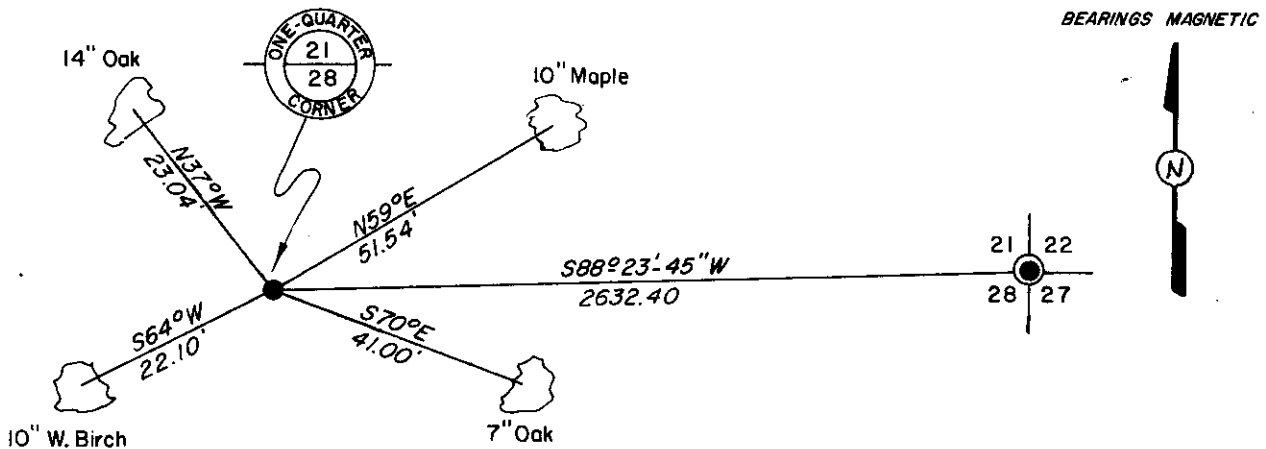
Section 21

(b) (f) (g) (h) Description of monument found at this corner and if it was accepted, state all evidence (material, testimonial, occupational, plats, records, other monuments) used as a basis for accepting. If not accepted or if nothing was found, state evidence used as basis for establishing location. If reestablished through lost corner proportionate methods, indicate all monuments, distances and directions used to establish.

Sept. 1863 - Alexander Anderson, Gov't. Deputy Surveyor, set quarter section post. Original bearing trees: Birch 8" N10°E, 45 links; W. Pine 40" N50°W, 20 links.

Feb. 1984 - Jerome N. Kraemer, Registered Land Surveyor, found 2" iron pipe and old 4" square cedar post scribed 1/4 S. Found bearing trees: 10" W. Birch S64°W, 22.10 feet; 18" Oak S26°W, 2.2 feet; 24" Oak N32°E, 20.0 feet. On March 16, 1984 I replaced found iron pipe with a 2" dia. 60" long galv. iron pipe protruding up 12" above ground level with a brass cap stamped to identify corner. Blazed, scribed and set nail in bearing trees as shown in plan view below. Corner lies 7 feet west of power line.

(c) (d) (e) Plan view of corner with ties to at least 4 witness monuments. If in disagreement with previously established corner, show the distances between the two corners and also indicate the ties to the disputed corner.



(i) I, Jerome N. Kraemer, Registered Land Surveyor No. S-1448  
(type or print name) certify that the corner location on this record was determined by me or under my direction and control and that this U.S. Public Land Survey Monument Record is correct and complete to the best of my knowledge and belief.



Jerome N. Kraemer Signature April 2, 1984 Date

3806210020

Index No. 2-11