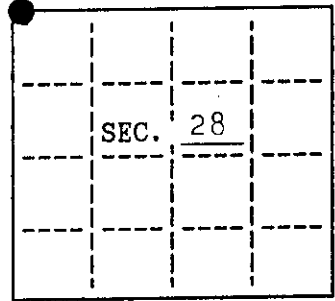


**U. S. PUBLIC LAND SURVEY MONUMENT RECORD**

Note: This form is intended and designed to fulfill all requirements of Wisconsin Administrative Code, Chapter A-E 7.08 U.S. Public Land Survey Monument Record (3)(a)(b)(c)(d)(e)(f)(g)(h)(i). An additional sheet may be added if necessary to conform with said requirements.

(a) CORNER LOCATION: State Plane Coordinates  
 meander corner of Sec. 28 X \_\_\_\_\_  
 Township 38 North Y \_\_\_\_\_  
 Range 6 East Datum Base \_\_\_\_\_  
 Town/City Hazelhurst County of Oneida



(b) HISTORY OF ORIGINAL CORNER ESTABLISHMENT  
 Original Surveyor: Alexander Anderson  
 Date of Survey: Commenced Sept. 1863  
 Completed Oct. 1863

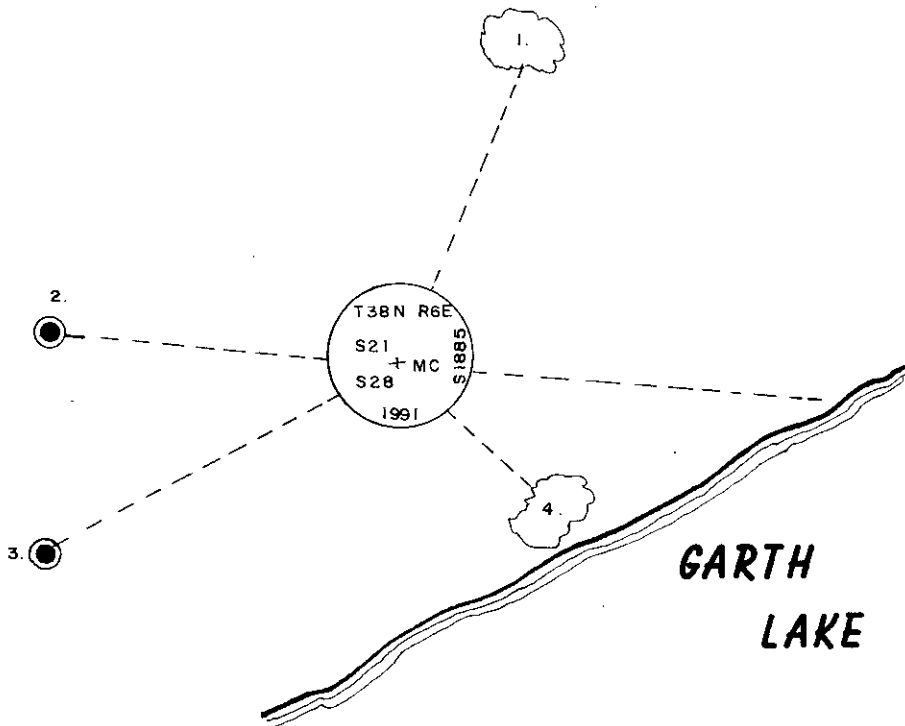
Original B.T.'S  
 y.pine 8 S89°W, 16 lks.  
 y.pine 15 N18°W, 24 lks.

(b)(f)(g)(h) Description of monument found at this corner and if it was accepted, state all evidence (material, testimonial, occupational, plats, records, other monuments) used as a basis for accepting. If not accepted or if nothing was found, state evidence used as basis for establishing location. If reestablished through lost corner proportionate methods, indicate all monuments, distances and directions used to establish. Indicate type of monument and sign post found or set.

1964: Plat of Peaceful Shores by James Griffin: 2"x30" iron pipe; 6" oak N20°E, 14.2'

September 21, 1991: I found and accepted a 2-1/4" dia., 28" long iron pipe 30 feet West of Garth Lake. I replaced pipe with a 2-1/2" dia., 30" long aluminum pipe with 3-1/4" dia. Oneida Co. aluminum cap set 5" above the ground and marked as shown. I set a Deep-1 magnet at the base of monument. I found the following witnesses: (Griffin) set nail in oak 8" N22°E, 14.24 feet. I established the following witnesses: set aluminum monument (section cor.) N84°06.0'W, 68.49 feet; set aluminum monument (witness corner to MC) S62°13.5'W, 78.35 feet; set nail in unblazed oak 6" S47°E, 6.49 feet; set plastic sign post Southeast, 2 feet.

(c)(d)(e) Plan view of corner with ties to at least 4 witness monuments. If in disagreement with previously established corner, show the distances between the two corners and also indicate the ties to the disputed.

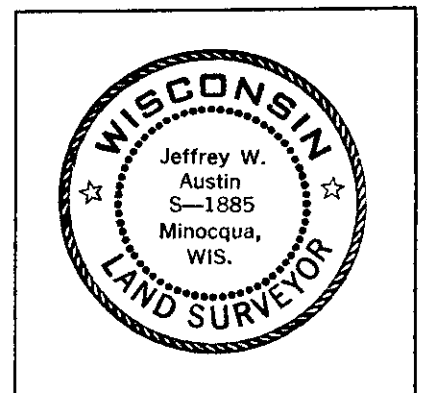


1. nail in oak 8" N22°E, 14.24 feet
  2. section corner aluminum monument N84°06.0'W, 68.49 feet
  3. witness corner aluminum monument S62°13.5'W, 78.35 feet
  4. nail in oak 6" S47°E, 6.49 feet
- not to scale

(i) I, Jeffrey W. Austin, Reg. Land Surveyor hereby certify that the corner location on this record was determined by me or under my direction and control and that this U.S. Public Land Survey Monument Record is correct and complete to the best of my knowledge and belief.

Signature

10-28-1991  
 Date



INDEX NO. R-9.10

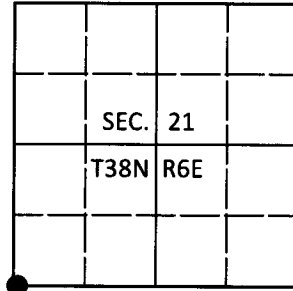
3806210039

# U.S. PUBLIC LAND SURVEY MONUMENT RECORD

Note: This form is intended and designed to fulfill all requirements of Wisconsin Administrative Code, Chapter A-E 7.08 U.S. Public Land Survey Monument Record (3)(a-i).

(a) CORNER LOCATION  
 Meander Cor. of Secs. 21 & 28  
 Township 38 North  
 Range 6 East of the 4th P.M.  
 Town of Hazelhurst  
 County of Oneida

WISCRS - Oneida County  
 N: 209,816.95 USft  
 E: 176,123.06 USft  
 Datum: NAD 83(2011)  
 GNSS Method: RTN - Offset  
 GNSS Control: WISCORS VRS



(b) HISTORY OF ORIGINAL CORNER ESTABLISHMENT

Original Surveyor: \_\_\_\_\_ Original Accessories: \_\_\_\_\_  
 Date of Survey Commenced: \_\_\_\_\_ See previous USPLS Monument Record  
 Completed: \_\_\_\_\_

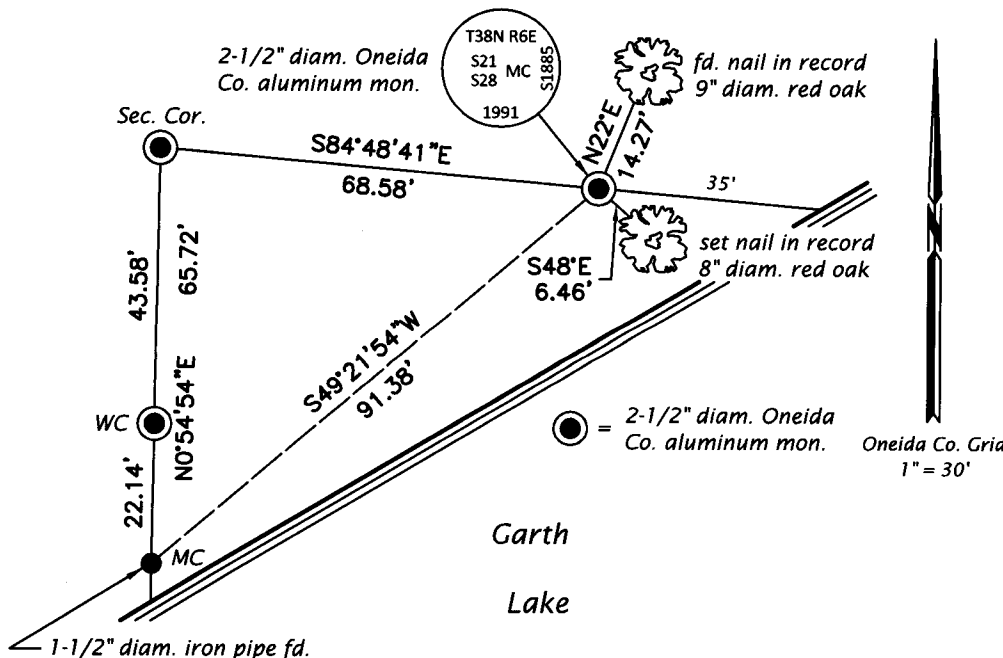
(b)(f)(g)(h) Description of monument found at this corner and if it was accepted, state all evidence (material, testimonial, occupational, plats, records, other monuments) used as a basis for accepting. If not accepted or if nothing was found, state evidence used as basis for establishing location. If re-established through lost corner proportionate methods, indicate all monuments, distances and directions used to establish. Indicate type of monument and sign post found or set.

*This is a perpetuation of a previous USPLS Monument Record by Jeffrey W. Austin, RLS dated October 28, 1991 and filed in the office of the Oneida County Register of Deeds. A complete history of the corner can be found on the previous monument record. I accept the previous location as a true and faithful perpetuation or reestablishment of the original corner location and further perpetuate it as follows.*

*April 8, 2018: I found and accepted the record monument, a 2-1/2" diam. aluminum pipe with a 3-1/4" diam. Oneida Co. aluminum cap projecting 3" above the ground surface. I found or established accessories as shown below. I found a white vinyl sign post bearing Southeast, 1.7 ft.*

*The coordinate value shown has been verified by at least one of the following methods: 1) comparison to a previously GPS determined published value; 2) the value is the average of two or more GPS observations at a markedly different time; 3) one or more distances were measured back to the GPS observed corner from temporary GPS observed offset locations.*

(c)(d)(e) Plan view of corner with ties to at least 4 witness monuments. If in disagreement with previously established corner, show the distances between the two corners and also indicate the ties to the disputed.

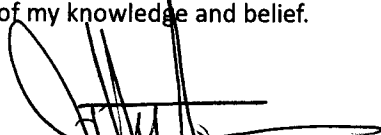


REGISTER OF DEEDS OFFICE  
 ONEIDA COUNTY  
 FILED

MAY 01 2018

KYLE J. FRANSON  
 REGISTER OF DEEDS

(i) I, Jeffrey W. Austin, Professional Land Surveyor No. S-1885, hereby certify that the corner location on this record was determined by me or under my direction and control and that this U.S. Public Land Survey Monument Record is correct and complete to the best of my knowledge and belief.

  
 \_\_\_\_\_  
 Signature

APR. 23, 2018  
 \_\_\_\_\_  
 Date