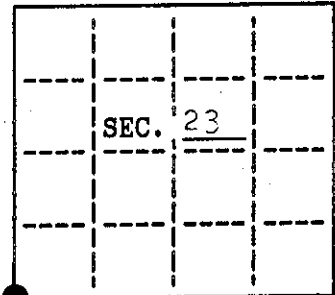


U. S. PUBLIC LAND SURVEY MONUMENT RECORD

Note: This form is intended and designed to fulfill all requirements of Wisconsin Administrative Code, Chapter A-B 7.08 U.S. Public Land Survey Monument Record (3)(a)(b)(c)(d)(e)(f)(g)(h)(i). An additional sheet may be added if necessary to conform with said requirements.

(a) CORNER LOCATION: State Plane Coordinates
SW corner of Sec. 23 X
Township 38 North Y
Range 6 East Datum Base
Town/City Hazelhurst County of Oneida



(b) HISTORY OF ORIGINAL CORNER ESTABLISHMENT
Original Surveyor: Alexander Anderson
Date of Survey: Commenced Sept. 1863
Completed Oct. 1863

Original B.T.'S
birch 8 N34°W, 8 lks.
w.pine 8 N35°E, 16 lks.

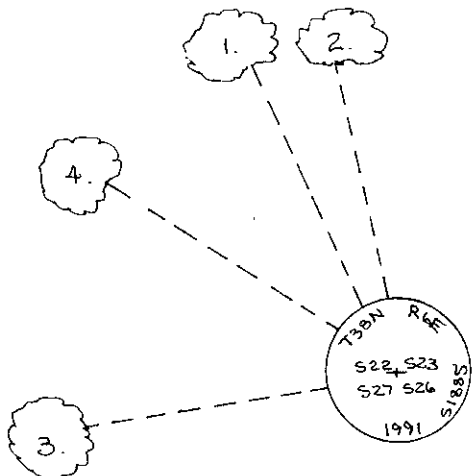
(b)(f)(g)(h) Description of monument found at this corner and if it was accepted, state all evidence (material, testimonial, occupational, plats, records, other monuments) used as a basis for accepting. If not accepted or if nothing was found, state evidence used as basis for establishing location. If reestablished through lost corner proportionate methods, indicate all monuments, distances and directions used to establish. Indicate type of monument and sign post found or set.

February, 1973: Oneida Co. map no. B-737 by John Fisher; iron pipe; 8" tamarack N64°W, 31.3', spike in 18" w.pine N26°W, 109.8'.

August 17, 1977: Oneida Co. map no. I-123 by John Margitan: 2" iron pipe & wood post; 12" spruce N20°W, 73.0', 18" w.pine N26°W, 110.4'.

September 14, 1991: I found and accepted a 2-1/4" dia., 30" long iron pipe. I replaced pipe with a 1" dia., 72" long aluminum pipe with a 2-1/2" dia. Oneida Co. aluminum cap set 10" above ground and marked as shown. I found the following witnesses: (Fisher) dead tamarack 13" N61°W, 31.8 feet; (Fisher) spike in w.pine 22" N24°W, 109.60 feet; set nail in spruce 11" N12°W, 62.05 feet. I established the following witnesses: nail in b.spruce 5" S81°W, 44.92 feet; nail in b.spruce 6" N57°W, 72.65 feet; set plastic sign post Northeast, 1-1/2 feet.

(c)(d)(e) Plan view of corner with ties to at least 4 witness monuments. If in disagreement with previously established corner, show the distances between the two corners and also indicate the ties to the disputed.

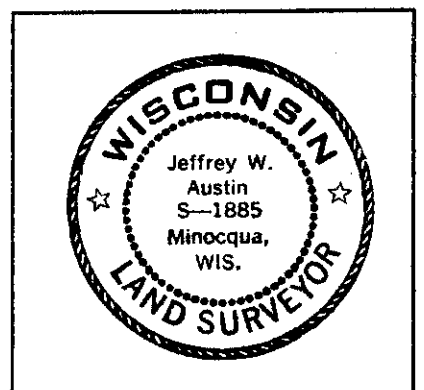


- 1. spike in w.pine 22" N24°W, 109.60 feet
2. nail in spruce 11" N12°W, 62.05 feet
3. nail in b.spruce 5" S81°W, 44.92 feet
4. nail in b.spruce 6" N57°W, 72.65 feet
not to scale

(i) I, Jeffrey W. Austin, Reg. Land Surveyor hereby certify that the corner location on this record was determined by me or under my direction and control and that this U.S. Public Land Survey Monument Record is correct and complete to the best of my knowledge and belief.

Signature [Handwritten Signature]

10-28-1991 Date



INDEX NO. R-17

3806220000

U.S. PUBLIC LAND SURVEY MONUMENT RECORD ADDENDUM

Note: This form is intended and designed to fulfill all requirements of the Wisconsin Administrative Code, Chapter A-E 7.08 U.S. Public Land Monument Record (3)(a)(b)(c)(d)(e)(f)(g)(h)(i). An additional sheet may be added if necessary to conform with said requirements.

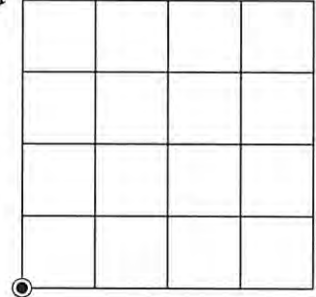
(a) CORNER LOCATION:

Southwest Corner of Section 23
Township 38 North
Range 6 East
Town of Hazelhurst
County of Oneida

North:
East:
Datum:
GNSS Method:
GNSS Control:

(RECORDING AREA)

SECTION 23



(b) HISTORY OF ORIGINAL CORNER ESTABLISHMENT

Original Surveyor:
Date of Survey: Commenced
Completed
Original B.T.'S

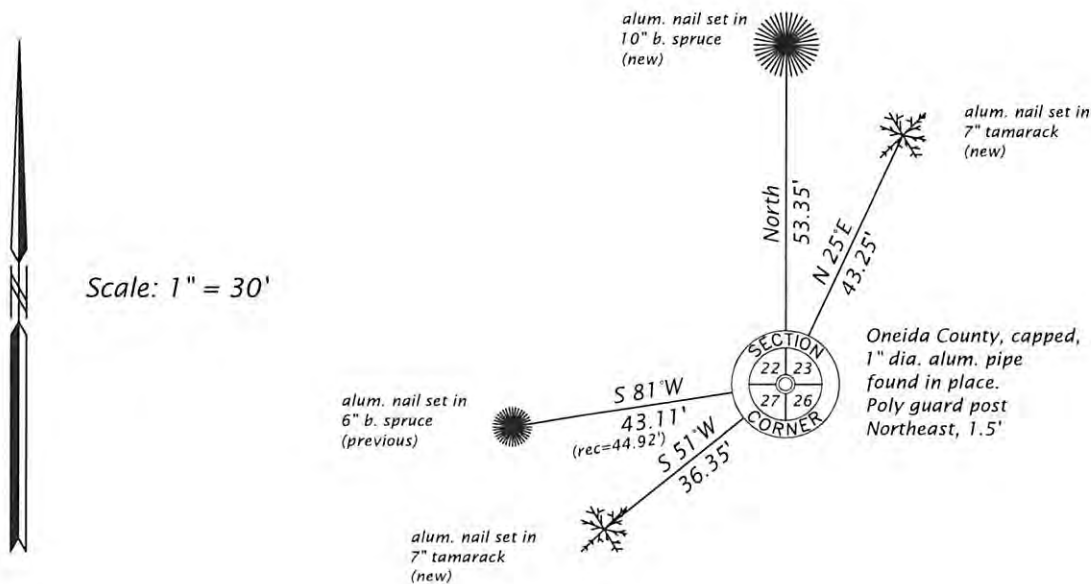
SEE PREVIOUS U.S.P.L.S. MONUMENT RECORD DATED OCTOBER 28, 1991

(f)(g)(h) DESCRIPTION OF MONUMENT FOUND AT THIS CORNER AND IF IT WAS ACCEPTED, STATE ALL EVIDENCE (MATERIAL, TESTIMONIAL, OCCUPATIONAL, PLATS, RECORD, OTHER MONUMENTS) USED AS A BASIS FOR ESTABLISHING LOCATION. IF NOT ACCEPTED OR IF NOTHING WAS FOUND, STATE EVIDENCE USED AS BASIS FOR ESTABLISHING LOCATION. IF REESTABLISHED THROUGH LOST CORNER PROPORTIONATE METHODS, INDICATE ALL MONUMENTS, DISTANCES AND DIRECTIONS USED TO ESTABLISH. INDICATE TYPE OF MONUMENT AND SIGN POST FOUND OR SET.

This is a perpetuation of a previous U.S.P.L.S. Monument Record by Jeffrey W. Austin, RLS-1885, dated October 28, 1991, and filed in the office of the Oneida County Register of Deeds. A complete history of the corner can be found on the previous monument record. I accept the previous location as a true and faithful perpetuation or reestablishment of the original corner location and further perpetuate it as follows.

March 28, 2025, James D. Rein, PLS No. S-1234, we found and I accepted the Oneida County, capped, 1.0" dia. aluminum pipe. We further perpetuate it as shown in the plan. The northwesterly spruces and tamarack and are now dead, or stumps. See below for 3 additional bearing trees and updated ties to the recovered references.

(c)(d)(e) PLAN VIEW OF CORNER WITH TIES TO AT LEAST 4 WITNESS MONUMENTS. IF IN DISAGREEMENT WITH PREVIOUSLY ESTABLISHED CORNER, SHOW THE DISTANCE BETWEEN THE TWO CORNERS AND ALSO INDICATE THE TIES TO THE DISPUTED CORNER.



(i) I, JAMES D. REIN, PROFESSIONAL LAND SURVEYOR NO. S-1234 HEREBY CERTIFY THAT THE CORNER LOCATION ON THIS RECORD WAS DETERMINED BY ME OR UNDER MY DIRECTION AND CONTROL AND THAT THIS U.S. PUBLIC LAND SURVEY MONUMENT RECORD IS CORRECT AND COMPLETE TO THE BEST OF MY KNOWLEDGE AND BELIEF.



James D. Rein
SIGNATURE

4/07/25
DATE

INDEX NO. R - 17
3806220000