

# U.S. PUBLIC LAND SURVEY MONUMENT RECORD

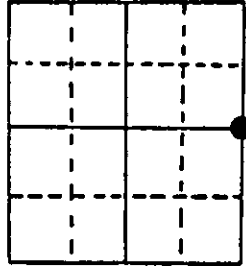
Note: This form is intended and designed to fulfill all requirements of Wisconsin Administrative Code, Chapter A-E 7.08 U.S. Public Land Survey Monument Record (3) (a) (b) (c) (d) (e) (f) (g) (h) (i). An additional sheet may be added if necessary to conform with said requirements.

(a) Corner location: Township 38 North

Range 6 East/West

Town/City/Village HAZELHURST

County ONEIDA



Section 22

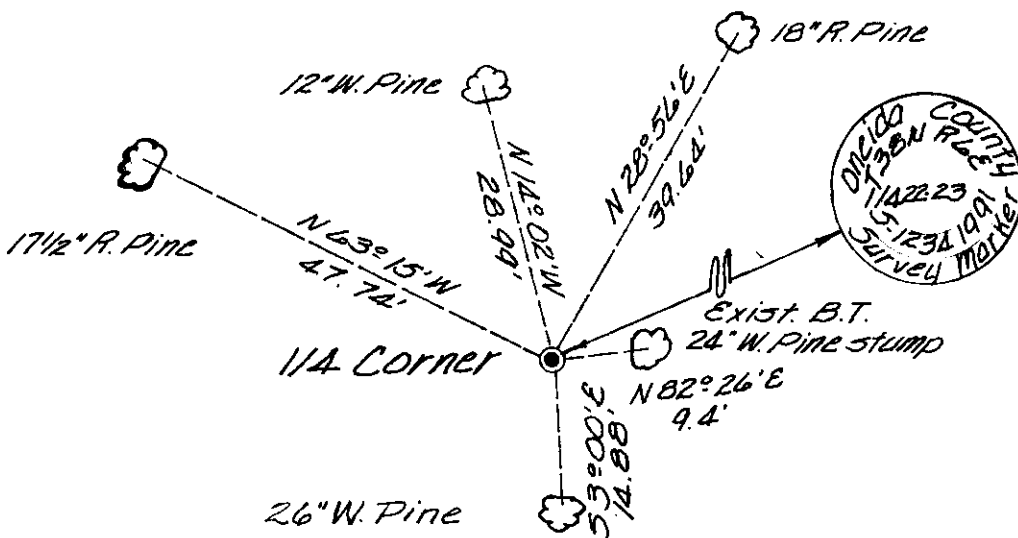
(b) (f) (g) (h) Description of monument found at this corner and if it was accepted, state all evidence (material, testimonial, occupational, plats, records, other monuments) used as a basis for accepting. If not accepted or if nothing was found, state evidence used as basis for establishing location. If reestablished through lost corner proportionate methods, indicate all monuments, distances and directions used to establish. Indicate type of monument found or set and sign post.

Sept. 1863 - Alexander Anderson, Deputy Surveyor, set Quarter Section post for corner monument. Original bearing trees: 9" W. Pine bearing N39°W, 17 links  
9" W. Pine bearing N10°E, 12 links

May 29th, 1948 - E. F. Kowalke, Reg. Land Surveyor, was unable to recover any evidence of original corner. He set cedar stake for Quarter Corner at mid distance between North and South Section Corners. Referenced the corner with two bearing trees: 13" W. Pine bearing S5°E, 14.1'; 10" W. Pine bearing N77°E, 9.0'.

Oct. 8th, 1991 - James D. Rein, Reg. Land Surveyor, recovered a 2" dia. iron pipe and Kowalke's old post witnessed by a 24" W. Pine stump bearing N82°26'E, 9.4 feet. Replaced the 2" dia. iron pipe with a capped 2" dia. aluminum monument. Made new bearing tree ties as shown in plan view.

(c) (d) (e) Plan view of corner with ties to at least 4 witness monuments. If in disagreement with previously established corner, show the distances between the two corners and also indicate the ties to the disputed corner.



(i) I, James D. Rein, Registered Land Surveyor No. 1234  
(type or print name) certify that the corner location on this record was determined by me or under my direction and control and that this U.S. Public Land Survey Monument Record is correct and complete to the best of my knowledge and belief.

James D. Rein Signature October 15th, 1991 Date

3806222000  
Stamp

Index No. P-17