

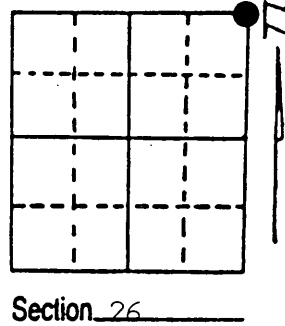
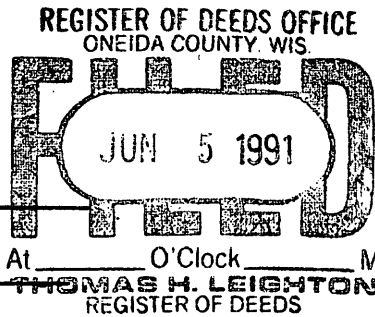
# U.S. PUBLIC LAND SURVEY MONUMENT RECORD

**Note:** This form is intended and designed to fulfill all requirements of Wisconsin Administrative Code, Chapter A-E 7.08 U.S. Public Land Survey Monument Record (3) (a) (b) (c) (d) (e) (f) (g) (h) (i). An additional sheet may be added if necessary to conform with said requirements.

(a) Corner location: Township 38 North  
 Range 6 East ~~West~~

Town/City/Village Hazelhurst

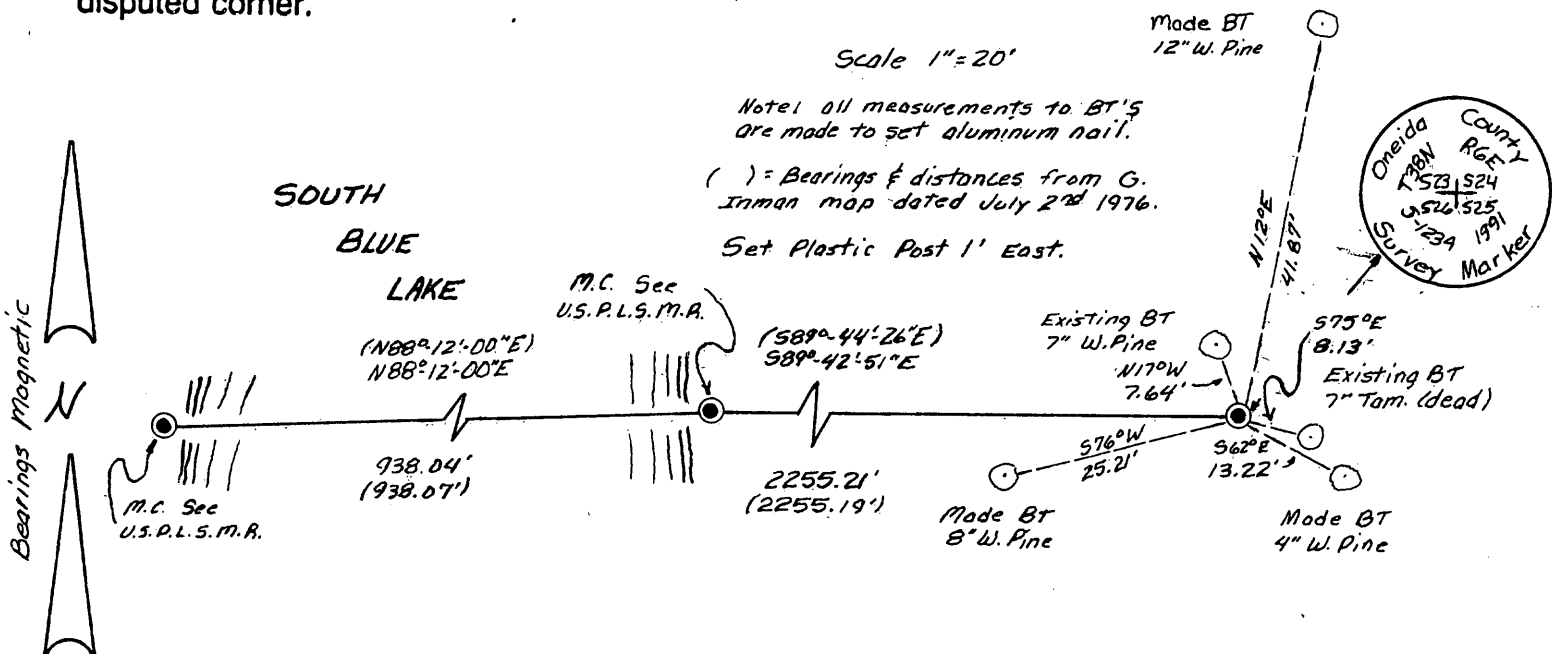
County Oneida



(b) (f) (g) (h) Description of monument found at this corner and if it was accepted, state all evidence (material, testimonial, occupational, plats, records, other monuments) used as a basis for accepting. If not accepted or if nothing was found, state evidence used as basis for establishing location. If reestablished through lost corner proportionate methods, indicate all monuments, distances and directions used to establish. Indicate type of monument found or set and sign post.

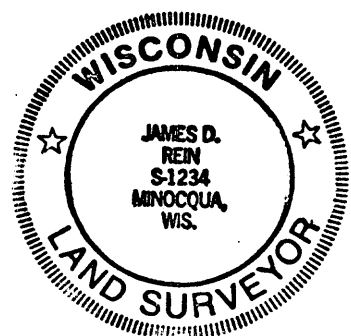
Sept. 1863; Alexander Anderson (Deputy Surveyor) set post for corner to section 23, 24, 25, & 26. Bearing Trees: Spruce 6" N76°-30'W 25 Lks, Spruce 6" S40°-30'W 30 Lks.  
 July 1976; Gerald B. Inman (RLS) on map dated July 2nd, 1976 shows a 1 1/4" iron rod set to replace wood post.  
 May 1991; James D. Rein found old wood post (but no evidence of iron rod). Set iron rod and Oneida County aluminum tablet to replace the wood post. Existing BT's: 7" W. Pine N17°W 7.64' and 7" Tamarack (dead) S75°E 8.13'. See sketch below for additional information.

(c) (d) (e) Plan view of corner with ties to at least 4 witness monuments. If in disagreement with previously established corner, show the distances between the two corners and also indicate the ties to the disputed corner.



(i) I, James D. Rein RLS-1234  
 (type or print name) certify that the corner location on this record was determined by me or under my direction and control and that this U.S. Public Land Survey Monument Record is correct and complete to the best of my knowledge and belief.

James D. Rein Signature 6/01/91 Date



3806230000 Stamp