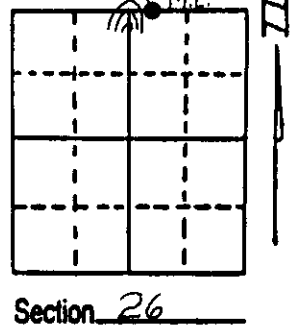


# U.S. PUBLIC LAND SURVEY MONUMENT RECORD

**Note:** This form is intended and designed to fulfill all requirements of Wisconsin Administrative Code, Chapter A-E 7.08 U.S. Public Land Survey Monument Record (3) (a) (b) (c) (d) (e) (f) (g) (h) (i). An additional sheet may be added if necessary to conform with said requirements.

(a) Corner location: Township 38 North  
 Range 6 East/West  
 Town/City/Village Hazelhurst  
 County Oneida

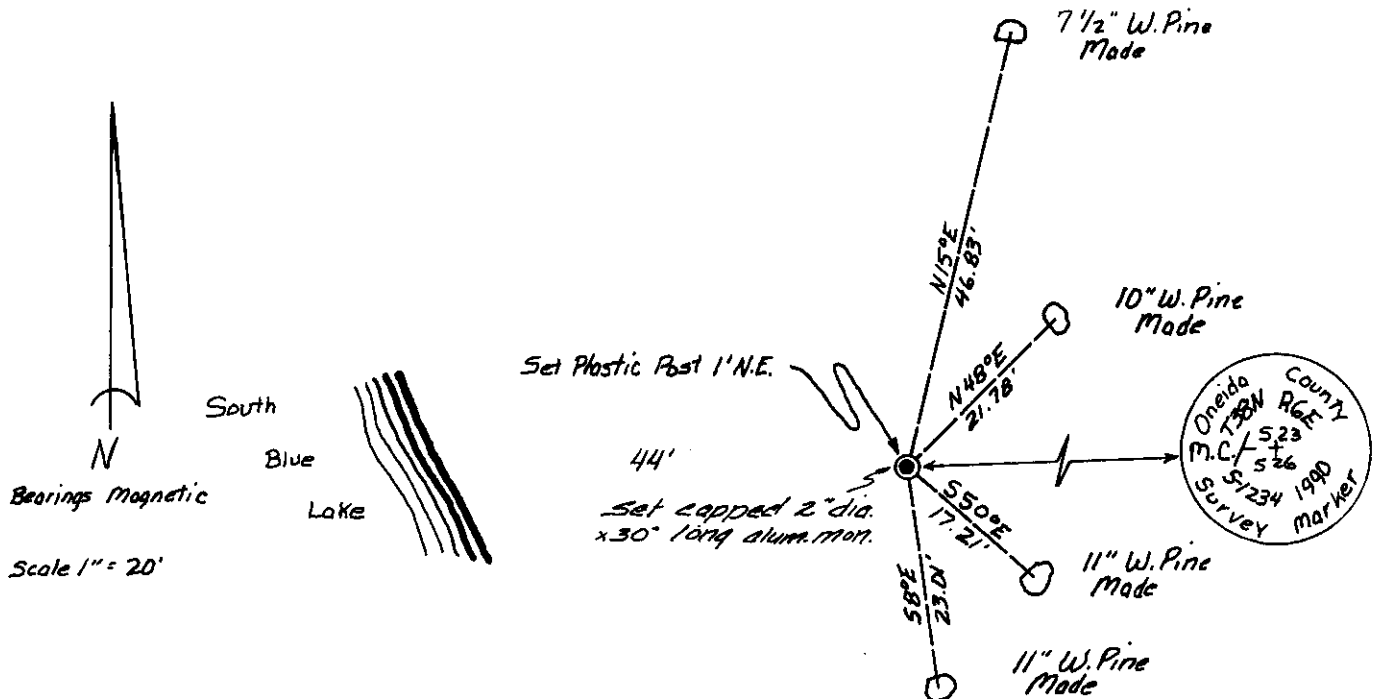
REGISTER OF DEEDS OFFICE  
 ONEIDA COUNTY, WIS  
**FILED**  
 FEB 18 1991  
 At \_\_\_\_\_ O'Clock \_\_\_\_\_ M  
**THOMAS H. LEIGHTON**  
 REGISTER OF DEEDS



(b) (f) (g) (h) Description of monument found at this corner and if it was accepted, state all evidence (material, testimonial, occupational, plats, records, other monuments) used as a basis for accepting. If not accepted or if nothing was found, state evidence used as basis for establishing location. If reestablished through lost corner proportionate methods, indicate all monuments, distances and directions used to establish. Indicate type of monument found or set and sign post.

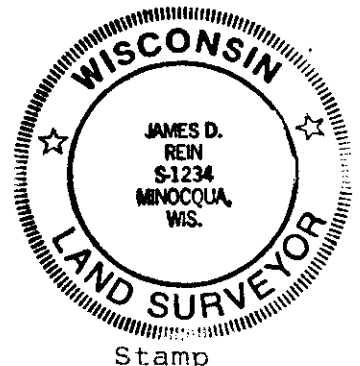
Sept. 1863; Alexander Anderson (Deputy Surveyor) set Meander Post. Bearing Trees: Birch 8" N62 1/2°E 11 Links, Tamarack 10" S39°E 75 Links.  
 July 1976; Gerald Boyd Inman shows on map that the Meander Corner is monumented by a 1 1/4" I.P.  
 Dec. 1990; James D. Rein found a 1 1/4" I.P. and set an Oneida County Aluminum Monument over the 1 1/4" I.P.

(c) (d) (e) Plan view of corner with ties to at least 4 witness monuments. If in disagreement with previously established corner, show the distances between the two corners and also indicate the ties to the disputed corner.



(i) I, James D. Rein, RLS No. 1234  
 (type or print name) certify that the corner location on this record was determined by me or under my direction and control and that this U.S. Public Land Survey Monument Record is correct and complete to the best of my knowledge and belief.

James D. Rein December 28th, 1990  
 Signature Date



Index No. R-19-20  
 3806230017