

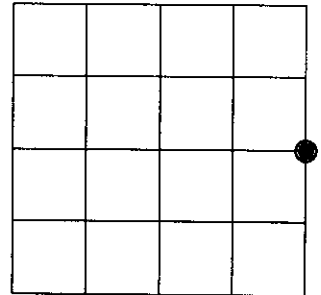
# U.S. PUBLIC LAND SURVEY MONUMENT RECORD

Note: This form is intended and designed to fulfill all requirements of Wisconsin Administrative Code, Chapter A-E 7.08 U.S. Public Land Survey Monument Record (3)(a)(b)(c)(d)(e)(f)(g)(h)(i). An additional sheet may be added if necessary to conform with said requirements.

**(a) CORNER LOCATION:**

East 1/4 corner of Sec. 23  
 Township 38 North  
 Range 6 East  
 Town/City/Village Hazelhurst  
 County of Oneida

State Plane Coordinates  
 X \_\_\_\_\_  
 Y \_\_\_\_\_  
 Datum Base \_\_\_\_\_



**(b) HISTORY OF ORIGINAL CORNER ESTABLISHMENT**

Original Surveyor: Alexander Anderson, Dep. Sur. Original B.T.'S SECTION 23  
 Date of Survey: Commenced Sept. 28th, 1863 Y. Pine 18" S15°W, 9 lks.  
 Completed Oct. 5th, 1863 W. Pine 10" N48°E, 24 lks.

**(f)(g)(h)** Description of monument found at this corner and if it was accepted, state all evidence (material, testimonial, occupational, plats, records, other monuments) used as a basis for establishing location. If not accepted or if nothing was found, state evidence used as basis for establishing location. If reestablished through lost corner proportionate methods, indicate all monuments, distances and directions used to establish. Indicate type of monument and sign post found or set.

December, 1966 – William S. Cameron, Licensed Surveyor – Map identifies corner monumented by iron pipe; referenced by a 6" Spruce S57°W, 27.5 feet and a 10" N. Pine S68°E, 25.0 feet.

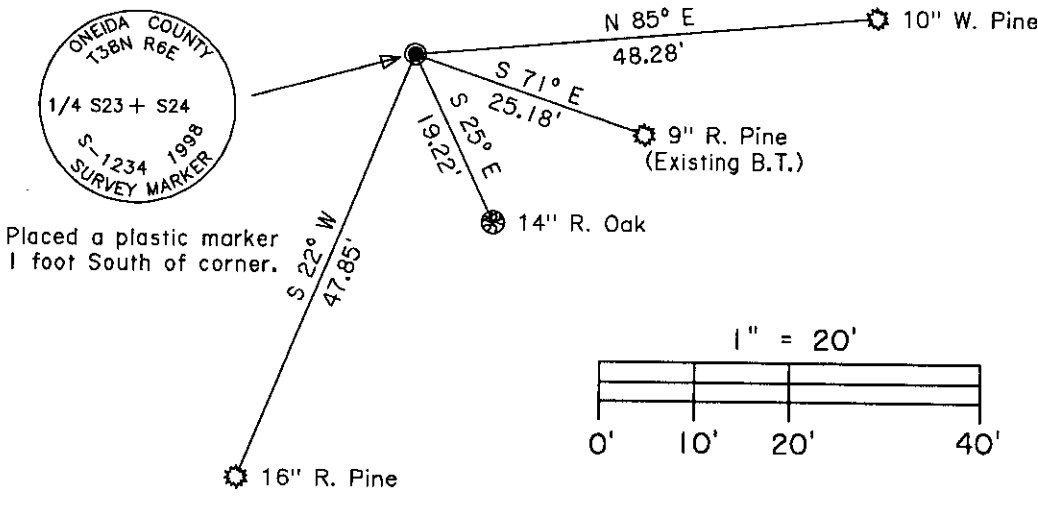
June 9th, 1981 – James F. Kasson, Surveyor No. 1416 – Map identifies corner monumented by 1" dia. iron pipe with elbow found in place. Referenced by an 8" Norway Pine S73°E, 25.0 feet and an 8" W. Birch N01°E, 31.90 feet.

October 8th, 1998 – James D. Rein, Surveyor No. 1234 – Recovered 3/4" inside dia. iron pipe with elbow, referenced by a 9" Red Pine bearing S71°E, 25.18 feet. Placed a capped 2" dia. x 30" long flange bottom aluminum monument over the iron pipe and made new reference ties as shown in plan.

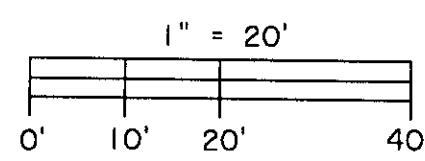
**(c)(d)(e)** Plan view of corner with ties to at least 4 witness monuments. If in disagreement with previously established corner, show the distance between the two corners and also indicate the ties to the disputed corner.

Set a 2" dia. x 30" long flange bottom aluminum monument over a 3/4" dia. iron pipe found in place.

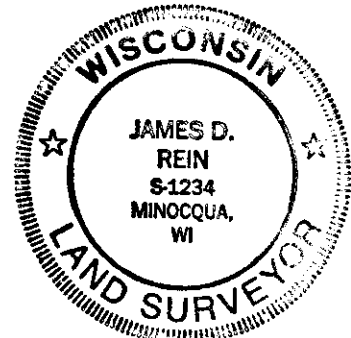
NOTE: Distance measurements made to aluminum nails set in center of root crown on side of B.T. facing corner.



BEARINGS ARE MAGNETIC



(i) I, James D. Rein, Registered Land Surveyor No. 1234, hereby certify that the corner location on this record was determined by me or under my direction and control and that this U.S. Public Land Survey Monument Record is correct and complete to the best of my knowledge and belief.



INDEX NO. P 21  
3806237000

*James D. Rein*  
 Signature

September 29th, 1998

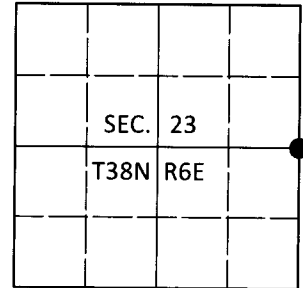
Date

# U.S. PUBLIC LAND SURVEY MONUMENT RECORD

Note: This form is intended and designed to fulfill all requirements of Wisconsin Administrative Code, Chapter A-E 7.08 U.S. Public Land Survey Monument Record (3)(a-i).

(a) CORNER LOCATION  
 1/4 Cor. of Secs. 23 & 24  
 Township 38 North  
 Range 6 East of the 4th P.M.  
 Town of Hazelhurst  
 County of Oneida

WISCRS - Oneida County  
 N: 212,485.09 USft  
 E: 191,872.39 USft  
 Datum: NAD 83(2011)  
 GNSS Method: RTN - Offset  
 GNSS Control: WISCORS VRS



(b) HISTORY OF ORIGINAL CORNER ESTABLISHMENT

Original Surveyor:

Original Accessories:

Date of Survey Commenced:  
 Completed:

See previous USPLS Monument Record

(b)(f)(g)(h) Description of monument found at this corner and if it was accepted, state all evidence (material, testimonial, occupational, plats, records, other monuments) used as a basis for accepting. If not accepted or if nothing was found, state evidence used as basis for establishing location. If re-established through lost corner proportionate methods, indicate all monuments, distances and directions used to establish. Indicate type of monument and sign post found or set.

*This is a perpetuation of a previous USPLS Monument Record by James D. Rein, RLS dated Sep. 29, 1998 and filed in the office of the Oneida County Register of Deeds. A complete history of the corner can be found on the previous monument record. I accept the previous location as a true and faithful perpetuation or reestablishment of the original corner location and further perpetuate it as follows.*

*Dec. 21, 2018: I found and accepted the record monument, a 2-1/2" diam. aluminum pipe with a 3-1/4" diam. Oneida Co. aluminum cap projecting 4" above the ground surface. I found or established accessories as shown below. I found a white vinyl sign post bearing South, 1.3 ft.*

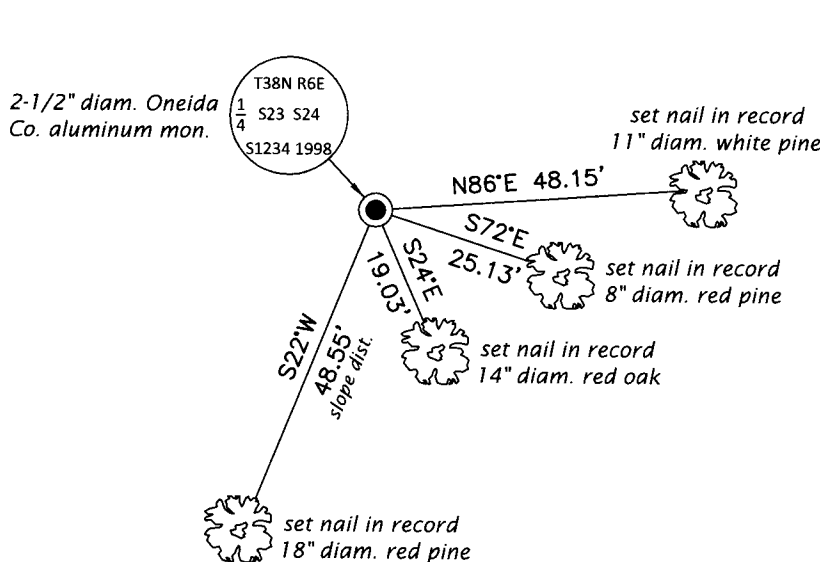
*The coordinate value shown has been verified by at least one of the following methods: 1) comparison to a previously GPS determined published value; 2) the value is the average of two or more GPS observations at a markedly different time; 3) one or more distances were measured back to the GPS observed corner from temporary GPS observed offset locations.*

REGISTER OF DEEDS OFFICE  
 ONEIDA COUNTY  
 FILED

DEC 31 2018

KYLE J. FRANSON  
 REGISTER OF DEEDS

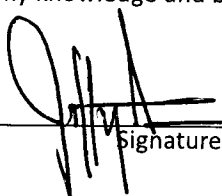
(c)(d)(e) Plan view of corner with ties to at least 4 witness monuments. If in disagreement with previously established corner, show the distances between the two corners and also indicate the ties to the disputed.



Magnetic  
 1" = 30'



(i) I, Jeffrey W. Austin, Professional Land Surveyor No. S-1885, hereby certify that the corner location on this record was determined by me or under my direction and control and that this U.S. Public Land Survey Monument Record is correct and complete to the best of my knowledge and belief.

  
 Signature

24 DEC 2018  
 Date