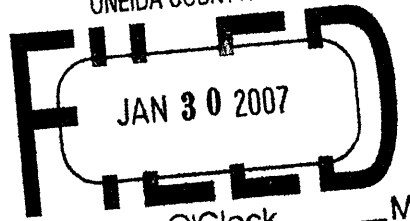


This form is intended to fulfill the requirements of Chapter A-E7.08 (3)(a) thru (i) U.S. Public Land Survey Monument Location Record, Wisconsin Administrative Code. Use the reverse side of form for continuation.

REGISTER OF DEEDS OFFICE
ONEIDA COUNTY, WIS.



At _____ O'Clock _____ M
THOMAS H. LEIGHTON
REGISTER OF DEEDS
Recorders Data

U.S. PUBLIC LAND SURVEY MONUMENT LOCATION RECORD

USPLS CORNER: NORTH WITNESS MC SECTION: 24 TOWNSHIP: 38 NORTH RANGE: 6 EAST

NAME OF WATERWAY FOR M.C. CORNER: HARR LAKE SECTION LINE: WEST

(CITY)(VILLAGE)(TOWN) OF: HAZELHURST COUNTY OF: ONEIDA

Description of monument found or placed and all other evidence used as the basis for monument location; including monuments and measurements required if the corner location was reestablished by lost corner proportionate methods. Also indicate name of the original surveyor, original survey date and the corner monument, bearing trees, witness or other reference monuments established, including measured bearing and distance ties, from available survey records.

In October 1863, Alexander Anderson/GLO set no wood post as original meander corner as he only noted a pond 7.84 chains North of the West 1/4 of Section 24.

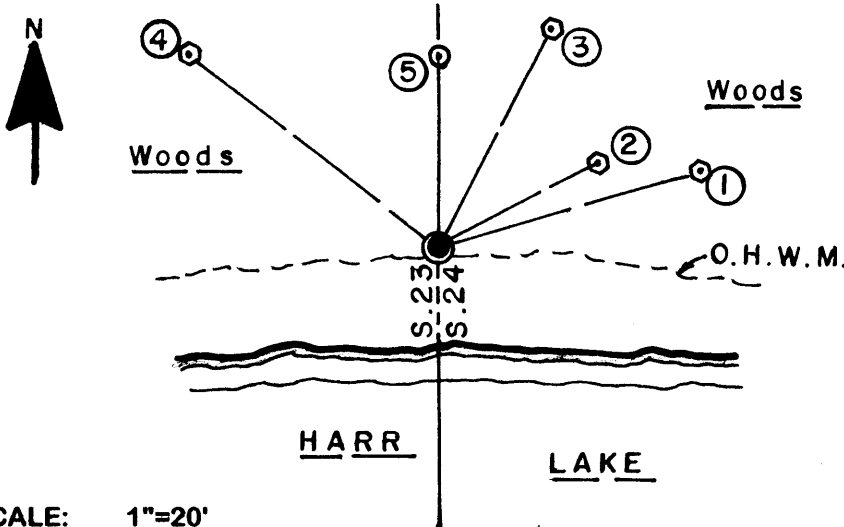
In May of 1976, Stuart L. Foltz/RLS 1170 found and accepted a 1.5" dia. iron pipe at this Witness MC per notation on plat of Birchwood Acres Division II filed in Oneida County records.

In August 2006, I found an older 1.25" dia. galvanized iron pipe with uncapped top 9" above grade and plumb at this Witness MC, which I left in place and drove a standard 2" dia. by 30" long aluminum pipe over the old iron pipe with stamped Oneida County cap to 11" above grade for new witness ties shown below.

Corner falls at the SW corner of improved lake lot at Fire No. 6228 Bernie Lou Drive, 10' North of existing lakeshore bearing East/West and about 1' North of estimated OHWM.

This recovery completed August 10, 2006; there were no direct witnesses.

Plan view map of monument location with bearing and distance ties to a minimum of four(4) described witness or reference monuments of concrete, natural stone, iron, live bearing trees or equivalent material. If applicable, also show a minimum of two(2) bearing and distance ties to any other monument found and not accepted; including the bearing and distance from the accepted monument.



WITNESS MONUMENT TIES:

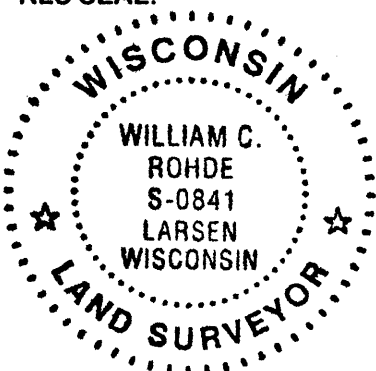
- ① New 9" Or BT N73°E 28.48'.
- ② New 13" Or BT N62°E 18.70'.
- ③ New 5" Sb BT N27°E 25.76'.
- ④ New NE trunk of 16" Or BT N52°W 32.77'.
- ⑤ Found an older 2" dia. iron pipe with uncapped top 5" up North 20.03'.

Standard white poly 'T' marker post set 13" South of corner monument and I flagged monument, T post, all BTs and older 2' iron pipe with orange tape.

SCALE: 1"=20'

Unless otherwise indicated, all bearing tree ties are to a .25" dia. by 2.5" long PK nail with a 1.25" dia. steel washer driven into unblazed right face and a .25" dia. by 2.5" long PK nail with a 2" dia. steel washer stamped BT is also driven into unblazed face of bearing tree at DBH; the basis for measured bearings is by compass to nearest degree and all tie distances are measured horizontal by steel tape corrected to nearest 1/100th feet at standard temperature of 68° F.

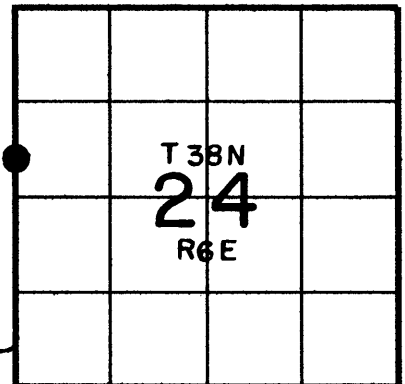
RLS SEAL:



LAND SURVEYOR CERTIFICATE:

I, William C. Rohde, hereby certify that I am duly licensed as a Professional Land Surveyor in the State of Wisconsin; that this USPLS monument location was determined by me and/or under my direct supervision and control; and that this U.S. Public Land Survey Monument Location Record is true and correct to the best of my knowledge and belief.

Signed: *William C. Rohde*
William C. Rohde RLS 841



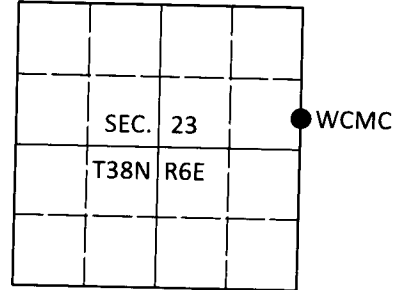
SECTION LOCATION MAP
INDEX NO. O-P 21
380623 2400

U.S. PUBLIC LAND SURVEY MONUMENT RECORD

Note: This form is intended and designed to fulfill all requirements of Wisconsin Administrative Code, Chapter A-E 7.08 U.S. Public Land Survey Monument Record (3)(a-i).

(a) CORNER LOCATION
 Wit. Meander Cor. of Secs. 23 & 24
 Township 38 North
 Range 6 East of the 4th P.M.
 Town of Hazelhurst
 County of Oneida

WISCRS - Oneida County
 N: 213,067.63 USft
 E: 191,870.79 USft
 Datum: NAD 83(2011)
 GNSS Method: RTN - Direct
 GNSS Control: WISCORS VRS



(b) HISTORY OF ORIGINAL CORNER ESTABLISHMENT

Original Surveyor:

Original Accessories:

Date of Survey

Commenced:
 Completed:

See previous USPLS Monument Record

(b)(f)(g)(h) Description of monument found at this corner and if it was accepted, state all evidence (material, testimonial, occupational, plats, records, other monuments) used as a basis for accepting. If not accepted or if nothing was found, state evidence used as basis for establishing location. If re-established through lost corner proportionate methods, indicate all monuments, distances and directions used to establish. Indicate type of monument and sign post found or set.

This is a perpetuation of a previous USPLS Monument Record by William C. Rohde, RLS dated Jan. 20, 2007 and filed in the office of the Oneida County Register of Deeds. A complete history of the corner can be found on the previous monument record. I accept the previous location as a true and faithful perpetuation or reestablishment of the original corner location and further perpetuate it as follows.

Dec. 21, 2018: I found and accepted the record monument, a 2-1/2" diam. aluminum pipe with a 3-1/4" diam. Oneida Co. aluminum cap projecting 10" above the ground surface. The record bearing tree identified as #3 is in decline. I found or established accessories as shown below. I found a white vinyl sign post bearing South, 1.0 ft.

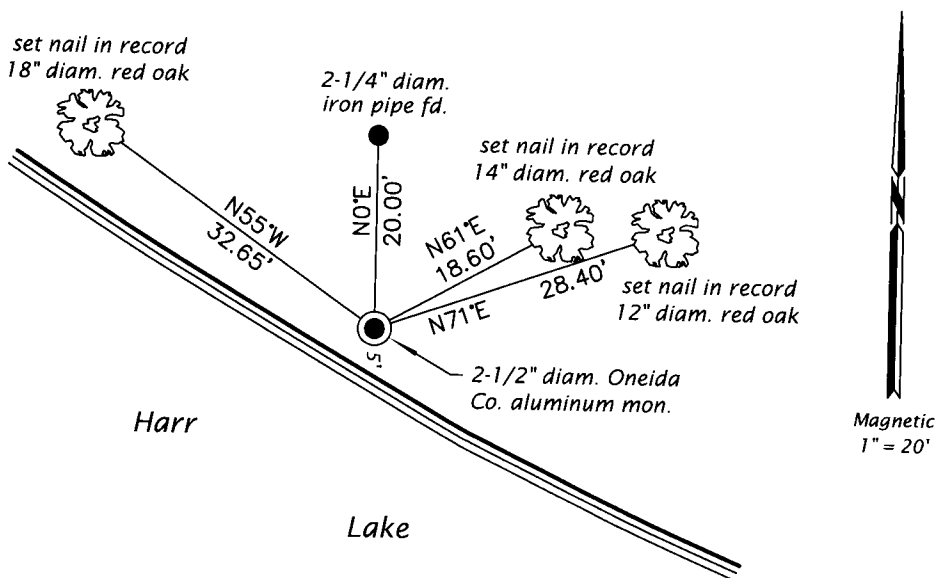
The coordinate value shown has been verified by at least one of the following methods: 1) comparison to a previously GPS determined published value; 2) the value is the average of two or more GPS observations at a markedly different time; 3) one or more distances were measured back to the GPS observed corner from temporary GPS observed offset locations.

REGISTER OF DEEDS OFFICE
 ONEIDA COUNTY
 FILED

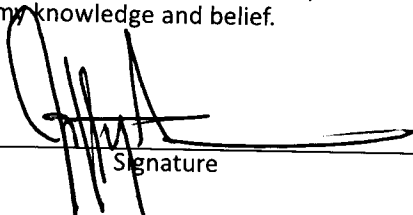
DEC 31 2018

KYLE J. FRANSON
 REGISTER OF DEEDS

(c)(d)(e) Plan view of corner with ties to at least 4 witness monuments. If in disagreement with previously established corner, show the distances between the two corners and also indicate the ties to the disputed.



(i) I, Jeffrey W. Austin, Professional Land Surveyor No. S-1885, hereby certify that the corner location on this record was determined by me or under my direction and control and that this U.S. Public Land Survey Monument Record is correct and complete to the best of my knowledge and belief.


 Signature

21 DEC 2018
 Date