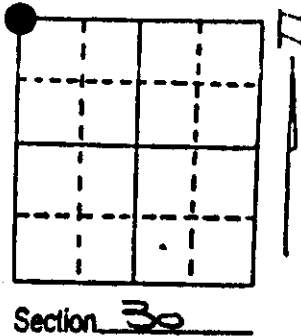


U.S. PUBLIC LAND SURVEY MONUMENT RECORD

Note: This form is intended and designed to fulfill all requirements of Wisconsin Administrative Code, Chapter A-E 7.08 U.S. Public Land Survey Monument Record (3) (a) (b) (c) (d) (e) (f) (g) (h) (i). An additional sheet may be added if necessary to conform with said requirements.

(a) Corner location: Township 38 North
 Range 7 East/West
 Town/City/Village LAKE TOMAHAWK
 County ONEIDA



(b) (f) (g) (h) Description of monument found at this corner and if it was accepted, state all evidence (material, testimonial, occupational, plats, records, other monuments) used as a basis for accepting. If not accepted or if nothing was found, state evidence used as basis for establishing location. If reestablished through lost corner proportionate methods, indicate all monuments, distances and directions used to establish. Indicate type of monument found or set and sign post.

September, 1860: Alfred Millard set a wood post: W.Pine 9" S60E, 13 lks. W.Pine 12" S58W, 16 lks., W.Pine 6" N70W, 22 lks., W.Pine 8" N21E, 24 lks.

March 28, 1938: Vernon Maine notes: "Identified by Ira Smith as location of original government corner. Would be at intersection of town road East and old USH 51.

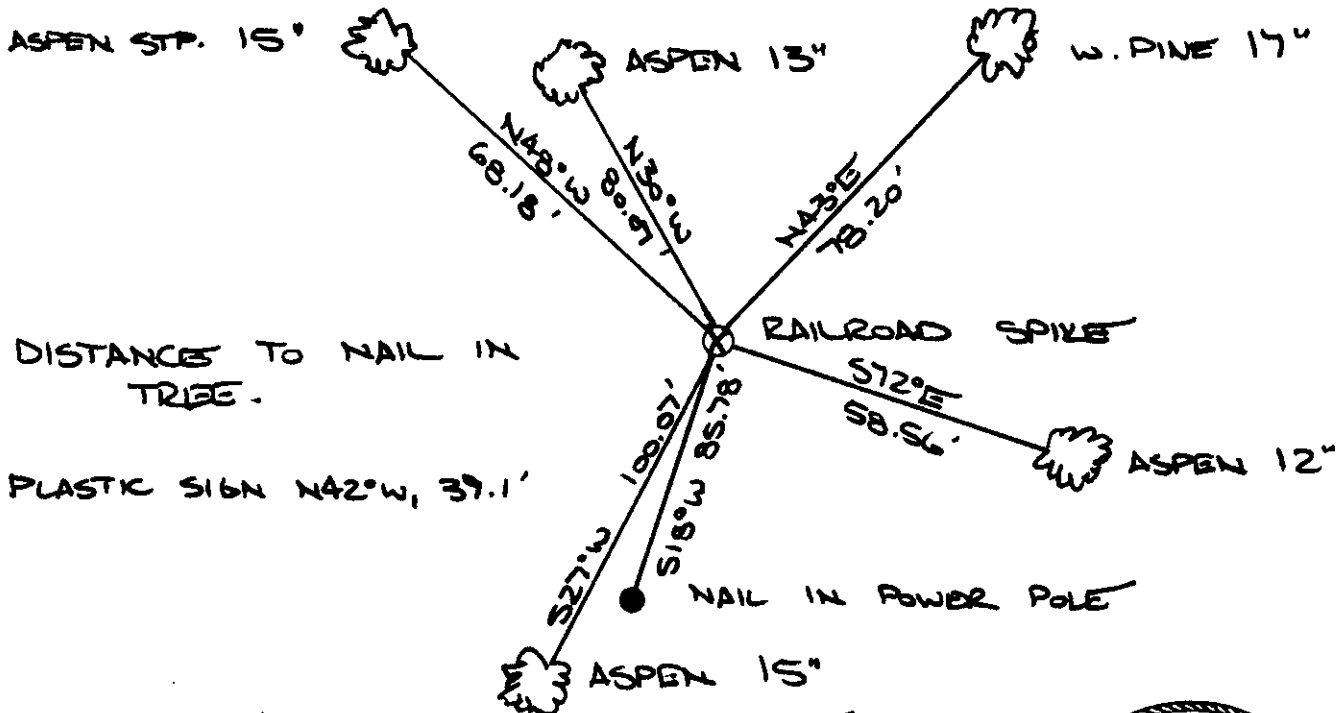
January, 1959: Lloyd Scott map shows corner as "section corner in road."

December, 1974: Gerald Inman map B-836 shows corner as railroad spike.

December 21, 1981: Fred Copp map B-92 shows corner as railroad spike in centerline of Lakewood Road found: PW 16" N45E, 78.23', ASP 12" S69E, 58.35', ASP 14" N42W, 67.57', Power Pole S21W, 85.82'.

August 1, 1989: Jeffrey W. Austin found and accepted a railroad spike in the centerline of Lakewood Rd; : set nail in Aspen 15" S27W, 100.07', found nail in Power Pole S18W, 85.78', found nail in Aspen 15" N48W, 68.18'(stump), found nail in W.Pine 17" N43E, 78.20', found nail in Aspen 12" S72E, 58.56', set nail in Aspen 13" N30W, 80.97', set sign N42W, 39.1'.

(c) (d) (e) Plan View of corner with ties to at least 4 witness monuments. If in disagreement with previously established corner, show the distances between the two corners and also indicate the ties to the disputed corner.



(i) JEFFREY W. AUSTIN S-1885

(type or print name) certify that the corner location on this record was determined by me or under my direction and control and that this U.S. Public Land Survey Monument Record is correct and complete to the best of my knowledge and belief.

Signature

Date

AUGUST 7, 1989



Index No. R-1

3806240000