

CERTIFIED LAND CORNER RESTORATION

State of Wisconsin }
County of Oneida } ss.

I, James F. Kasson, do hereby certify that on the 9th day of June, 1981, I found evidence of the East 1/4 corner of Section 24, Township 38 North, Range 6 East, Fourth Principal Meridian, as described hereon; and that from this evidence I established a new monument and accessories as described hereon to perpetuate the original location of this corner:

Description of original monument and accessories and subsequent restorations:

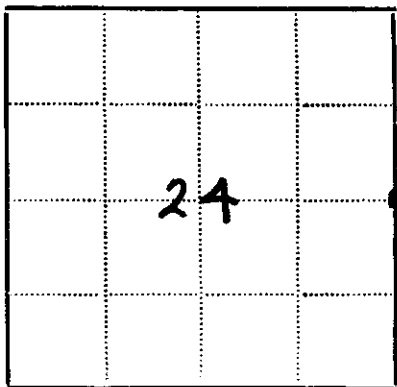
wooden post set bt's:

- 20" White Pine N32W 11 links
- 12" white Pine N38E 23 links

Description of corner evidence found: 1 inch iron pipe, no Bt's.

Description of monument and accessories I established to perpetuate the location of this corner:

- Set Oneida County aluminum monument
- BT's. 10" Poplar, N 50° E, 10.57'
- 6" Red Pine, S 31° W, 14.69'



● - Corner monument restored
 □ -

Resident witnesses _____

Dated at Rhineland Wisconsin, this 7 day of July 1981.

Signature James F. Kasson Title RLS
(County Surveyor, Registered Land Surveyor, or other duly authorized official)

Surveyors Registration No. 1416

Office of Register of Deeds County of Oneida

I hereby certify that the within instrument was filed in this office for record on the 11 day of June 1981, and was filed in Book No. _____ Page No. _____ of County Records.

Signature Doris Verage Title Register of Deeds
Cynthia A. Pitts Deputy

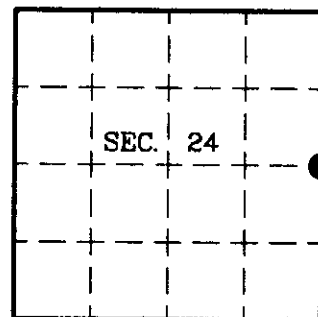
Township 38 N., Range 6 E., Section 24, Index No. _____, Page No. _____

3806242000

U.S. PUBLIC LAND SURVEY MONUMENT RECORD

Note: This form is intended and designed to fulfill all requirements of Wisconsin Administrative Code, Chapter A-E 7.08 U.S. Public Land Survey Monument Record (3)(a)(b)(c)(d)(e)(f)(g)(h)(i). An additional sheet may be added if necessary to conform with said requirements.

(a) CORNER LOCATION: State Plane Coordinates
 East 1/4 Corner of Section 24 X
 Township 38 North Y
 Range 6 East Datum Base
 Town of Hazelhurst County of Oneida



(b) HISTORY OF ORIGINAL CORNER ESTABLISHMENT

Original Surveyor: Alfred Millard
 Date of Survey: Commenced Sept. 1860
 Completed Sept. 1860

Original B.T.s

W. Pine 20 N32°W, 11 links
 W. Pine 12 N38°E, 23 links

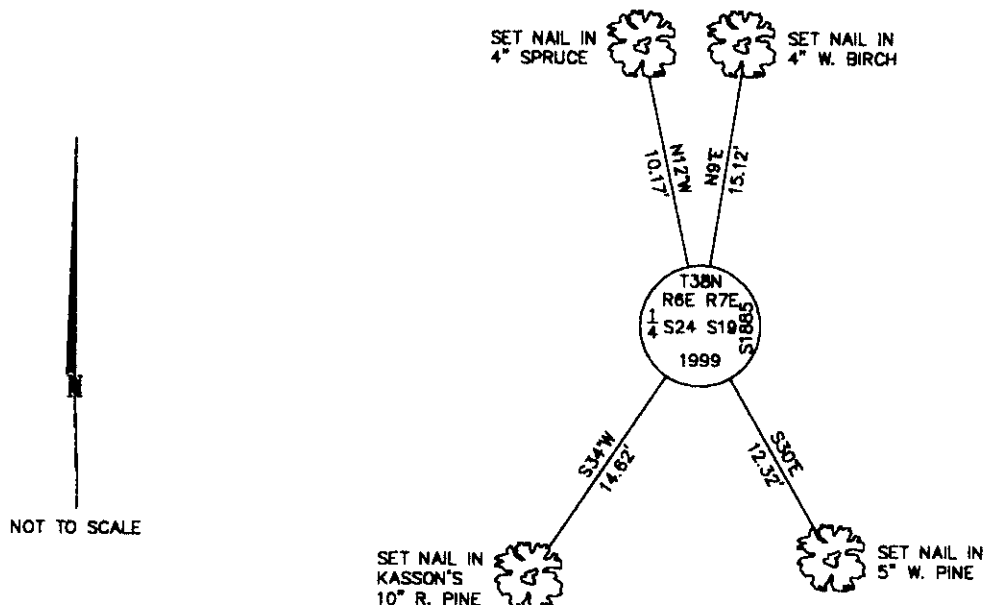
(b)(f)(g)(h) Description of monument found at this corner and if it was accepted, state all evidence (material, testimonial, occupational, plats, records, other monuments) used as a basis for accepting. If not accepted or if nothing was found, state evidence used as basis for establishing location. If reestablished through lost corner proportionate methods, indicate all monuments, distances and directions used to establish. Indicate type of monument and sign post found or set.

Sept. 2, 1980: OCS #C-461 by Stuart Foltz indicates corner is marked by a 1-1/2" iron pipe in old fence line.

July 7, 1981: Worksheet and USPLS Monument Record by James Kasson. Worksheet note: "This corner is not correct. SLF pulled proper corner by accident. Corner should be set 1.29' West." Kasson set an Oneida Co. aluminum monument and noted the following accessories: 10' Poplar N50°E, 10.57'; 6' Red Pine S31°W, 14.69'.

September 7, 1999: I found and accepted a 2" dia. hole in the ground witnessed by Kasson's accessories including an Aspen stump 10' N50°E, 10.9 feet. I set a 2-1/2" dia., 30" long aluminum pipe with 3-1/4" dia. Oneida Co. aluminum cap 8" above the ground and marked as shown below. I established accessories as shown below and set a plastic sign post Northeast, 1-1/2 feet.

(c)(d)(e) Plan view of corner with ties to at least 4 witness monuments. If in disagreement with previously established corner, show the distances between the two corners and also indicate the ties to the disputed.



(i) I, Jeffrey W. Austin, Registered Land Surveyor S-1885, hereby certify that the corner location on this record was determined by me or under my direction and control and that this U.S. Public Land Survey Monument Record is correct and complete to the best of my knowledge and belief.

Signature: *Jeffrey W. Austin* Date: 10-30-2000



3806242000