

U.S. PUBLIC LAND SURVEY MONUMENT RECORD

Note: This form is intended and designed to fulfill all requirements of Wisconsin Administrative Code, Chapter A-E 7.08 U.S. Public Land Survey Monument Record (3) (a) (b) (c) (d) (e) (f) (g) (h) (i). An additional sheet may be added if necessary to conform with said requirements.

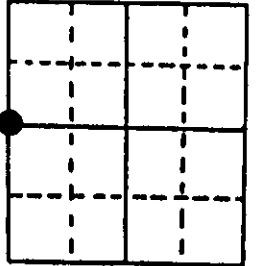
(a) Corner location: Township 38 North Corner: West 1/4 Corner

Section 30 Range 7 East Original Surveyor: Alfred Millard

Town/City/Village Lake Tomahawk

Original B.T.'s: 10" Py S42°W 16 lks
12" Pw N85°E 07 lks

County Oneida

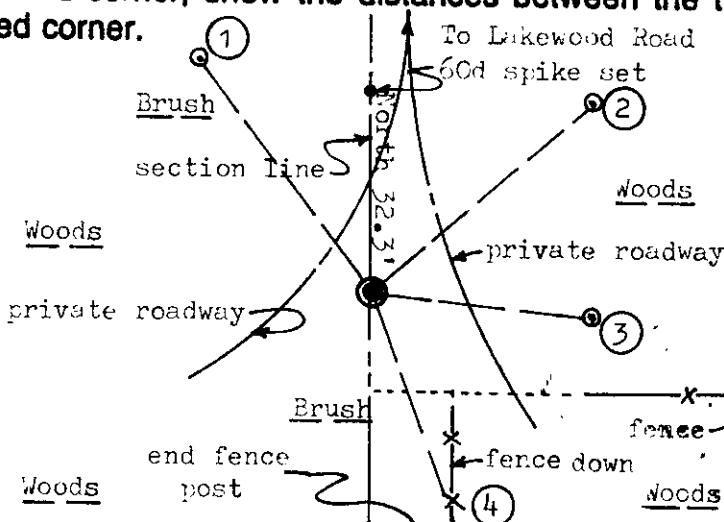


Original Survey Date: September 1860 ● Location

(b) (f) (g) (h) Description of monument found at this corner and if it was accepted, state all evidence (material, testimonial, occupational, plats, records, other monuments) used as a basis for accepting. If not accepted or if nothing was found, state evidence used as basis for establishing location. If reestablished through lost corner proportionate methods, indicate all monuments, distances and directions used to establish. Indicate type of monument found or set and sign post.

Found a disturbed 1 1/4" dia. iron pipe monument 8" below grade at corner location; I carefully removed the 18" long iron pipe monument and reset the corner with a standard 2" dia. x 30" long Berntsen aluminum monument with stamped Oneida County cap 10" below grade. Location of corner verified by traverse in cooperation with Norbert Viewers/DNR Surveyor and his assistant William Anderson. All original GLO survey corner evidence is now obliterated. In 1974, the iron pipe monument was also found and accepted at the corner by Inman Engineering of Minocqua, Wisconsin for a subdivision survey of Section 25 T 38N R6E. In 1981, Seymour/Wis DNR found the iron pipe monument bent at corner below grade, but no ties noted. This corner falls 15.5' North of a fence leading East and 13' West of a fence leading South and SW of the junction of existing roadways North, SE and SW. I set a standard white poly 'T' corner marker post 16.3' South of the corner monument and marked the offset distance on the face of the marker post with orange paint keel. The corner is 2640.04' South of a steel shaft at the NW corner of Section 30 and 1320.02' South of a RR spike at the W1/16NW forty corner of Section 30 on a right line by Topcon total station traverse measurements; Inman Engineering measured 1974 distances of 1320.10 and 2640.20 feet on a right line. I used 1" dia. iron pipe monuments for all references as no suitable bearing trees in immediate area found. This recovery was completed 8-5-97. I left old iron pipe monument flat on grade at reference monument No. 3.

(c) (d) (e) Plan view of corner with ties to at least 4 witness monuments. If in disagreement with previously established corner, show the distances between the two corners and also indicate the ties to the disputed corner.



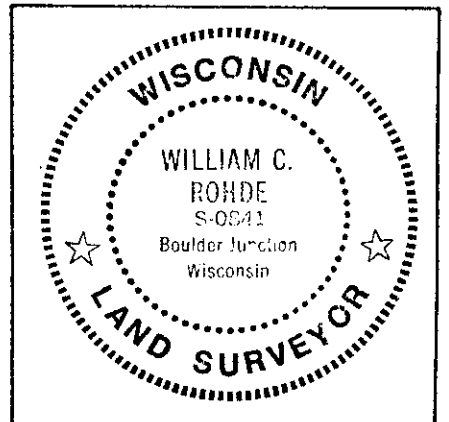
Witness Monument Ties:

- ① 1" dia. x 29" long iron pipe set with Ref Mk cap N37°W 45.58'.
- ② 1" dia. x 24" long iron pipe set with Ref Mk cap N49°E 45.60' and 1' West of 7" Aspen.
- ③ 1" dia. x 27" long iron pipe set with Ref Mk cap S83°E 34.46' and 10" West of 6" Cr.
- ④ 1" dia. x 27" long iron pipe set with Ref Mk cap S17°E 39.66' and 1' NE of end wood fence post.

Unless otherwise indicated, all BT witness monument ties are to a 1/4" dia. by 2.5" long PK nail with 1.25" dia. steel washer set in unblazed right face bark; and a PK nail with 2" dia. steel washer stamped BT also set in unblazed front face bark of each BT at DBH. All previous corner recovery notes from Wisconsin DNR and/or Oneida County survey records.



Scale: 1" = 30'



(i) I, William C. Rohde, RLS 841
(type or print name) certify that the corner location on this record was determined by me or under my direction and control and that this U.S. Public Land Survey Monument Record is correct and complete to the best of my knowledge and belief.

William C. Rohde

August 23, 1997

Signature

Date

SHEET 1 OF 1

3806252000

Index No. T-1