

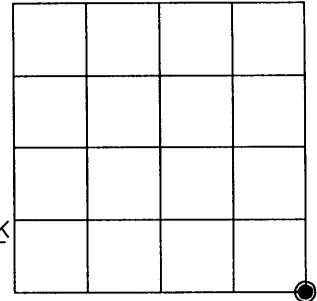
U.S. PUBLIC LAND SURVEY MONUMENT RECORD

Note: This form is intended and designed to fulfill all requirements of Wisconsin Administrative Code, Chapter A-E 7.08 U.S. Public Land Survey Monument Record (3)(a)(b)(c)(d)(e)(f)(g)(h)(i). An additional sheet may be added if necessary to conform with said requirements.

(a) CORNER LOCATION:

Oneida County Coordinates
 Southeast corner of Sec. 26
 Township 38 North
 Range 6 East
 Town/City/Village ~~XXXXXX~~ Hazelhurst
 County of Oneida

North 204639.51 feet
 East 191718.71 feet
 Control Station GPS 282
 Latitude 45°46'02.84298"
 Longitude 89°43'01.41363"
 Datum NAD 83, 91 Method GPS-RTK



(b) HISTORY OF ORIGINAL CORNER ESTABLISHMENT

Original Surveyor: Alexander Anderson Original B.T.'S SECTION 26
 Date of Survey: Commenced Sept. 28th, 1863 Spruce 5" S17°30'E, 54 lks
 Completed Oct. 5th, 1863 Spruce 5" S54°W, 52 lks

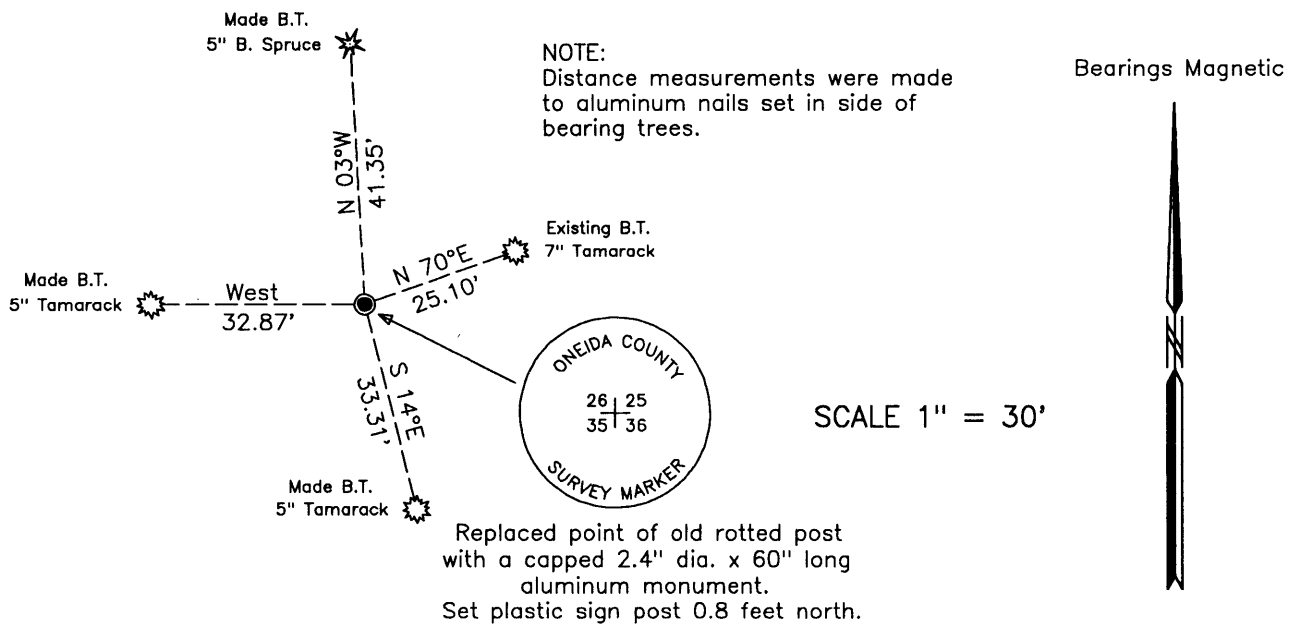
(f)(g)(h) Description of monument found at this corner and if it was accepted, state all evidence (material, testimonial, occupational, plats, records, other monuments) used as a basis for establishing location. If not accepted or if nothing was found, state evidence used as basis for establishing location. If reestablished through lost corner proportionate methods, indicate all monuments, distances and directions used to establish. Indicate type of monument and sign post found or set.

January 15, 1949 – Ivan Branham, Surveyor: Field Book 2, page 125, accepted SE Cor. Sec. 26 in large swamp about 1/4 mile south of Scott Creek.

March 26, 1980 – William H. Stuth, RLS No. 1418, map of survey by Owens-Illinois, Forest Products Division, identifies corner as being monumented by a post.

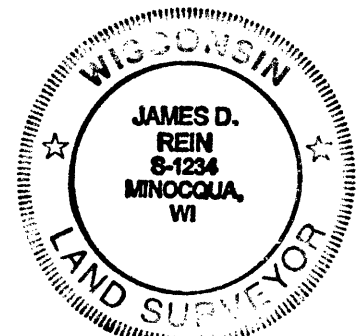
December 11, 2002 – James D. Rein, RLS No. 1234, recovered point of two old rotted posts, referenced by an existing bearing tree: 7" Tamarack, N 70°E, 25.10 feet (O-I tag marked "S 67°W, 24.7" 1980). This corner position is harmonious with Stuth's distance west to the 1/4 corner, thus I drove a capped 2.4" dia. x 60" long aluminum monument between the points to mark the corner, and made new bearing trees as shown in the plan.

(c)(d)(e) Plan view of corner with ties to at least 4 witness monuments. If in disagreement with previously established corner, show the distance between the two corners and also indicate the ties to the disputed corner.



(i) I, James D. Rein, Registered Land Surveyor No. 1234, hereby certify that the corner location on this record was determined by me or under my direction and control and that this U.S. Public Land Survey Monument Record is correct and complete to the best of my knowledge and belief.

James D. Rein February 28th, 2002
 Signature Date



38 06 26 00 00

INDEX NO. V 21