

This form is intended to fulfill the requirements of Chapter A-E7.08 (3)(a) thru (i) U.S. Public Land Survey Monument Location Record, Wisconsin Administrative Code. Use the reverse side of form for continuation.

U.S. PUBLIC LAND SURVEY MONUMENT LOCATION RECORD

USPLS CORNER: EAST WITNESS MC SECTION: 35 TOWNSHIP: 38 NORTH RANGE: 6 EAST
 NAME OF WATERWAY FOR M.C. CORNER: LONG LAKE SECTION LINE: NORTH
 (CITY)(VILLAGE)(TOWN) OF: HAZELHURST COUNTY OF: ONEIDA

Description of monument found or placed and all other evidence used as the basis for monument location; including monuments and measurements required if the corner location was reestablished by lost corner proportionate methods. Also indicate name of the original surveyor, original survey date and the corner monument, bearing trees, witness or other reference monuments established, including measured bearing and distance ties, from available survey records.

Found and accepted an older 1.25" dia. galvanized iron pipe with uncapped top OK at this corner, which I left in place and drove a standard 2" dia. by 30" long aluminum pipe monument over the iron pipe with stamped Oneida County cap 4" above existing grade; I also found a standard white poly "T" marker post 6" West of the corner monument which falls 2.5'+- East of existing lake shoreline bearing N10°W this date.

In September/October 1863, Alexander Anderson/GLO set a wood post as the original corner and noted OBTs: a 15" Py N04°E 13 links and a 10" Pw S22°E 9 links; all are now obliterated.

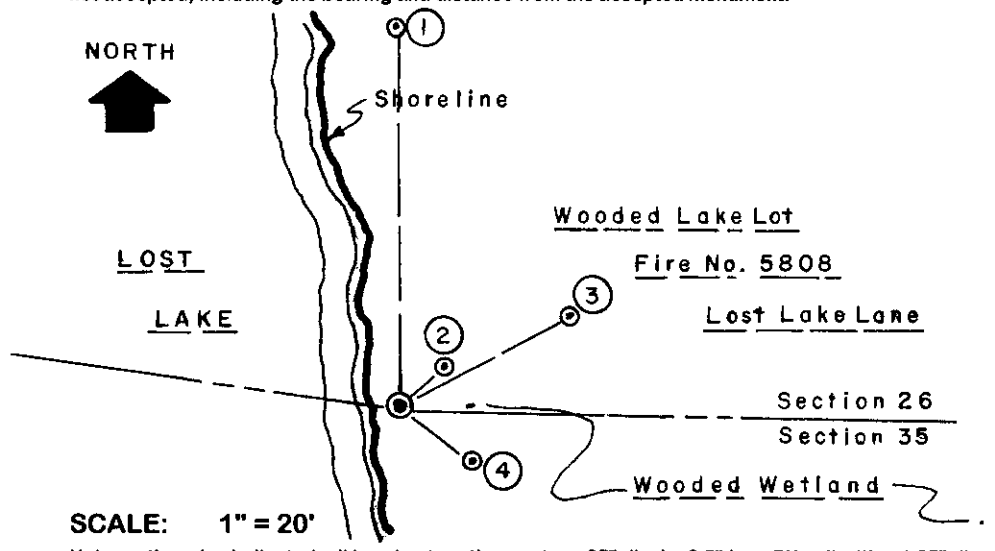
In September 1963, James G. Griffin/RLS 755 notes this MC and a 28" Pw BT N02°W 40.1', found OK and used for new ties below, per his Plat of Survey filed as A-797 in Oneida County survey records.

In June 1964, James G. Griffin/RLS 755 notes this MC and same 28" Pw BT NW per his Plat of Survey filed as B-3555 in Oneida County survey records.

In October 1974, Gerald B. Inman/RLS 891 notes a 1" iron pipe at this MC corner per his Plat of Survey filed as B-1214 in Oneida County survey records.

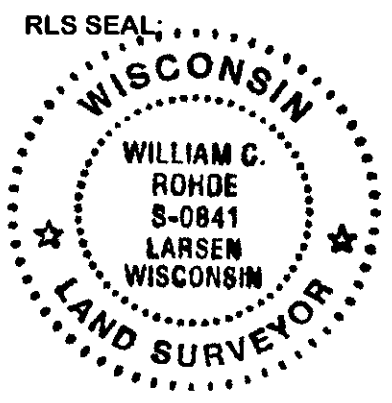
This recovery completed May 29, 2003; there were no direct witnesses.

Plan view map of monument location with bearing and distance ties to a minimum of four(4) described witness or reference monuments of concrete, natural stone, iron, live bearing trees or equivalent material. If applicable, also show a minimum of two(2) bearing and distance ties to any other monument found and not accepted; including the bearing and distance from the accepted monument.



- WITNESS MONUMENT TIES:**
- ① Old 30" Pw BT with lower blaze fissure plain N01°W 40.28'.
 - ② New 17" Pw BT N43°E 6.11'.
 - ③ New 17" Pw BT N60°E 19.97'.
 - ④ New 10" Tamarack BT S52°E 9.05'.
- I flagged the corner monument and 'T' marker post with blaze orange tape.

Unless otherwise indicated, all bearing tree ties are to a .25" dia. by 2.5" long PK nail with a 1.25" dia. steel washer driven into unblazed right face and a .25" dia. by 2.5" long PK nail with a 2" dia. steel washer stamped BT is also driven into unblazed face of bearing tree at DBH; the basis for measured bearings is by compass to nearest degree and all tie distances are measured horizontal by steel tape corrected to nearest 1/100th feet at standard temperature of 68° F.



LAND SURVEYOR CERTIFICATE:
 I, William C. Rohde, hereby certify that I am duly licensed as a Professional Land Surveyor in the State of Wisconsin; that this USPLS monument location was determined by me and/or under my direct supervision and control; and that this U.S. Public Land Survey Monument Location Record is true and correct to the best of my knowledge and belief.

Signed: *William C. Rohde*
 William C. Rohde RLS 841

