

# U.S. PUBLIC LAND SURVEY MONUMENT RECORD

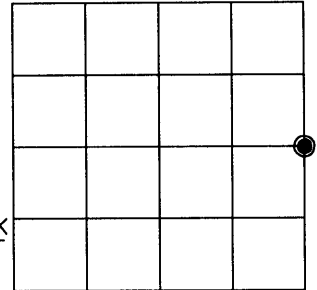
Note: This form is intended and designed to fulfill all requirements of Wisconsin Administrative Code, Chapter A-E 7.08 U.S. Public Land Survey Monument Record (3)(a)(b)(c)(d)(e)(f)(g)(h)(i). An additional sheet may be added if necessary to conform with said requirements.

**(a) CORNER LOCATION:**

East 1/4 corner of Sec. 26  
 Township 38 North  
 Range 6 East  
 Town/~~County~~ Hazelhurst  
 County of Oneida

Oneida County Coordinates

North 207257.83 feet  
 East 191800.42 feet  
 Control Station GPS 282  
 Latitude 45°46'02.84298"  
 Longitude 89°43'01.41363"  
 Datum NAD 83, 91 Method GPS -RTK



**(b) HISTORY OF ORIGINAL CORNER ESTABLISHMENT**

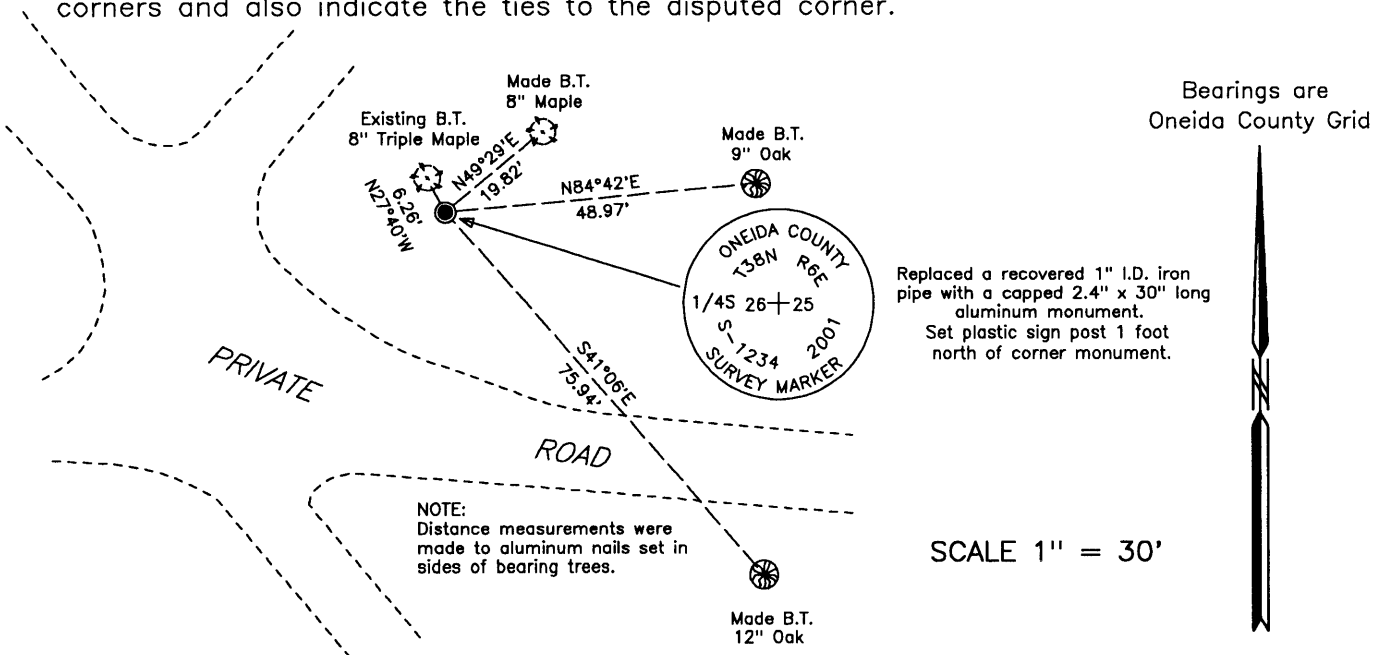
Original Surveyor: Alexander Anderson Original B.T.'S SECTION 26  
 Date of Survey: Commenced Sept. 28th, 1863 Fir 10" S72°W, 23 links  
 Completed Oct. 5th, 1863 Maple 7" S43°E, 21 links

**(f)(g)(h)** Description of monument found at this corner and if it was accepted, state all evidence (material, testimonial, occupational, plats, records, other monuments) used as a basis for establishing location. If not accepted or if nothing was found, state evidence used as basis for establishing location. If reestablished through lost corner proportionate methods, indicate all monuments, distances and directions used to establish. Indicate type of monument and sign post found or set.

February 23, 1955 – Ivan Branham, Surveyor: Field Book 2, page 131 "moved I.P. and Oak stake set 1949 as approx. E 1/4 Corner. Moved I.P. 0.22 S. and 0.11 E. and re-set as correct 1/4 Post. Bearing trees: Asp. 5" N42°E, 5; H. Mpl. 3" N37°W, 8; Asp. 4" S42°E, 21.

December 11, 2001 – James D. Rein, RLS No. 1234. Recovered 1" inside diameter iron pipe extending 7" above ground and an old 3" square Cedar post; referenced by an existing bearing tree, an 8" Triple Maple bearing N30°W, 6 feet. Although this corner is not located in its theoretical position, it is apparent the monument has been relied upon by common report, for almost fifty years, as marking the true corner position. I replaced the iron pipe with a capped aluminum monument and made additional bearing trees as shown in plan view. The northeast section corner bears North 00 degrees 48 minutes 33 seconds East for distance of 2613.54 feet. The southeast section corner bears South 01 degrees 47 minutes 15 seconds West for a distance of 2619.60 feet.

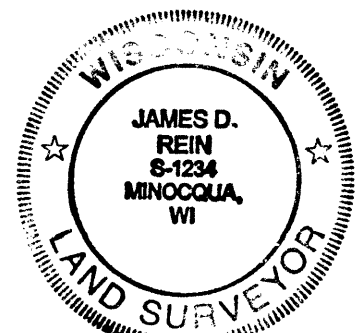
**(c)(d)(e)** Plan view of corner with ties to at least 4 witness monuments. If in disagreement with previously established corner, show the distance between the two corners and also indicate the ties to the disputed corner.



(i) I, James D. Rein, Registered Land Surveyor No. 1234, hereby certify that the corner location on this record was determined by me or under my direction and control and that this U.S. Public Land Survey Monument Record is correct and complete to the best of my knowledge and belief.

*James D. Rein*  
 Signature

February 28th, 2002  
 Date



3806262000

INDEX NO. T 21