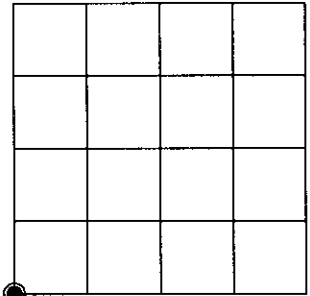


U.S. PUBLIC LAND SURVEY MONUMENT RECORD

Note: This form is intended and designed to fulfill all requirements of Wisconsin Administrative Code, Chapter A-E 7.08 U.S. Public Land Survey Monument Record (3)(a)(b)(c)(d)(e)(f)(g)(h)(i). An additional sheet may be added if necessary to conform with said requirements.

(a) CORNER LOCATION:

Southwest corner of Sec. 27 State Plane Coordinates
 Township 38 North X _____
 Range 6 East Y _____
 Town/City/Village ~~XXXXXX~~ Hazelhurst Datum Base _____
 County of Oneida



(b) HISTORY OF ORIGINAL CORNER ESTABLISHMENT

Original Surveyor: Alexander Anderson Original B.T.'S SECTION 27
 Date of Survey: Commenced Sept. 28th, 1863 Maple 6" S77°W, 19 links
 Completed Oct. 5th, 1863 Y. Pine 24" N7°W, 34 links

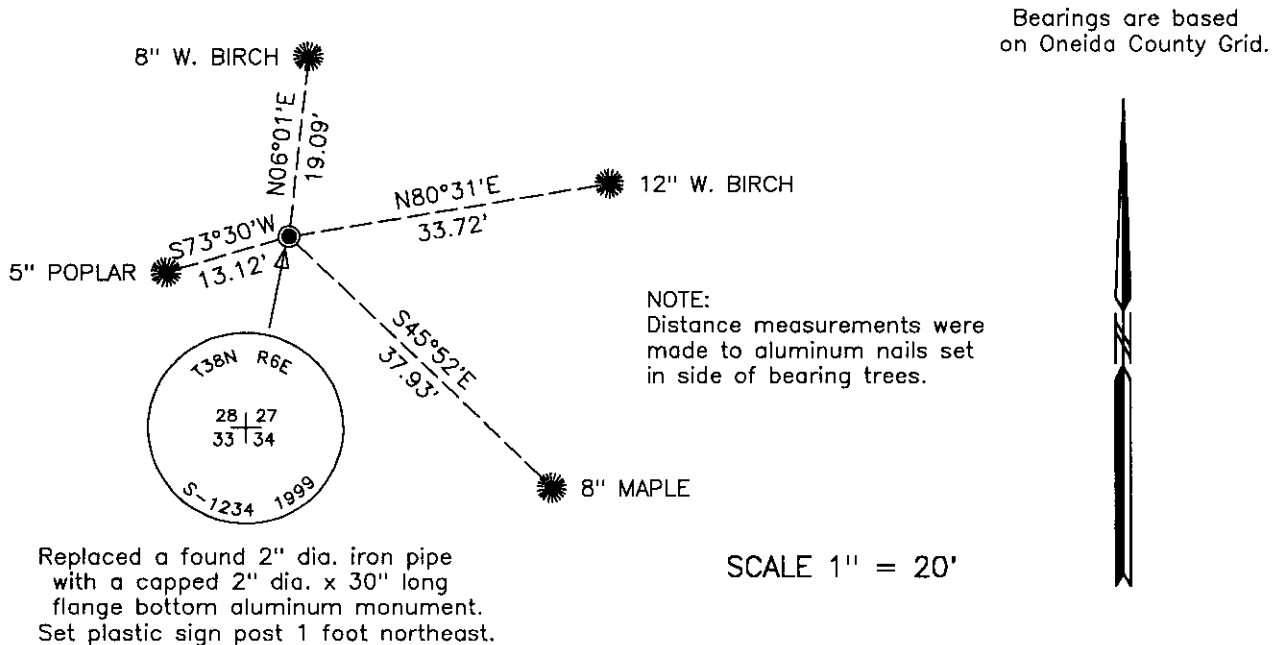
(f)(g)(h) Description of monument found at this corner and if it was accepted, state all evidence (material, testimonial, occupational, plats, records, other monuments) used as a basis for establishing location. If not accepted or if nothing was found, state evidence used as basis for establishing location. If reestablished through lost corner proportionate methods, indicate all monuments, distances and directions used to establish. Indicate type of monument and sign post found or set.

October, 1974 – Gerald Inman, Reg. Land Surveyor, on a section subdivision map for Section 34, T38N, R6E, identifies corner as being monument by a 2" iron pipe.

July 11, 1977 – W. H. Stuth, Surveyor for Owens-Illinois, on map of survey, identifies corner monumented by an iron pipe, referenced by 8" W. Birch S54°E, 22.0' and by a 7" W. Birch N78°E, 33.5 feet.

September 2, 1999 – James D. Rein, R.L.S. No. 1234, recovered 2" dia. iron pipe referenced by Stuth's northeast bearing tree. I accept this monument as best evidence for the original corner and we replace it with a capped 2" dia. x 30" long flange bottom aluminum monument. We set a plastic sign post 1 foot northeast of the corner monument and make ties to new bearing trees as shown in plan view.

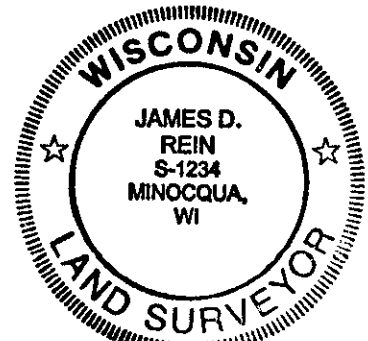
(c)(d)(e) Plan view of corner with ties to at least 4 witness monuments. If in disagreement with previously established corner, show the distance between the two corners and also indicate the ties to the disputed corner.



Replaced a found 2" dia. iron pipe with a capped 2" dia. x 30" long flange bottom aluminum monument. Set plastic sign post 1 foot northeast.

(i) I, James D. Rein, Registered Land Surveyor No. 1234, hereby certify that the corner location on this record was determined by me or under my direction and control and that this U.S. Public Land Survey Monument Record is correct and complete to the best of my knowledge and belief.

James D. Rein February 19, 2001
 Signature Date



INDEX NO. V-13

3806280000