

# U.S. PUBLIC LAND SURVEY MONUMENT RECORD

REGISTER OF DEEDS OFFICE  
ONEIDA COUNTY  
FILED

JUN 01 2017

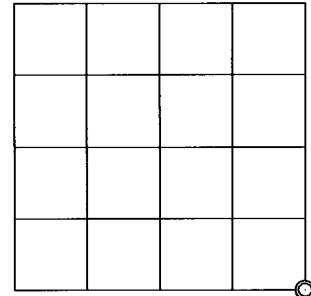
Note: This form is intended and designed to fulfill all requirements of the Wisconsin Administrative Code, Chapter A-E 7.08 U.S. Public Land Monument Record (3)(a)(b)(c)(d)(e)(f)(g)(h)(i). An additional sheet may be added if necessary to conform with said requirements.

AT \_\_\_\_\_ O'CLOCK \_\_\_\_\_ M  
KYLE J. FRANSON  
REGISTER OF DEEDS

(a) CORNER LOCATION: WISCRS - Oneida County  
Southeast Corner of Section 29 North: 204501.176 USft  
Township 38 North East: 170178.075 USft  
Range 6 East Latitude: 45° 44' 48.15441" N  
Town of Hazelhurst Longitude: 89° 45' 18.89066" W  
County of Oneida Datum: NAD 83(2011)  
GNSS Method: RTK - Direct  
GNSS Control: WISCORS VRS  
Record North: 204501.239 USft \*  
Record East: 176177.305 USft \*  
Record Datum: NAD 83(1991)

( RECORDING AREA )

SECTION 29



(b) HISTORY OF ORIGINAL CORNER ESTABLISHMENT

Original Surveyor: Alexander Anderson \* = Previous tie is to wood post  
Date of Survey: Commenced September 28th, 1863  
Completed October 5th, 1863  
Original B.T.'S: Tamarac 6" N 80°E, 16 lks.  
Tamarac 7" S 40°W 45 lks.

(f)(g)(h) DESCRIPTION OF MONUMENT FOUND AT THIS CORNER AND IF IT WAS ACCEPTED, STATE ALL EVIDENCE (MATERIAL, TESTIMONIAL, OCCUPATIONAL, PLATS, RECORD, OTHER MONUMENTS) USED AS A BASIS FOR ESTABLISHING LOCATION. IF NOT ACCEPTED OR IF NOTHING WAS FOUND, STATE EVIDENCE USED AS BASIS FOR ESTABLISHING LOCATION. IF REESTABLISHED THROUGH LOST CORNER PROPORTIONATE METHODS, INDICATE ALL MONUMENTS, DISTANCES AND DIRECTIONS USED TO ESTABLISH. INDICATE TYPE OF MONUMENT AND SIGN POST FOUND OR SET.

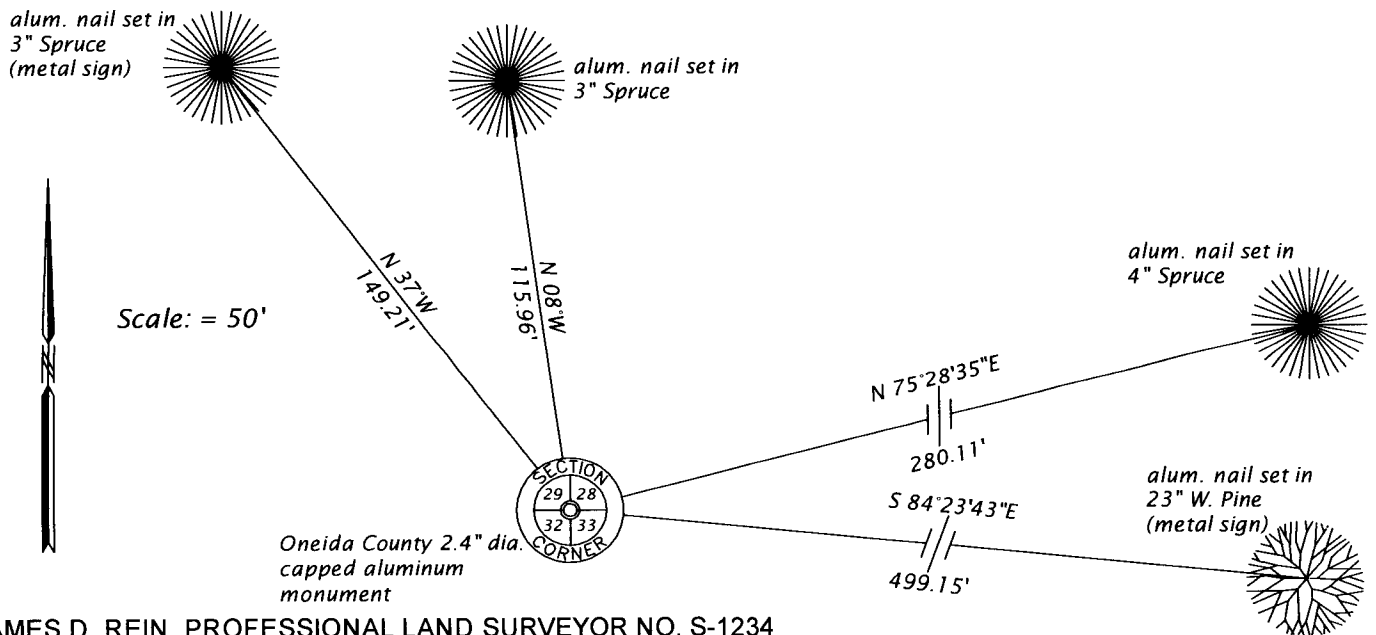
October 12, 1937 - Ray H. Hall, Surveyor CCC Camp 75-S, (CCC Book 8, page 60) Aerial Survey, with Hassler, corner to Sections 28-29-32-33 identified by Orig. south BT dead: facing N25°W ±. No evidence of post or other BT, if notes are taken literally. There a very old post facing BT + agreeing closely with stp. of possible other brng. Set new post in place of old one. Original S24°E, 0.224 ch.; Original ? N78°E, 0.18 ch.; New spruce 5" S84°E, 0.371 ch.; and new spruce 6" S12°W, 0.196 ch.

1964 - Nekoosa Edwards Paper Co. and Ownens-Illinois, map of lines established in Sec. 29 - 31 & 32, T38N, R6E, filed as B1318 in county surveyor's office, legends this corner "Old Corner", referenced by a Tam. stp. 5" S54°E, 48.7 feet; and a Tam. stp. 5" N51°W, 89.0 feet.

December 29, 2016, James D. Rein, PLS No. 1234, we recovered a 3" dia. x 20" wood post point 10" below surface of barren black spruce swamp. A 2 1/2" dia. iron pipe found lying flat adjacent to wood post. Another old 4" sq. wood post with location poster is located west 0.7 feet and a white poly stake found west 1 foot. The recovered post point position is harmonious with the the joint Nekoosa / Owens-Illinois survey, thus I accept it as the best available evidence of the original corner and we replaced the post with an Oneida County capped 2.4" dia. x 60" long aluminum monument and made reference ties as shown in the plan.

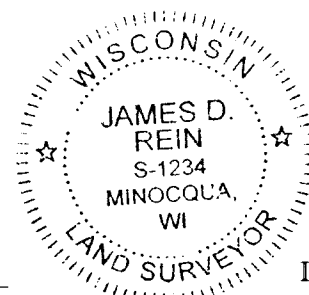
The coordinate value shown has been verified by at least one of the following methods: 1) comparison to a previously GPS determined published value; 2) the value is the average of two or more GPS observations at a markedly different time; 3) one or more distances were measured back to the GPS observed corner from temporary GPS observed offset locations.

(c)(d)(e) PLAN VIEW OF CORNER WITH TIES TO AT LEAST 4 WITNESS MONUMENTS. IF IN DISAGREEMENT WITH PREVIOUSLY ESTABLISHED CORNER, SHOW THE DISTANCE BETWEEN THE TWO CORNERS AND ALSO INDICATE THE TIES TO THE DISPUTED CORNER.



(i) I, JAMES D. REIN, PROFESSIONAL LAND SURVEYOR NO. S-1234 HEREBY CERTIFY THAT THE CORNER LOCATION ON THIS RECORD WAS DETERMINED BY ME OR UNDER MY DIRECTION AND CONTROL AND THAT THIS U.S. PUBLIC LAND SURVEY MONUMENT RECORD IS CORRECT AND COMPLETE TO THE BEST OF MY KNOWLEDGE AND BELIEF.

  
SIGNATURE  
5-24-17  
DATE



INDEX NO. V - 9  
3806290000