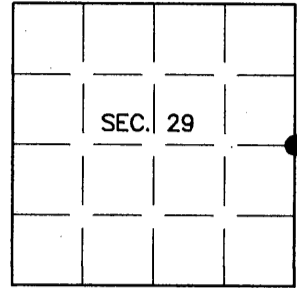


U.S. PUBLIC LAND SURVEY MONUMENT RECORD

Note: This form is intended and designed to fulfill all requirements of Wisconsin Administrative Code, Chapter A-E 7.08 U.S. Public Land Survey Monument Record (3)(a)(b)(c)(d)(e)(f)(g)(h)(i). An additional sheet may be added if necessary to conform with said requirements.

(a) CORNER LOCATION: Plane Coordinates
 1/4 Cor. of Secs. 28 & 29 X: 176,077.13'
 Township 38 North Y: 207,162.27'
 Range 6 East of the 4th P.M. Datum: ONEIDA91
 Town of Hazelhurst County of Oneida



(b) HISTORY OF ORIGINAL CORNER ESTABLISHMENT

Original Surveyor: Alexander Anderson Original Accessories:
 Date of Survey: Commenced Sept., 1863 Y. Pine 8" S31°W, 18 lks.
 Completed Oct., 1863 Y. Pine 12" S16°E, 17 lks.

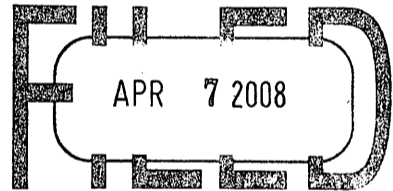
(b)(f)(g)(h) Description of monument found at this corner and if it was accepted, state all evidence (material, testimonial, occupational, plats, records, other monuments) used as a basis for accepting. If not accepted or if nothing was found, state evidence used as basis for establishing location. If re-established through lost corner proportionate methods, indicate all monuments, distances and directions used to establish. Indicate type of monument and sign post found or set.

1964: OCS #B-1318 by William H. Stuth, RLS. Proportioned 2" iron pipe and bearing trees: oak 5" S71°E, 39.2' and red pine 16" S3°E, 70.7'.

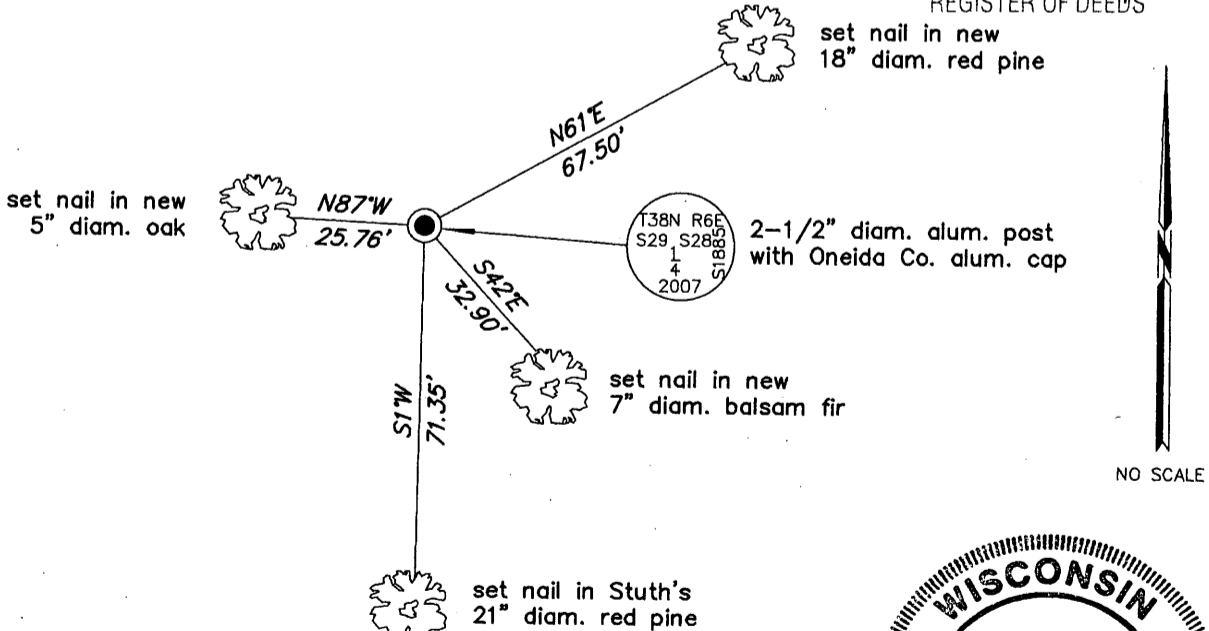
10 December 2007: After unsuccessfully searching for remains of the GLO bearing trees, I found and accepted an iron pipe, 30" long, 2-1/2" diam. I replaced the pipe with an aluminum post, 60" long, 2-1/2" diam. with Oneida Co. aluminum cap projecting 12" above the bog. I found or established accessories as shown below and set a white plastic sign post bearing West, 1 ft. dist.

The coordinates shown above were derived from an RTK GPS survey with the base receiver situated on Oneida Co. control station 282S. The base coordinates were confirmed with a check on section corner 3806150000.

REGISTER OF DEEDS OFFICE
ONEIDA COUNTY, WIS.



(c)(d)(e) Plan view of corner with ties to at least 4 witness monuments. If in disagreement with previously established corner, show the distances between the two corners and also indicate the ties to the disputed corner.



(i) I, Jeffrey W. Austin, Registered Land Surveyor No. S-1885, hereby certify upon honor that the corner location on this record was determined by me or under my direction and control and that this U.S. Public Land Survey Monument Record is correct and complete to the best of my knowledge and belief.


 Signature

MAR. 7, 2008
 Date



INDEX NO. T-9 (3806292000)