

U.S. PUBLIC LAND SURVEY MONUMENT RECORD

Note: This form is intended and designed to fulfill all requirements of the Wisconsin Administrative Code, Chapter A-E 7.08 U.S. Public Land Monument Record (3)(a)(b)(c)(d)(e)(f)(g)(h)(i). An additional sheet may be added if necessary to conform with said requirements.

REGISTER OF DEEDS OFFICE
ONEIDA COUNTY
FILED

JUN 08 2017

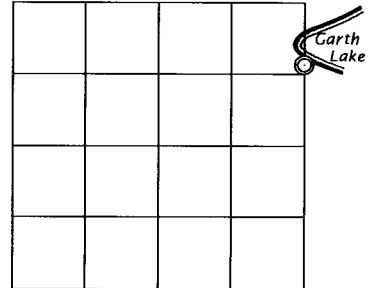
(a) CORNER LOCATION:
S. Meander Corner east line of Section 29
Township 38 North
Range 6 East
Town of Hazelhurst
County of Oneida

WISCRS - Oneida County
North: 208665.215 USft
East: 176019.034 USft
Latitude: 45° 45' 29.25629" N
Longitude: 89° 45' 21.28828" W
Datum: NAD 83(2011)
GNSS Method: RTK - Direct
GNSS Control: WISCORS VRS
Record North: 208490.692 USft *
Record East: 176025.491 USft *
Record Datum: NAD 83(1991)

AT O'GLOCK
KYLE J. FRANSON
REGISTER OF DEEDS

(RECORDING AREA)

SECTION 29



(b) HISTORY OF ORIGINAL CORNER ESTABLISHMENT

Original Surveyor: Alexander Anderson
Date of Survey: Commenced September 28, 1863
Completed October 5, 1863
Original B.T.'S: Spruce 6" S 23°E, 52 lks.
Spruce 6" S 47°W 83 lks.

* = Published coordinates are to the N 1/16 Corner.

(f)(g)(h) DESCRIPTION OF MONUMENT FOUND AT THIS CORNER AND IF IT WAS ACCEPTED, STATE ALL EVIDENCE (MATERIAL, TESTIMONIAL, OCCUPATIONAL, PLATS, RECORD, OTHER MONUMENTS) USED AS A BASIS FOR ESTABLISHING LOCATION. IF NOT ACCEPTED OR IF NOTHING WAS FOUND, STATE EVIDENCE USED AS BASIS FOR ESTABLISHING LOCATION. IF REESTABLISHED THROUGH LOST CORNER PROPORTIONATE METHODS, INDICATE ALL MONUMENTS, DISTANCES AND DIRECTIONS USED TO ESTABLISH. INDICATE TYPE OF MONUMENT AND SIGN POST FOUND OR SET.

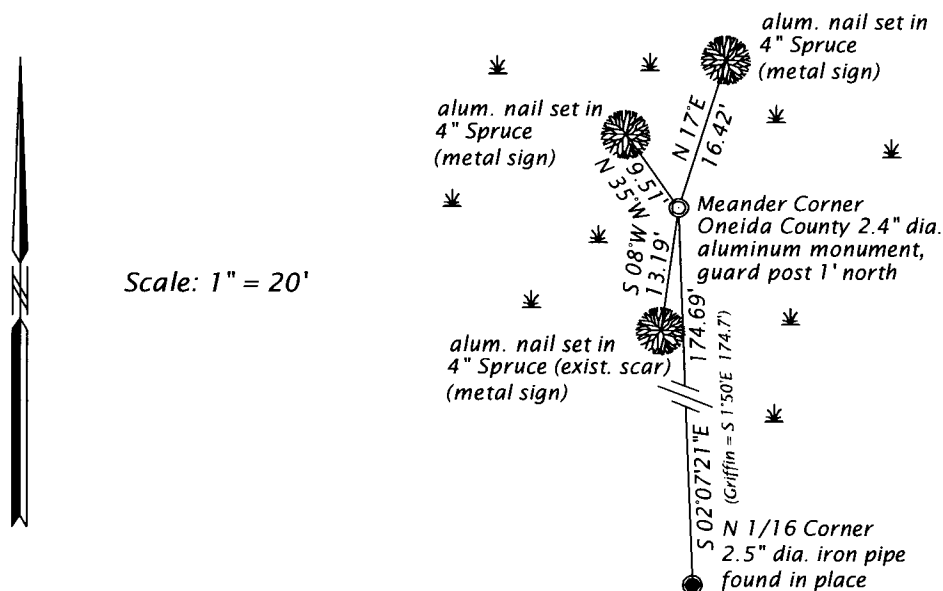
January 14, 1939, Ray H. Hall, Survey CCC Camp 75-S, (CCC Book 11, page 10) Hall + Hassler, Orig. MC found by Gould + Hassler 1935. They found a marked slab (of E. brg), now gone. However the SW Tamarac is OK and we cut same off 6' high. Set new Tamarac post by rec. course + dist. (N45°E, .83) from the BT. Other spruce seems only a mound of moss, but G + H found iron marked slab. New 0' Var. Dead Tamarac 5" S26°E, .635 ch.' Tamarac 3" S62°W, .495 ch.; Boat House E. shore brs. N71°E over tip of point 6 1/2 chains from MC; Two green pines br. N50°W, 6 3/4 ch. (paced).

1964 - Nekoosa Edwards Paper Co. and Owens-Illinois, map of lines established in Sec. 29 - 31 & 32, T38N, R6E, filed as B1318 in county surveyor's office, legends this corner a 2' iron pipe, referenced by a Tam. stp. 4" S30°E, 41.7 feet; and a Tam. stp. 5" S44°W, 54.7 feet.

(CONTINUED ON REVERSE PAGE)

The coordinate value shown has been verified by at least one of the following methods: 1) comparison to a previously GPS determined published value; 2) the value is the average of two or more GPS observations at a markedly different time; 3) one or more distances were measured back to the GPS observed corner from temporary GPS observed offset locations.

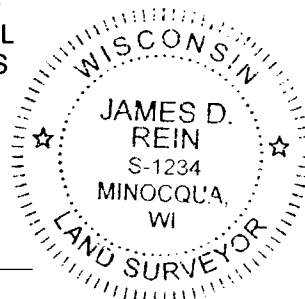
(c)(d)(e) PLAN VIEW OF CORNER WITH TIES TO AT LEAST 4 WITNESS MONUMENTS. IF IN DISAGREEMENT WITH PREVIOUSLY ESTABLISHED CORNER, SHOW THE DISTANCE BETWEEN THE TWO CORNERS AND ALSO INDICATE THE TIES TO THE DISPUTED CORNER.



(i) I, JAMES D. REIN, PROFESSIONAL LAND SURVEYOR NO. S-1234 HEREBY CERTIFY THAT THE CORNER LOCATION ON THIS RECORD WAS DETERMINED BY ME OR UNDER MY DIRECTION AND CONTROL AND THAT THIS U.S. PUBLIC LAND SURVEY MONUMENT RECORD IS CORRECT AND COMPLETE TO THE BEST OF MY KNOWLEDGE AND BELIEF.

James D. Rein
SIGNATURE

5-24-17
DATE



INDEX NO. RS - 9
3806293100

(CONTINUED FROM REVERSE PAGE)

December 1964 - James G. Griffin, RLS No. 755, Northwoods Surveyors map, filed as B3553 in county surveyor's office, for a survey in Gov't. Lot 1, Section 29, T38N, R6E, legends iron pipe for this meander corner, and a notation (by NEPCO) and bt's: 5" Tamarack S45°W, 54.7 feet. and a 4" Tamarack stp. S28°E, 41.6 feet.

December 30, 2016 - James D. Rein, PLS No. 1234, we recovered a 1.25" o.d. iron pipe, the position of which is harmonious with the Nekoosa / Owens-Illinois and Griffin surveys. I accept this location as being a perpetuation of the original corner, and we placed an Oneida County capped 2.4" dia. x 60" long aluminum monument over the pipe and made reference ties as shown in the plan.