

U.S. PUBLIC LAND SURVEY MONUMENT RECORD

REGISTERED PROFESSIONAL LAND SURVEYOR
ONEIDA COUNTY
WI

Note: This form is intended and designed to fulfill all requirements of the Wisconsin Administrative Code, Chapter A-E 7.08 U.S. Public Land Monument Record (3)(a)(b)(c)(d)(e)(f)(g)(h)(i). An additional sheet may be added if necessary to conform with said requirements.

JUN 22 2017

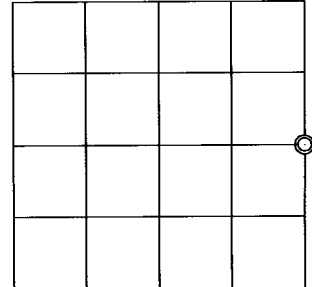
(a) CORNER LOCATION:
East Quarter Corner of Section 30
Township 38 North
Range 6 East
Town of Hazelhurst
County of Oneida

WISCRS - Oneida County
North: * USft *Both RTK and Static GPS/GNSS observations for this corner were not resolved to acceptable coordinates because of dense forest canopy.
East: * USft
Latitude:
Longitude:
Datum: NAD 83(2011)
GNSS Method: Static - Direct
GNSS Control: WISCORS VRS
Record North: 207091.223 USft
Record East: 170778.77 USft
Record Datum: NAD 83(1991)

AT _____ O'CLOCK _____ M
KYLE J. FRANSON
REGISTER OF DEEDS

(RECORDING AREA)

SECTION 30



(b) HISTORY OF ORIGINAL CORNER ESTABLISHMENT

Original Surveyor: Alexander Anderson
Date of Survey: Commenced September 28, 1863
Completed October 5, 1863
Original B.T.'S: Birch 12" S 41°E, 20 lks.
Birch 10" N 36°W 8 lks.

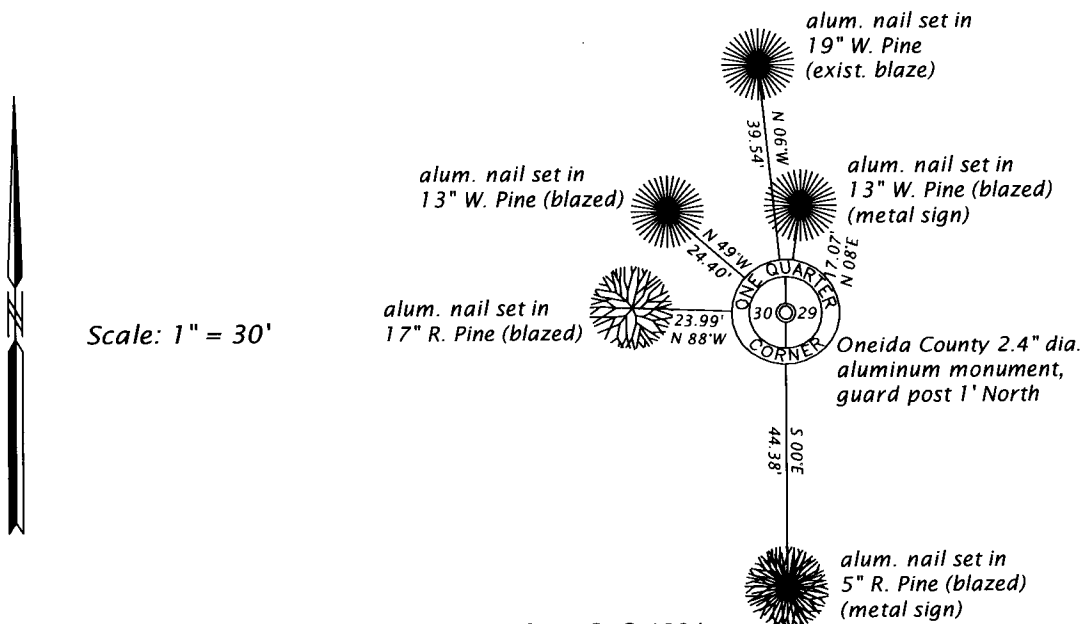
(f)(g)(h) DESCRIPTION OF MONUMENT FOUND AT THIS CORNER AND IF IT WAS ACCEPTED, STATE ALL EVIDENCE (MATERIAL, TESTIMONIAL, OCCUPATIONAL, PLATS, RECORD, OTHER MONUMENTS) USED AS A BASIS FOR ESTABLISHING LOCATION. IF NOT ACCEPTED OR IF NOTHING WAS FOUND, STATE EVIDENCE USED AS BASIS FOR ESTABLISHING LOCATION. IF REESTABLISHED THROUGH LOST CORNER PROPORTIONATE METHODS, INDICATE ALL MONUMENTS, DISTANCES AND DIRECTIONS USED TO ESTABLISH. INDICATE TYPE OF MONUMENT AND SIGN POST FOUND OR SET.

1964 - Nekoosa Edwards Paper Co. and Owens-Illinois, map of lines established in Sec. 29 - 31 & 32, T38N, R6E, filed as B1318 in county surveyor's office, legends this corner a "2" iron pipe", referenced by a W.P. 7" N7°W, 39.4 feet and by a Maple 8" S82°E, 12.9 feet.

April 6, 2017 - James D. Rein, PLS No. 1234, we recovered a 2.5" dia. iron pipe and a white guard post 1' north. We are unable to find any evidence of the original corner. I accept this monumented corner position, based on my analysis of the published controlling corner coordinates, as good faith re-establishment of the corner by single proportionate measurement. We replaced the iron pipe with an Oneida County capped 2.4" dia. x 30" long aluminum monument and made reference ties as shown in the plan.

~~The coordinate value shown has been verified by at least one of the following methods: 1) comparison to a previously GPS determined published value; 2) the value is the average of two or more GPS observations at a markedly different time; 3) one or more distances were measured back to the GPS observed corner from temporary GPS observed offset locations.~~

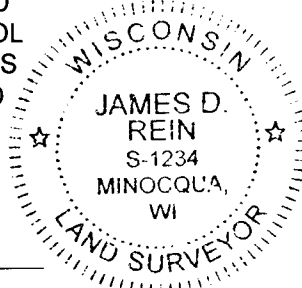
(c)(d)(e) PLAN VIEW OF CORNER WITH TIES TO AT LEAST 4 WITNESS MONUMENTS. IF IN DISAGREEMENT WITH PREVIOUSLY ESTABLISHED CORNER, SHOW THE DISTANCE BETWEEN THE TWO CORNER AND ALSO INDICATE THE TIES TO THE DISPUTED CORNER.



(i) I, JAMES D. REIN, PROFESSIONAL LAND SURVEYOR NO. S-1234 HEREBY CERTIFY THAT THE CORNER LOCATION ON THIS RECORD WAS DETERMINED BY ME OR UNDER MY DIRECTION AND CONTROL AND THAT THIS U.S. PUBLIC LAND SURVEY MONUMENT RECORD IS CORRECT AND COMPLETE TO THE BEST OF MY KNOWLEDGE AND BELIEF.

[Handwritten Signature]

6-12-17
DATE



INDEX NO. T-5
3806302000

SIGNATURE