

JUN 30 2016

AT _____ O'CLOCK _____ M
KYLE J. FRANSON
REGISTER OF DEEDS

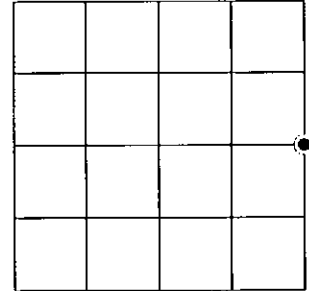
U.S. PUBLIC LAND SURVEY MONUMENT RECORD

Note: This form is intended and designed to fulfill all requirements of the Wisconsin Administrative Code, Chapter A-E 7.08 U.S. Public Land Monument Record (3)(a)(b)(c)(d)(e)(f)(g)(h)(i). An additional sheet may be added if necessary to conform with said requirements.

(a) CORNER LOCATION: COORDINATES
East Quarter Corner of Section 31 North: 201803.570
Township 38 North East: 170774.479
Range 6 East Projection: WISCRS - Oneida
Town of Hazelhurst Datum: NAD 1983(2011)
County of Oneida Method: RTK

(RECORDING AREA)

SECTION 31



(b) HISTORY OF ORIGINAL CORNER ESTABLISHMENT

Original Surveyor: Alexander Anderson
Date of Survey: Commenced September 28, 1863
Completed October 5, 1863
Original B.T.'S: 7" Spruce, S 87°W, 24 lks.
8" Spruce, S 27°E, 8 lks.

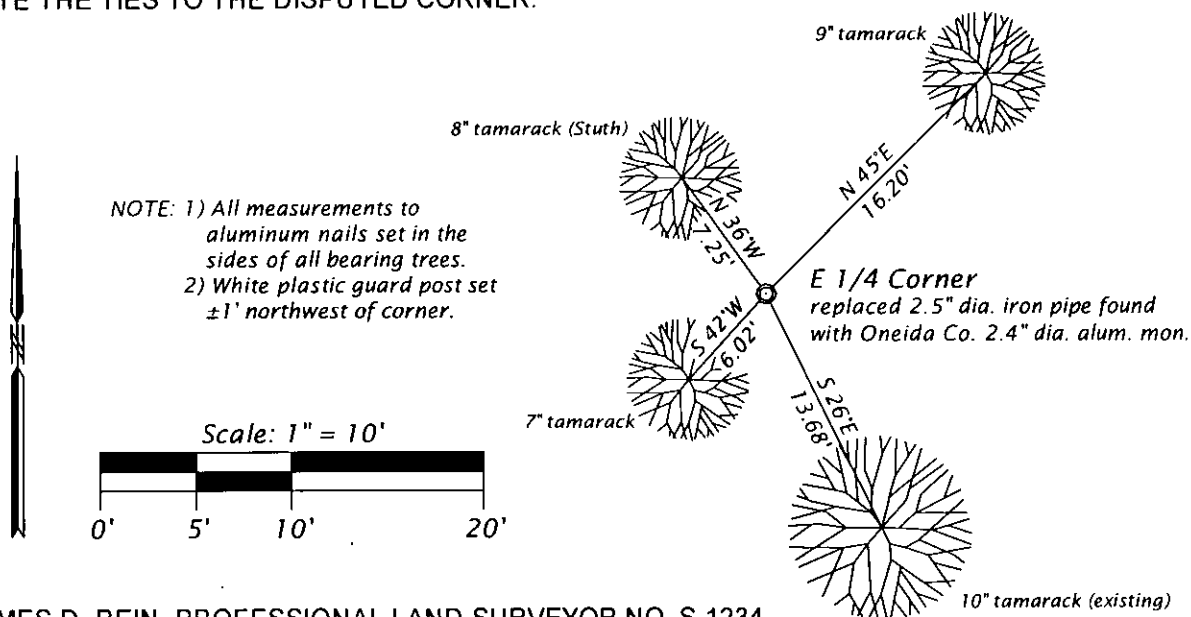
(f)(g)(h) DESCRIPTION OF MONUMENT FOUND AT THIS CORNER AND IF IT WAS ACCEPTED, STATE ALL EVIDENCE (MATERIAL, TESTIMONIAL, OCCUPATIONAL, PLATS, RECORDS, OTHER MONUMENTS) USED AS A BASIS FOR ESTABLISHING LOCATION. IF NOT ACCEPTED OR IF NOTHING WAS FOUND, STATE EVIDENCE USED AS BASIS FOR ESTABLISHING LOCATION. IF REESTABLISHED THROUGH LOST CORNER PROPORTIONATE METHODS, INDICATE ALL MONUMENTS, DISTANCES AND DIRECTIONS USED TO ESTABLISH. INDICATE TYPE OF MONUMENT AND SIGN POST FOUND OR SET.

1964 - William H. Stuth, in a joint survey between O-I and NEPCO, surveyed and subdivided Section 31. On a subsequent survey, dated 8/20/86, he shows an iron pipe or cap at the east quarter corner location. He shows two BT's: 4" Spruce, S 88°E, 7.3' and a 4" Spruce, N48°W, 7.2'. He shows 2650.3' to northeast section corner.

2015 - While surveying in Section 32, Theodore G. Sommer shows a found 2.25" iron pipe at the quarter corner location. He shows 2646.59' to northwest section corner. See Oneida County Surveyor's Office Map No. B7761.

2015 - While surveying in Section 31, James D. Rein found and accepted a 2.5" dia. iron pipe at the quarter corner location. See our Map No. 15 - 176, dated October 22, 2015. We replaced the 2.5" dia. iron pipe found with an Oneida County 2.4" dia. x 30" long, flanged-bottom, aluminum monmunt. See reference ties below.

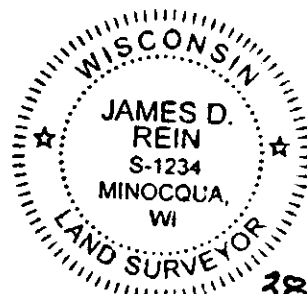
(c)(d)(e) PLAN VIEW OF CORNER WITH TIES TO AT LEAST 4 WITNESS MONUMENTS. IF IN DISAGREEMENT WITH PREVIOUSLY ESTABLISHED CORNER, SHOW THE DISTANCE BETWEEN THE TWO CORNERS AND ALSO INDICATE THE TIES TO THE DISPUTED CORNER.



(i) I, JAMES D. REIN, PROFESSIONAL LAND SURVEYOR NO. S-1234 HEREBY CERTIFY THAT THE CORNER LOCATION ON THIS RECORD WAS DETERMINED BY ME OR UNDER MY DIRECTION AND CONTROL AND THAT THIS U.S. PUBLIC LAND SURVEY MONUMENT RECORD IS CORRECT AND COMPLETE TO THE BEST OF MY KNOWLEDGE AND BELIEF.

James D. Rein
SIGNATURE

10-22-15
DATE



3806312000

INDEX NO. X5