

# U.S. PUBLIC LAND SURVEY MONUMENT RECORD

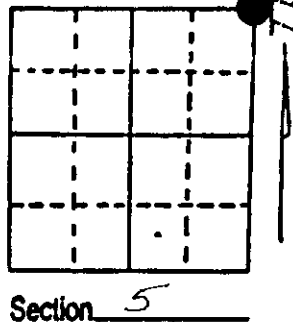
**Note:** This form is intended and designed to fulfill all requirements of Wisconsin Administrative Code, Chapter A-E 7.08 U.S. Public Land Survey Monument Record (3) (a) (b) (c) (d) (e) (f) (g) (h) (i). An additional sheet may be added if necessary to conform with said requirements.

(a) Corner location: Township 37 North

Range 6 East/West

Town/City/Village Cassian

County Oneida



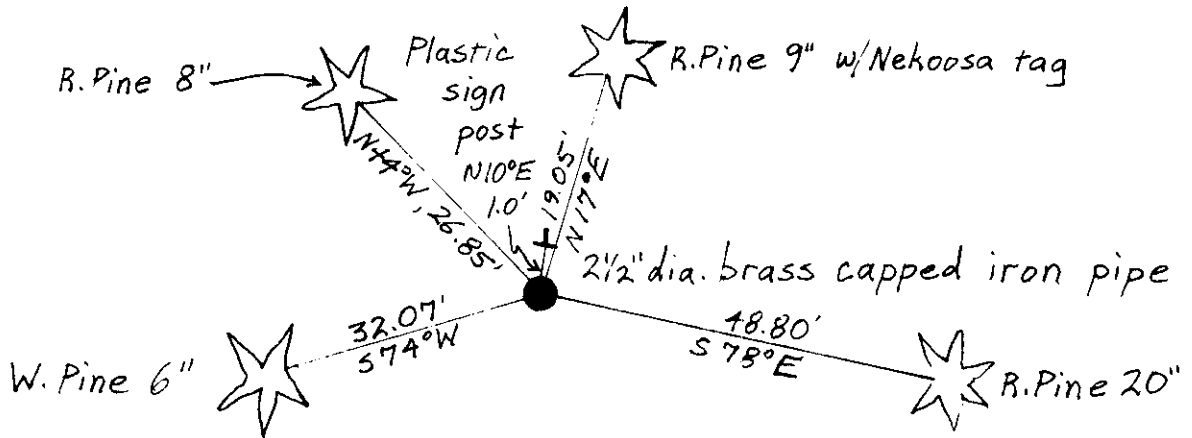
(b) (f) (g) (h) Description of monument found at this corner and if it was accepted, state all evidence (material, testimonial, occupational, plats, records, other monuments) used as a basis for accepting. If not accepted or if nothing was found, state evidence used as basis for establishing location. If reestablished through lost corner proportionate methods, indicate all monuments, distances and directions used to establish. Indicate type of monument found or set and sign post.

September, 1860, Alfred Millard set a wood post: Aspen 8" N41E, 42ks., Aspen 3" S49E, 41ks., Aspen 3" S26W, 181ks., W.Birch 4" N49W, 121ks.

-----  
 12-1-36, Maine set an Official Corner: Y.Pine 18" N14W, .52, W.Pine 12" N38E, .63½, Y.Pine 12" S70E, .72-¾.

-----  
 5-17-89, I found and accepted a 2½" dia, brass capped iron pipe: set spike in N.Pine 9" N17E, 19.05', set spike in N.Pine 20" S78E, 48.80', set spike in N.Pine 8" N44W, 26.85', set spike in W.Pine 6" S74W, 32.07', set plastic survey marker sign N10E, 1 foot.

(c) (d) (e) Plan view of corner with ties to at least 4 witness monuments. If in disagreement with previously established corner, show the distances between the two corners and also indicate the ties to the disputed corner.



*Distances to nail in side of tree*

(i) I, JEFFREY W. AUSTIN S-1885  
 (type or print name) certify that the corner location on this record was determined by me or under my direction and control and that this U.S. Public Land Survey Monument Record is correct and complete to the best of my knowledge and belief.

*Jeffrey W. Austin* JUNE 30, 1989  
 Signature Date



Index No. A-9

3806320000