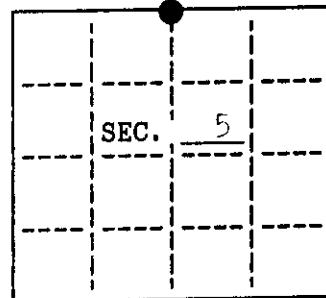


U.S. PUBLIC LAND SURVEY MONUMENT RECORD

Note: This form is intended and designed to fulfill all requirements of Wisconsin Administrative Code, Chapter A-E 7.08 U.S. Public Land Survey Monument Record (3)(a)(b)(c)(d)(e)(f)(g)(h)(i). An additional sheet may be added if necessary to conform with said requirements.

(a) CORNER LOCATION: State Plane Coordinates
 N 1/4 corner of Sec. 5 X _____
 Township 37 North Y _____
 Range 6 East Datum Base _____
 Town/City Cassian County of Oneida



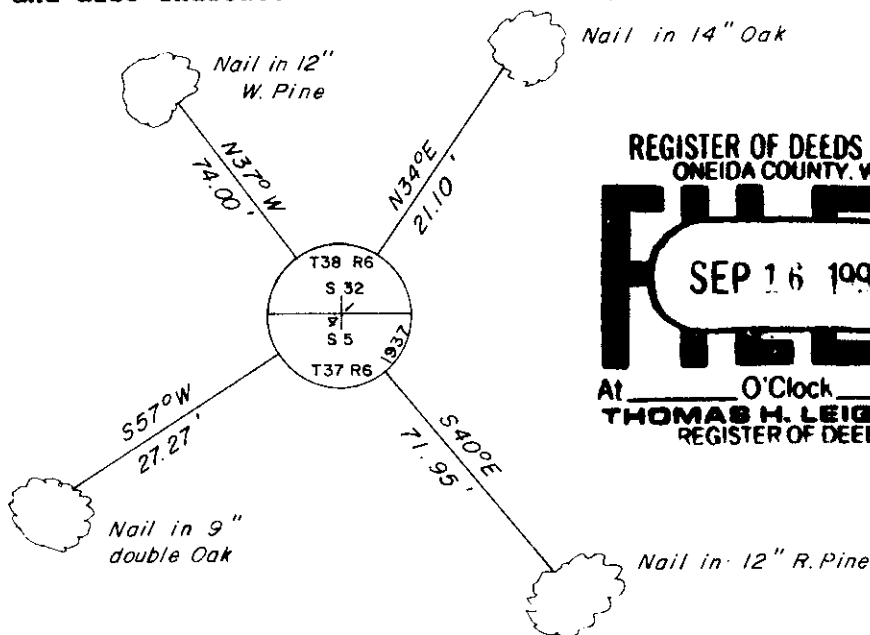
(b) HISTORY OF ORIGINAL CORNER ESTABLISHMENT
 Original Surveyor: Alfred Millard Original B.T.'S
 Date of Survey: Commenced September, 1860 Y.Pine 12 S17°W, 44 lks.
 Completed September, 1860 Y.Fine 16 N58°W, 37 lks.

(b)(f)(g)(h) Description of monument found at this corner and if it was accepted, state all evidence (material, testimonial, occupational, plats, records, other monuments) used as a basis for accepting. If not accepted or if nothing was found, state evidence used as basis for establishing location. If reestablished through lost corner proportionate methods, indicate all monuments, distances and directions used to establish. Indicate type of monument and sign post found or set.

December 1, 1936: V.M. Maine's notes: 81.21 fell 1.01 South of orig. gov't. 1/4 stk. between Secs. 5&32. Identified by scribed cedar post & stub of orig. BT viz: Y.P. 12 S17°W, .44, found hole of NW tree Y.P. 16 N58°W, .37, H.C. Hall's BT viz: Blk. Oak 7 S34-3/4°W, .81, set official corner.

August 25, 1991: I found and accepted an iron post, 2-1/2" dia. with 2-1/2" dia. brass cap 30" above the ground and marked as shown. I found the following witnesses: remains of Oak stump S40°W, 53.6 feet. I established the following witnesses: set nail in R.Pine 12" S40°E, 71.95 feet; set nail in double Oak 9" S57°W, 27.27 feet; set nail in W.Pine 12" N37°W, 74.00 feet; set nail in Oak 14" N34°E, 21.10 feet; set plastic sign post Northwest, 1.5 feet. The above listed bearing trees were not blazed.

(c)(d)(e) Plan view of corner with ties to at least 4 witness monuments. If in disagreement with previously established corner, show the distances between the two corners and also indicate the ties to the disputed.



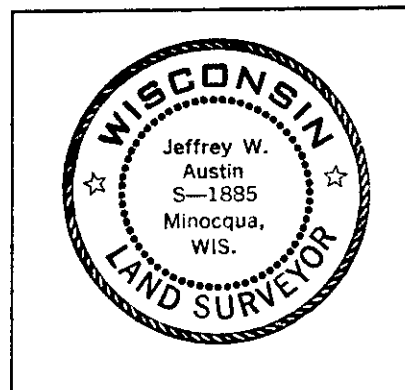
REGISTER OF DEEDS OFFICE
 ONEIDA COUNTY, WIS
FILED
 SEP 16 1991
 At _____ O'Clock _____ M
THOMAS H. LEIGHTON
 REGISTER OF DEEDS



Not to Scale

(i) I, Jeffrey W. Austin, Registered Land Surveyor hereby certify that the corner location on this record was determined by me or under my direction and control and that this U.S. Public Land Survey Monument Record is correct and complete to the best of my knowledge and belief.

Signature [Handwritten Signature] Date 8-25-1991



INDEX NO. A-7

U.S. PUBLIC LAND SURVEY MONUMENT RECORD

REGISTER OF DEEDS OFFICE
ONEIDA COUNTY
FILED

Note: This form is intended and designed to fulfill all requirements of the Wisconsin Administrative Code, Chapter A-E 7.08 U.S. Public Land Monument Record (3)(a)(b)(c)(d)(e)(f)(g)(h)(i). An additional sheet may be added if necessary to conform with said requirements.

JUN 13 2018

KYLE J. FRANSON
REGISTER OF DEEDS

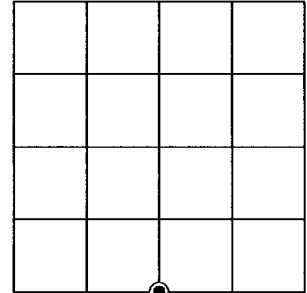
(a) CORNER LOCATION:

South Quarter Corner of Section 32
Township 38 North
Range 6 East
Town Hazelhurst
County of Oneida

North:
East:
Datum:
GNSS Method:
GNSS Control:

(RECORDING AREA)

SECTION 32



(b) HISTORY OF ORIGINAL CORNER ESTABLISHMENT

Original Surveyor:
Date of Survey: Commenced
Completed
Original B.T.'S

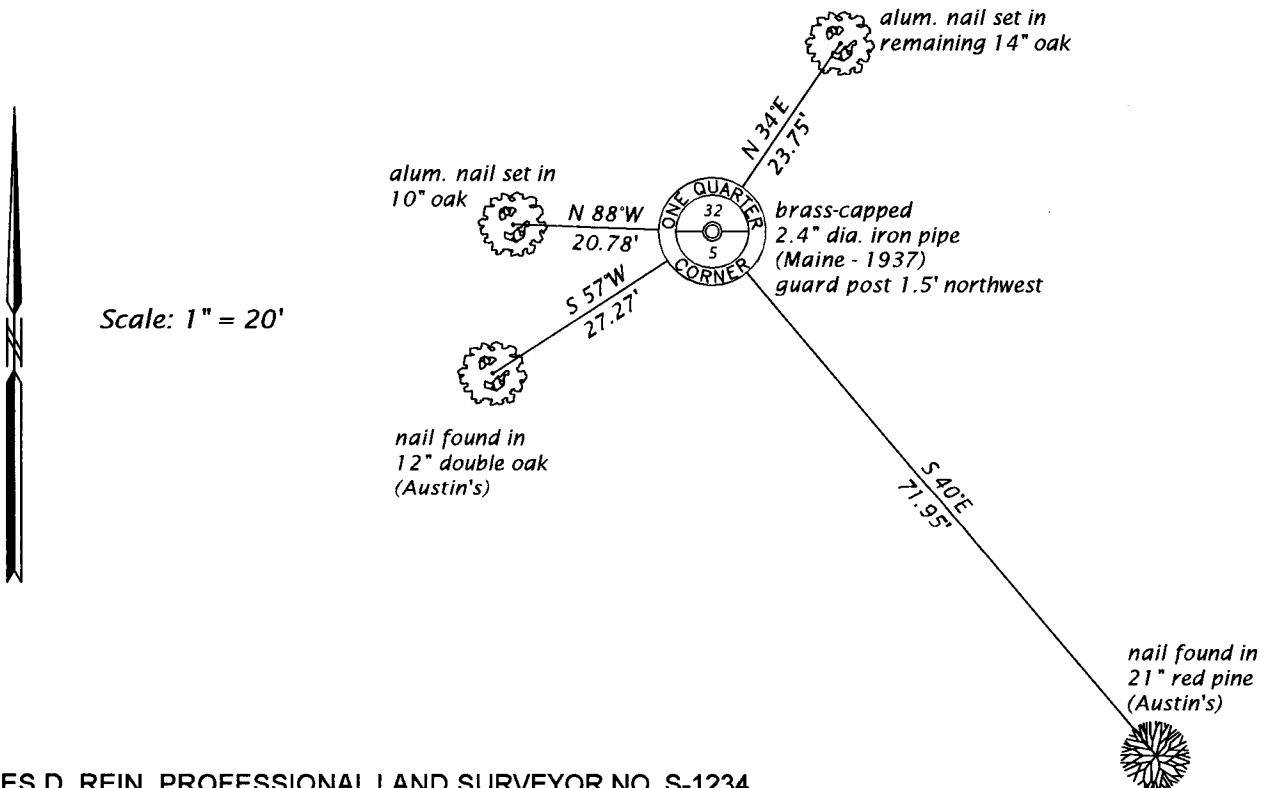
SEE PREVIOUS U.S.P.L.S. MONUMENT RECORD DATED AUGUST 25, 1991.

(f)(g)(h) DESCRIPTION OF MONUMENT FOUND AT THIS CORNER AND IF IT WAS ACCEPTED, STATE ALL EVIDENCE (MATERIAL, TESTIMONIAL, OCCUPATIONAL, PLATS, RECORD, OTHER MONUMENTS) USED AS A BASIS FOR ESTABLISHING LOCATION. IF NOT ACCEPTED OR IF NOTHING WAS FOUND, STATE EVIDENCE USED AS BASIS FOR ESTABLISHING LOCATION. IF REESTABLISHED THROUGH LOST CORNER PROPORTIONATE METHODS, INDICATE ALL MONUMENTS, DISTANCES AND DIRECTIONS USED TO ESTABLISH. INDICATE TYPE OF MONUMENT AND SIGN POST FOUND OR SET.

This is a perpetuation of a previous U.S.P.L.S. Monument Record by Jeffrey W. Austin, RLS, dated August 25, 1991, and filed in the office of the Oneida County Register of Deeds. A complete history of the corner can be found on the previous monument record. I accept the previous location as a true and faithful perpetuation or reestablishment of the original corner location and further perpetuate it as follows.

May 14, 2018, I, James D. Rein, P.L.S. No. S-1234, found and accepted the brass-capped iron pipe set by Maine and used by Austin in 1991. Austin's northwesterly white pine is now gone and his northeasterly oak was actually a double oak and the tree Austin used is now cut down. We set a new nail in the remaining tree - see below for updated witnesses.

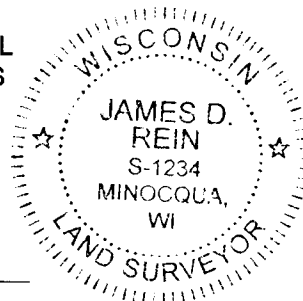
(c)(d)(e) PLAN VIEW OF CORNER WITH TIES TO AT LEAST 4 WITNESS MONUMENTS. IF IN DISAGREEMENT WITH PREVIOUSLY ESTABLISHED CORNER, SHOW THE DISTANCE BETWEEN THE TWO CORNERS AND ALSO INDICATE THE TIES TO THE DISPUTED CORNER.



(i) I, JAMES D. REIN, PROFESSIONAL LAND SURVEYOR NO. S-1234 HEREBY CERTIFY THAT THE CORNER LOCATION ON THIS RECORD WAS DETERMINED BY ME OR UNDER MY DIRECTION AND CONTROL AND THAT THIS U.S. PUBLIC LAND SURVEY MONUMENT RECORD IS CORRECT AND COMPLETE TO THE BEST OF MY KNOWLEDGE AND BELIEF.

James D. Rein
SIGNATURE

6-07-18
DATE



INDEX NO. Z-7
3806320020