

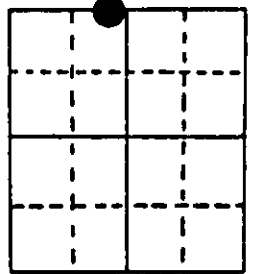
U.S. PUBLIC LAND SURVEY MONUMENT RECORD

Note: This form is intended and designed to fulfill all requirements of Wisconsin Administrative Code, Chapter A-E 7.08 U.S. Public Land Survey Monument Record (3) (a) (b) (c) (d) (e) (f) (g) (h) (i). An additional sheet may be added if necessary to conform with said requirements.

(a) Corner location: Township 37 North
 Range 6 East/West

Town/City/Village Cassian

County Oneida



Section 5

(b) (f) (g) (h) Description of monument found at this corner and if it was accepted, state all evidence (material, testimonial, occupational, plats, records, other monuments) used as a basis for accepting. If not accepted or if nothing was found, state evidence used as basis for establishing location. If reestablished through lost corner proportionate methods, indicate all monuments, distances and directions used to establish. Indicate type of monument found or set and sign post.

1860 - Alfred Millard established this corner on East shore of lake and set a wood post with two BTs:
 14" White Pine, N50°E, 34 Links (22.44') 20" White Pine, S42°W, 17 Links (11.22')

12/1/1936 - V. Maine found remains of both original BTs - 20" down, 14" a cut off stump. He set an Oak stake with two new references:
 24" White Pine Stump, East, 20 Links (13.2')
 10" White Pine, S51°W, 107½ Links (70.95')

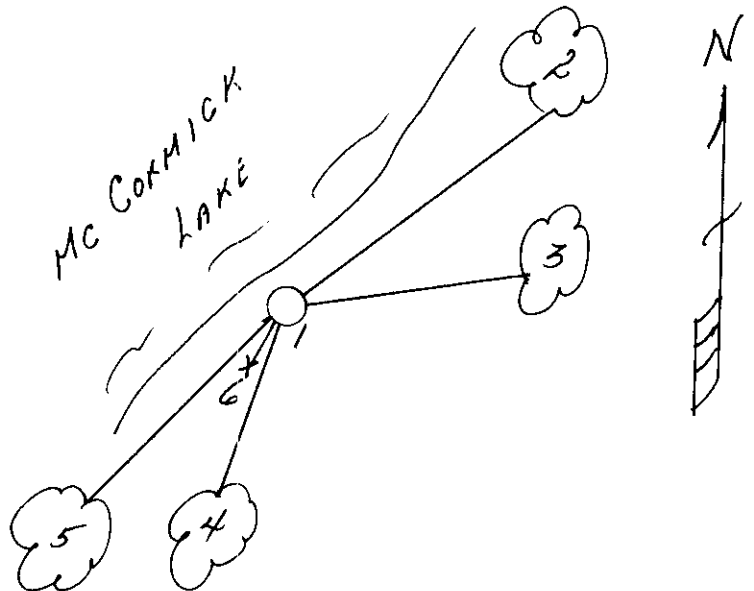
10/25/1995 - Milo E. Stefan found a 1" iron pipe along side point of Maine's Oak post with 24" Pine Stump East 13.2', and Maines 10" White Pine tipped out and leaning into lake.

We set a 2" x 30" aluminum monument along side Maine's post point, made four new BTs and set a plastic sign post.

(c) (d) (e) Plan view of corner with ties to at least 4 witness monuments. If in disagreement with previously established corner, show the distances between the two corners and also indicate the ties to the disputed corner.

- 1) 2" x 30" aluminum monument with 1" iron pipe and Oak post point along side.
- 2) 6" Red Maple, N60°E, 31.23'.
- 3) 6" Red Oak, N80°E, 27.13'.
- 4) 5" White Pine, S17°W, 15.45'.
- 5) 12" Red Oak, S50°W, 57.34'.
- 6) Plastic Sign Post, SW, 1.3'.

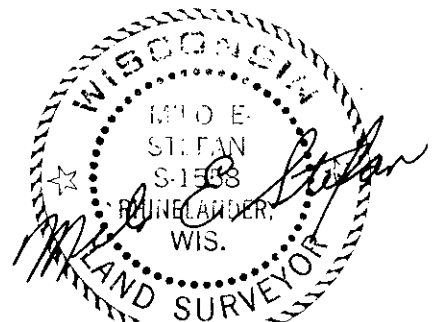
Distances to nail in side of BTs.
 Stump blazes scribed "BT".
 BT tags placed on face of each BT.



(i) I, Milo E. Stefan
 (type or print name) certify that the corner location on this record was determined by me or under my direction and control and that this U.S. Public Land Survey Monument Record is correct and complete to the best of my knowledge and belief.

Milo E. Stefan
 Signature

December 17, 1995
 Date



3806320026
 Stamp

U.S. PUBLIC LAND SURVEY MONUMENT RECORD

REGISTER OF DEEDS OFFICE
ONEIDA COUNTY
FILED

JUN 13 2018

Note: This form is intended and designed to fulfill all requirements of the Wisconsin Administrative Code, Chapter A-E 7.08 U.S. Public Land Monument Record (3)(a)(b)(c)(d)(e)(f)(g)(h)(i). An additional sheet may be added if necessary to conform with said requirements.

KYLE J. FRANSON
REGISTER OF DEEDS

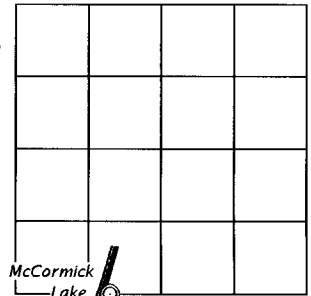
(a) CORNER LOCATION:

Witness Meander Corner of Section 32
Township 38 North
Range 6 East
Town Hazelhurst
County of Oneida

North:
East:
Datum:
GNSS Method:
GNSS Control:

(RECORDING AREA)

SECTION 32



(b) HISTORY OF ORIGINAL CORNER ESTABLISHMENT

Original Surveyor:
Date of Survey: Commenced
Completed
Original B.T.'S

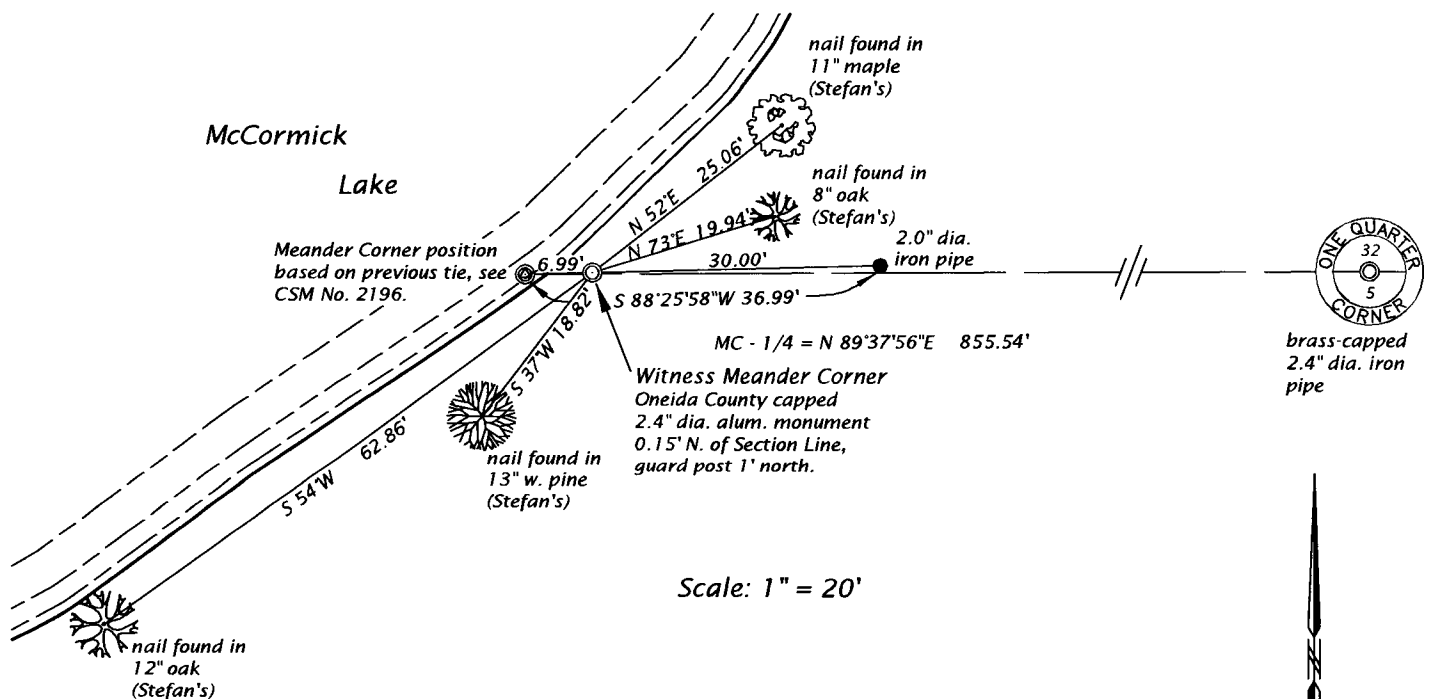
SEE PREVIOUS U.S.P.L.S. MONUMENT RECORD DATED DECEMBER 17, 1995.

(f)(g)(h) DESCRIPTION OF MONUMENT FOUND AT THIS CORNER AND IF IT WAS ACCEPTED, STATE ALL EVIDENCE (MATERIAL, TESTIMONIAL, OCCUPATIONAL, PLATS, RECORD, OTHER MONUMENTS) USED AS A BASIS FOR ESTABLISHING LOCATION. IF NOT ACCEPTED OR IF NOTHING WAS FOUND, STATE EVIDENCE USED AS BASIS FOR ESTABLISHING LOCATION. IF REESTABLISHED THROUGH LOST CORNER PROPORTIONATE METHODS, INDICATE ALL MONUMENTS, DISTANCES AND DIRECTIONS USED TO ESTABLISH. INDICATE TYPE OF MONUMENT AND SIGN POST FOUND OR SET.

This is a perpetuation of a previous U.S.P.L.S. Monument Record by Milo E. Stefan, RLS, dated December 17, 1995, and filed in the office of the Oneida County Register of Deeds. A complete history of the corner can be found on the previous monument record. I accept the previous location as a true and faithful perpetuation or reestablishment of the original corner location and further perpetuate it as follows.

June 1, 2018, I, James D. Rein, P.L.S. No. S-1234, found the aluminum monument set by Stefan laid over on the bottom of McCormack Lake. We reset the monument back on high ground, on line with a 2.0" dia. (od) iron pipe previously found in place. See Oneida County Certified Survey Map No. 2196. We stamped the monument "WIT. MC" - see below for updated witnesses.

(c)(d)(e) PLAN VIEW OF CORNER WITH TIES TO AT LEAST 4 WITNESS MONUMENTS. IF IN DISAGREEMENT WITH PREVIOUSLY ESTABLISHED CORNER, SHOW THE DISTANCE BETWEEN THE TWO CORNERS AND ALSO INDICATE THE TIES TO THE DISPUTED CORNER.



(i) I, JAMES D. REIN, PROFESSIONAL LAND SURVEYOR NO. S-1234 HEREBY CERTIFY THAT THE CORNER LOCATION ON THIS RECORD WAS DETERMINED BY ME OR UNDER MY DIRECTION AND CONTROL AND THAT THIS U.S. PUBLIC LAND SURVEY MONUMENT RECORD IS CORRECT AND COMPLETE TO THE BEST OF MY KNOWLEDGE AND BELIEF.

[Handwritten Signature]

6-07-18
DATE



INDEX NO. Z 6-7
3806320026