

MAR 07 2017

AT \_\_\_\_\_ O'CLOCK \_\_\_\_\_ M  
KYLE J. FRANSON  
REGISTER OF DEEDS

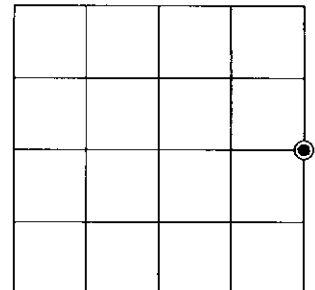
# U.S. PUBLIC LAND SURVEY MONUMENT RECORD

Note: This form is intended and designed to fulfill all requirements of the Wisconsin Administrative Code, Chapter A-E 7.08 U.S. Public Land Monument Record (3)(a)(b)(c)(d)(e)(f)(g)(h)(i). An additional sheet may be added if necessary to conform with said requirements.

(a) CORNER LOCATION: WISCRS - Oneida County  
East Quarter Corner of Section 32 North: 201835.503 USft  
Township 38 North East: 176098.984 USft  
Range 6 East Datum: NAD 1983(2011)  
Town of Hazelhurst GNSS Method: RTK - direct  
County of Oneida GNSS Control: WISCORS VRS

(RECORDING AREA)

SECTION 32



(b) HISTORY OF ORIGINAL CORNER ESTABLISHMENT

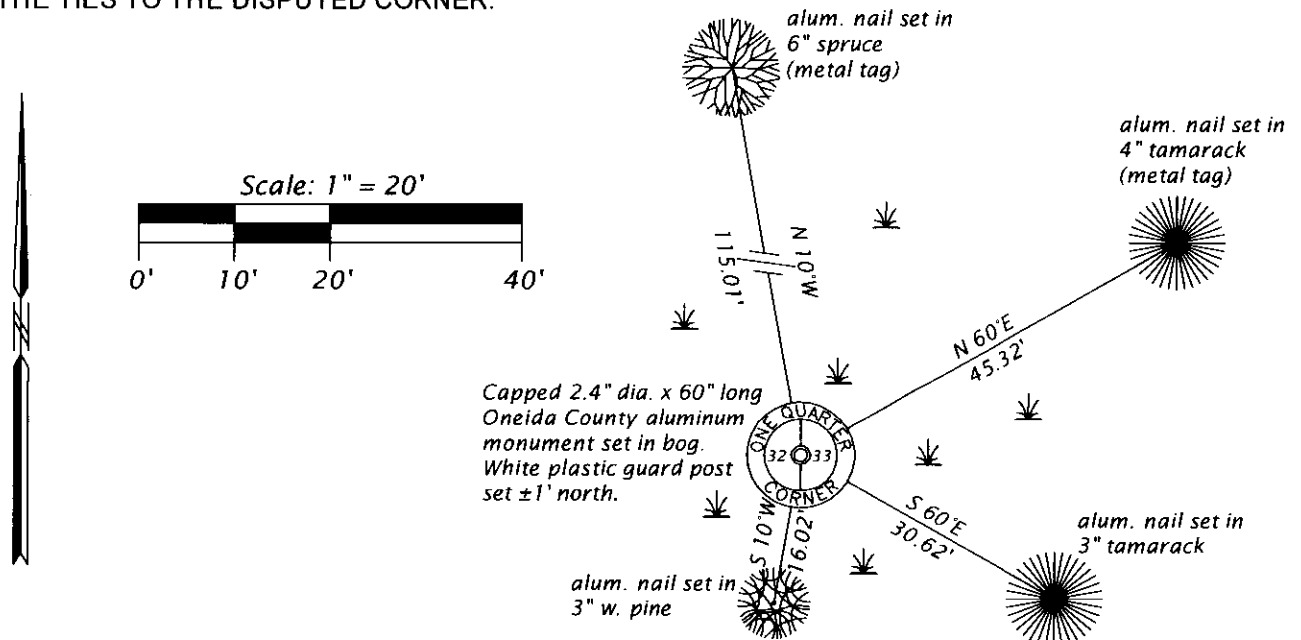
Original Surveyor: Alexander Anderson  
Date of Survey: Commenced September 28, 1863  
Completed October 5, 1863  
Original B.T.'S: Spruce 7" S 37°W 5 lks.  
Spruce 6" S 80°E 50 lks.

(f)(g)(h) DESCRIPTION OF MONUMENT FOUND AT THIS CORNER AND IF IT WAS ACCEPTED, STATE ALL EVIDENCE (MATERIAL, TESTIMONIAL, OCCUPATIONAL, PLATS, RECORDS, OTHER MONUMENTS) USED AS A BASIS FOR ESTABLISHING LOCATION. IF NOT ACCEPTED OR IF NOTHING WAS FOUND, STATE EVIDENCE USED AS BASIS FOR ESTABLISHING LOCATION. IF REESTABLISHED THROUGH LOST CORNER PROPORTIONATE METHODS, INDICATE ALL MONUMENTS, DISTANCES AND DIRECTIONS USED TO ESTABLISH. INDICATE TYPE OF MONUMENT AND SIGN POST FOUND OR SET.

1964 - While surveying in Sections 29, 31 & 32, T38N, R6E, William H. Stuth, set the E 1/4 Corner by single proportion between the northeast and southeast section corners. He set a 2" dia. iron pipe at the corner position and made the following BT's.: 5" Spruce, N 6°E, 3.9' and 6" Spruce, S 80°E, 7.0'. He also set the north sixteenth corner equal distance and on line with the northeast section corner. See Oneida County Surveyor's File No. B1318.

2017 - February 8, 2017, James D. Rein, found and accepted Stuth's 2.5" dia. iron pipe at the E 1/4 Corner position. We did not recover Stuth's Spruce BT's. We did recover his north sixteenth corner, a 2.5" dia. iron pipe. This corner is very close to line and mid-way with the northeast section corner. Distance from E 1/4 to N 1/16 = 1333.10', distance from the N 1/16 to the NE Sec. Cor. = 1333.75'. We replaced the 2.5" dia. iron pipe with a capped 2.4" dia. x 60" long Oneida County aluminum monument, up 4" in bog. See below for reference ties.

(c)(d)(e) PLAN VIEW OF CORNER WITH TIES TO AT LEAST 4 WITNESS MONUMENTS. IF IN DISAGREEMENT WITH PREVIOUSLY ESTABLISHED CORNER, SHOW THE DISTANCE BETWEEN THE TWO CORNERS AND ALSO INDICATE THE TIES TO THE DISPUTED CORNER.



(i) I, JAMES D. REIN, PROFESSIONAL LAND SURVEYOR NO. S-1234 HEREBY CERTIFY THAT THE CORNER LOCATION ON THIS RECORD WAS DETERMINED BY ME OR UNDER MY DIRECTION AND CONTROL AND THAT THIS U.S. PUBLIC LAND SURVEY MONUMENT RECORD IS CORRECT AND COMPLETE TO THE BEST OF MY KNOWLEDGE AND BELIEF.

*[Handwritten Signature]*  
SIGNATURE

3-03-17  
DATE



INDEX NO. X9

3806 32 2000