

**U.S. PUBLIC LAND SURVEY MONUMENT RECORD**

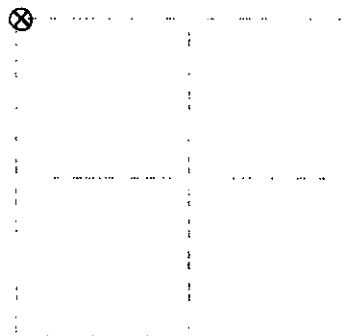
Note: This form is intended and designed to fulfill all requirements of Wisconsin Administrative Code, Chapter A-E 7.08 U.S. Public Land Survey Monument Record. An additional sheet may be added if necessary to conform with said requirements.

(a) Corner location: Township 37 North

Range 6 East

Town of Cassian

Oneida County, Wisconsin



**Section 3**

Description of monument found at this corner and if it was accepted, state all evidence material, testimonial, occupational, plats, records, other monuments used as a basis for accepting. If not accepted or if nothing was found, state evidence used as basis for establishing location. If reestablished through lost corner proportionate methods, indicate all monuments, distances and directions used to establish. Indicate type of monument found or set and sign post.

September, 1860: Alfred Millard, US deputy surveyor notes the following: 80.00 set post at corner to sections 3,4,33&34: w.pine 12 N34W, 28 1/2; w.pine to S39E, 18 1/2; w.pine to S76W, 45 lvs.

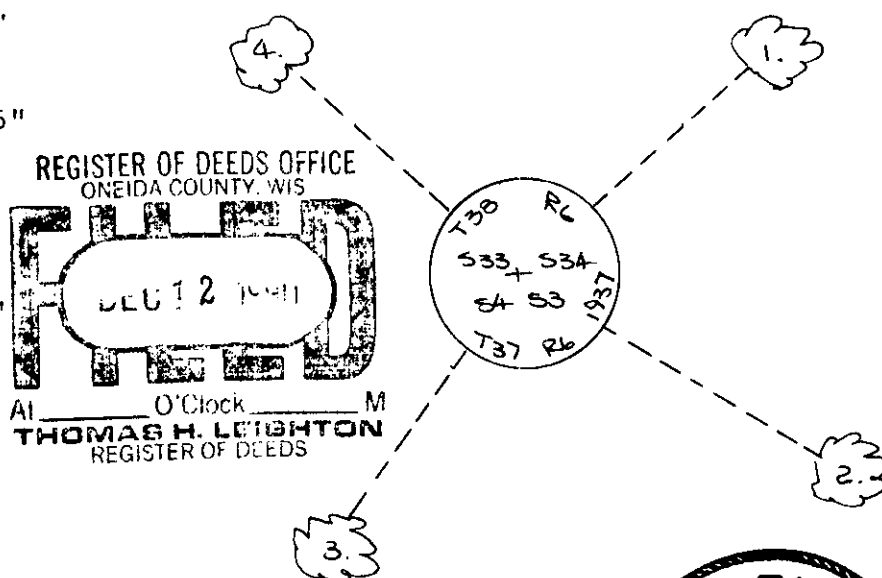
December 2, 1876, Maine page 151 notes the following: 40.00 set 1/2-3/4 north of orig. govt. cor. common to secs. 3-3-33-34 found part of old set. Orig. 27 stps. plain y.p. w.p. 12 N34W, 18; y.p. to S39E, 18; y.p. to S76W, 45; nearly gone: set efface cor. marked 57es y.p. stp. 5 N8W, 12-1/2; w.p. 2-1/2 N5E, 167; y.p. 3 S30E, 151-1/2; y.p. stp. 9 S55E, 119-3/4.

November 25, 1930: I found and accepted a 2-1/2" dia. iron post with brass cap 24" above ground marked as shown below. I found the following witnesses: scribed pine stump (maine) S57E, 12.8 feet; old pine stump (millard) S34E, 12.5 feet; old pine stump (millard) S73W, 30.0 feet; scribed pine stump (maine) N80W, 17.5 feet. I established the following witnesses: set nail in w.pine 14" N48E, 63.15 feet; set nail in balsam 6" S59E, 36.27 feet; set nail in balsam 6" S35W, 30.31 feet; set nail in w.pine 11" N48W, 53.83 feet. Note - Maine's y.p. stp. at N8W is actually found at N80W.

Outline Plan view of corner with ties to at least four witness monuments. If in disagreement with previously established corner, show the distances between the two corners and also indicate the ties to the disputed corner.

1. nail in w.pine 14" N48E, 63.15 feet.
2. nail in b.spruce 6" S59E, 36.27 feet.
3. nail in balsam 6" S35W, 30.31 feet.
4. nail in w.pine 11" N48W, 53.83 feet.

(not to scale)



By Jeffrey W. Austin, Registered Land Surveyor 9-1885 certify that the corner location on this record was determined by me or under my direction and control and that this U.S. Public Land Survey Monument Record is correct and complete to the best of my knowledge and belief.

*Jeffrey W. Austin*

NOVEMBER 30, 1990



Index no. A-13