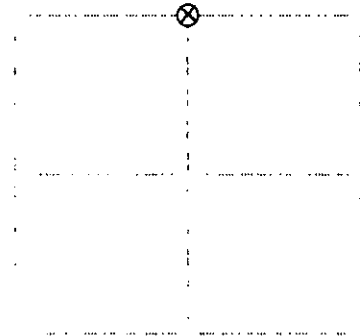


U.S. PUBLIC LAND SURVEY MONUMENT RECORD

Note: This form is intended and designed to fulfill all requirements of Wisconsin Administrative Code, Chapter A-E 7.08 U.S. Public Land Survey Monument Record (31.1a) b (3)(d) (e) (f) (g) (h) (i). An additional sheet may be added if necessary to conform with said requirements.

(a) Corner location: Township 37 North
 Range 6 East
 Town of Cassian
 Oneida County, Wisconsin



Section 4

Description of monument found at this corner and if it was accepted state all evidence (material, testimonial, occupational, plats, records, other monuments) used as a basis for accepting. If not accepted or if nothing was found, state evidence used as basis for establishing location. If reestablished through lost corner proportionate methods, indicate all monuments, distances and directions used to establish. Indicate type of monument found or set and sign post.

September, 1860: Alfred Willard, US deputy surveyor notes the following: 40.00 set 1/4 section post: aspen 4 N34W, 11 lks.; aspen 12 S32E, 48 lks.

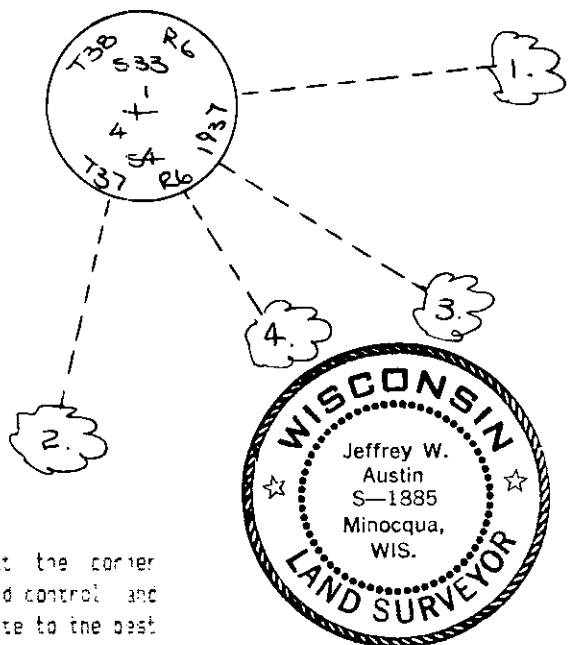
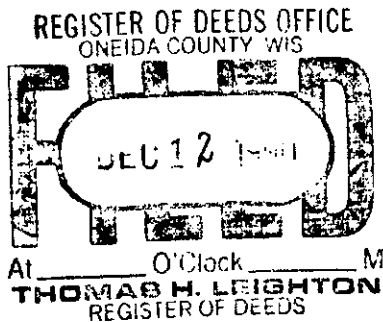
December 2, 1975: Maine page 152 notes the following: 40.04-1/2 feet 1/32-1/4 north of orig. govt. 1/4 corner between secs. 4&33 found the old stake hole, part of old stake rotted to shreds. Found where orig. aspens stood root holes and wood viz: aspen 4 N34W, 11; aspen 12 S32E, 48; sec official corner and marked BTs viz: w.p. 10 S14W, .98; w.p. 10 N72E, .88-1/4.

November 25, 1990: I found and accepted a 2-1/2" dia. iron post with brass cap 28" above ground marked as shown below. I found the following witnesses: w.pine stump N75E, 54.0 feet; set nail in w.pine (maine) 26" N64E, 57.60 feet; set nail in w.pine (maine) 28" S13W, 65.00 feet. I established the following witnesses: set nail in w.pine 9" S58E, 68.70 feet; set nail in w.pine 9" S32E, 68.40 feet; set plastic sign post north 1 foot. Note - Maine's w.p. at N72E is actually found at N84E. A w.pine exp. exists at N75E, the bearing may have been taken to the wrong tree.

to former Plan view of corner with ties to at least four witness monuments. If in disagreement with previously established corner, show the distances between the two corners and also indicate the ties to the disputed corner.

1. nail in w.pine 26" N84E, 57.60 feet.
2. nail in w.pine 28" S13W, 65.00 feet.
3. nail in w.pine 9" S58E, 68.70 feet.
4. nail in w.pine 9" S32E, 68.40 feet.

(not to scale)



I, Jeffrey W. Austin, Registered Land Surveyor S-1885 certify that the corner location on this record was determined by me or under my direction and control and that this U.S. Public Land Survey Monument Record is correct and complete to the best of my knowledge and belief.

[Handwritten Signature]
 November 30, 1990

Index no. A-11

3806330020