

U.S. PUBLIC LAND SURVEY MONUMENT RECORD

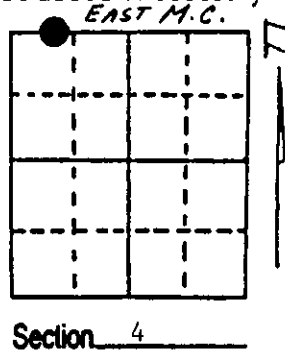
Note: This form is intended and designed to fulfill all requirements of Wisconsin Administrative Code, Chapter A-E 7.08 U.S. Public Land Survey Monument Record (3) (a) (b) (c) (d) (e) (f) (g) (h) (i). An additional sheet may be added if necessary to conform with said requirements.

(a) Corner location: Township 37 North

Range 6 East/West

Town/City/Village Cassian

County Oneida



(b) (f) (g) (h) Description of monument found at this corner and if it was accepted, state all evidence (material, testimonial, occupational, plats, records, other monuments) used as a basis for accepting. If not accepted or if nothing was found, state evidence used as basis for establishing location. If reestablished through lost corner proportionate methods, indicate all monuments, distances and directions used to establish. Indicate type of monument found or set and sign post.

1860 - Alfred Millard set a post for the Meander Corner on the East shore of a lake with two BTs:

- 14" White Pine, N70°E, 32 Links (20.12')
- 14" Red Pine, S37°W, 15 Links (9.90')

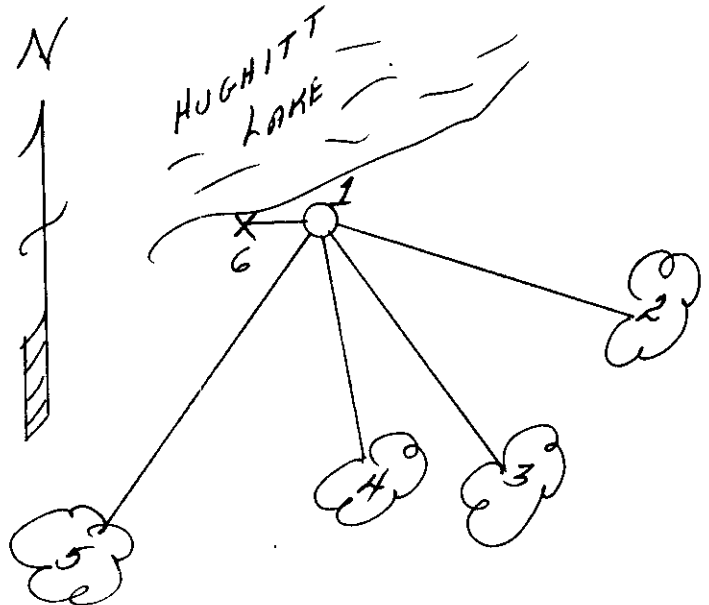
12/3/1936 - Maine found both BT and rescribed one of them, but did not set a new post.

1/22/1996 - Milo E. Stefan measured distance from Section Corner Westerly (A-9) East to W 1/16. No original BT remains could be located to fit the proportioned position of this corner. A local BT (20" Red Pine, N88°E, 36.2') is scribed. As species, distance and bearing do not correspond, we positioned this corner Westerly of the W 1/16 at proportional distance (ours/Maines) and placed an aluminum monument. See reverse of this sheet for measured data.

(c) (d) (e) Plan view of corner with ties to at least 4 witness monuments. If in disagreement with previously established corner, show the distances between the two corners and also indicate the ties to the disputed corner.

- 1) 2" x 30" Aluminum Monument/
Mound of Stone
- 2) 20" Red Pine, N88°E, 36.16'
- 3) 3" Black Spruce, S55°E, 47.75'
- 4) 6" Black Spruce, S13°E, 25.52'
- 5) 6" White Pine, S38°W, 18.05'
- 6) Plastic Sign Post, West, 1.0'

Distances to nail in side of BTs.
Stump blaze scribed "BT".



(i) I, Milo E. Stefan
(type or print name) certify that the corner location on this record was determined by me or under my direction and control and that this U.S. Public Land Survey Monument Record is correct and complete to the best of my knowledge and belief.

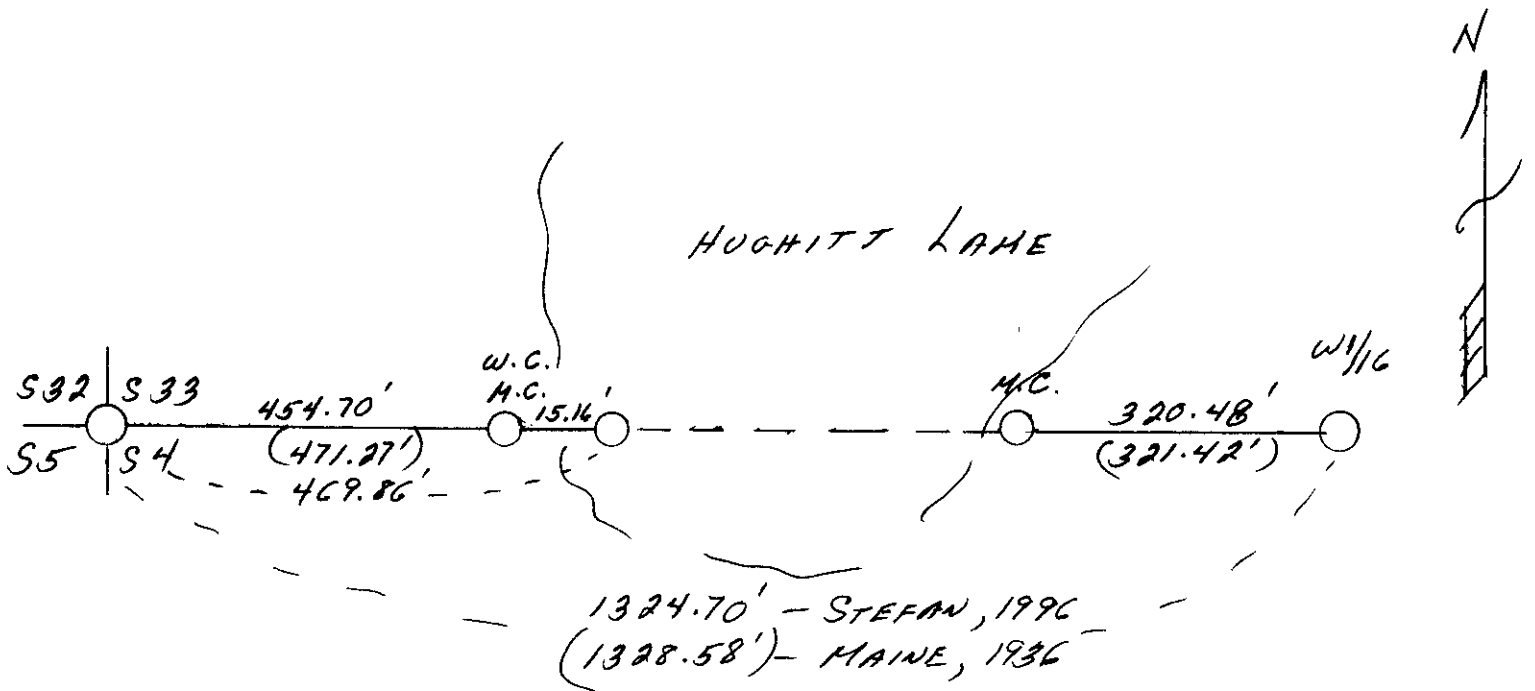
Milo E. Stefan
Signature

December 9, 1996
Date



Index No. A-9, 10
- East M.C.

Stamp
3806330032



REGISTER OF DEEDS OFFICE
 ONEIDA COUNTY, WIS
FILED
 JAN - 3 1997
 At _____ O'Clock _____ M
 THOMAS H. LEIGHTON
 REGISTER OF DEEDS