

U.S. PUBLIC LAND SURVEY MONUMENT RECORD

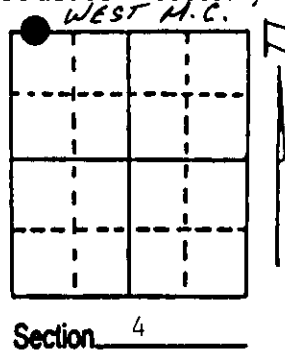
Note: This form is intended and designed to fulfill all requirements of Wisconsin Administrative Code, Chapter A-E 7.08 U.S. Public Land Survey Monument Record (3) (a) (b) (c) (d) (e) (f) (g) (h) (i). An additional sheet may be added if necessary to conform with said requirements.

(a) Corner location: Township 37 North

Range 6 East/West

Town/City/Village Cassian

County Oneida



(b) (f) (g) (h) Description of monument found at this corner and if it was accepted, state all evidence (material, testimonial, occupational, plats, records, other monuments) used as a basis for accepting. If not accepted or if nothing was found, state evidence used as basis for establishing location. If reestablished through lost corner proportionate methods, indicate all monuments, distances and directions used to establish. Indicate type of monument found or set and sign post.

1860 - Alfred Millard set a post for the Meander Corner on the West shore of a lake with one BT: (7.14 chains West to Section Corner)
5" Tamarack, S81°W, 56 Links

12/3/1936 - Maine found original Tamarack BT and set a new oak post with two new BTs:
14" White Pine, S86°W, 113 1/2 Links (74.91')
14" Red Pine, N59°W, 160 1/2 Links (105.93')
7.14 Chains West to Section Corner.

7/1996 - Milo E. Stefan found: 16" Red Pine, N59°W, scribed at stump blaze
26" White Pine Stump, S86°W, scribing on lower part of blaze

Could not rectify bearings and distances this day. Would have to measure East from Section Corner or West from East M.C. or W 1/16 to the East.

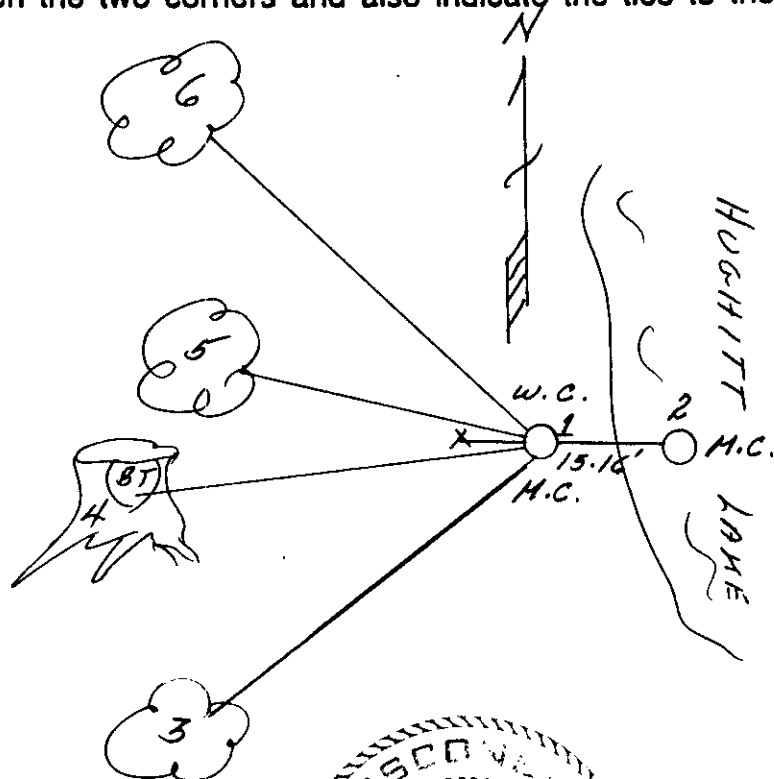
11/22/1996 - Milo E. Stefan measured distance from Section Corner to W 1/16 (A-9 to A-10). See back side for measured data. We set a 2" x 30" aluminum monument as a Witness Corner as the M.C. now falls in the lake.

(c) (d) (e) Plan view of corner with ties to at least 4 witness monuments. If in disagreement with previously established corner, show the distances between the two corners and also indicate the ties to the disputed corner.

- 1) 2" x 30" Aluminum Monument
- 2) Not monumented
- 3) 3" Red Oak, S59°W, 96.86'
- *4) 26" White Pine Stump, S86°W, 76.05'
- 5) 13" White Pine, N75°W, 33.22'
- *6) 16" Red Pine, N59°W, 89.00'
- 7) Plastic Sign Post, West, 1.0'

*Maines BTs - 1937

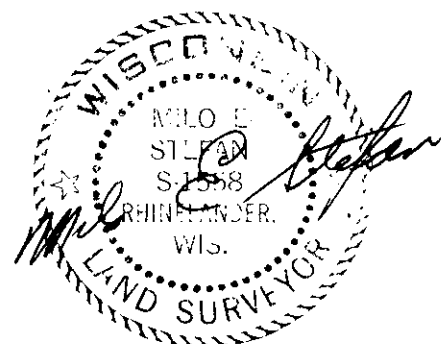
Distances to nail in side of tree.
Stump blaze scribed "BT".



(i) I, Milo E. Stefan
(type or print name) certify that the corner location on this record was determined by me or under my direction and control and that this U.S. Public Land Survey Monument Record is correct and complete to the best of my knowledge and belief.

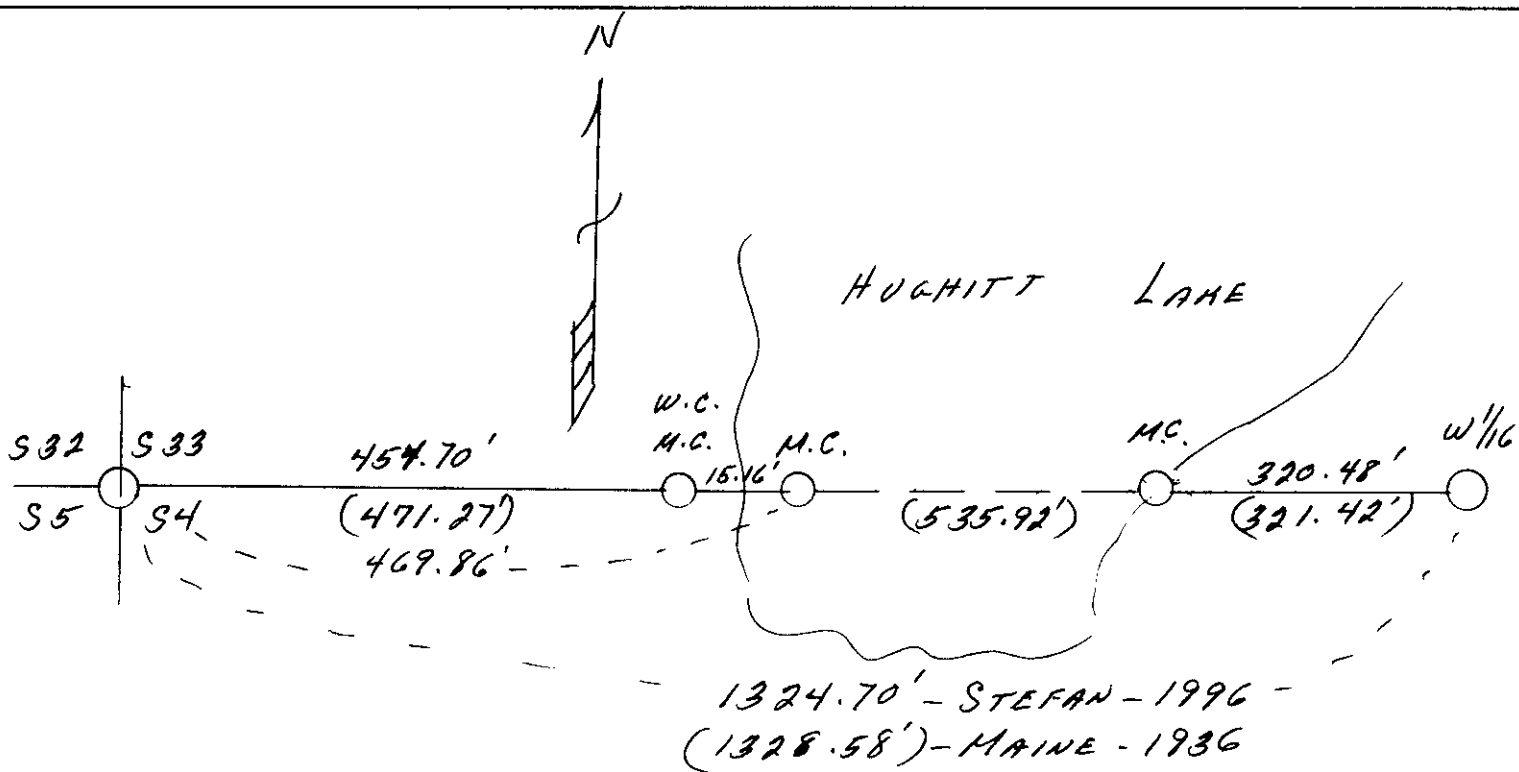
Milo E. Stefan
Signature

December 9, 1996
Date



3806330036
Stamp

Index No. A-9, 10
- West M.C.



REGISTER OF DEEDS OFFICE
 ONEIDA COUNTY, WIS.
FILED
 'AN - 1996'
 At _____ Clerk _____ M
 THOMAS H. LEIGHTON
 REGISTER OF DEEDS