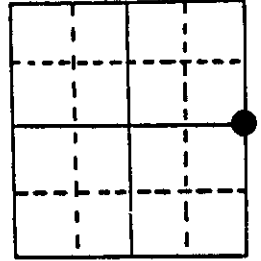


U.S. PUBLIC LAND SURVEY MONUMENT RECORD

Note: This form is intended and designed to fulfill all requirements of Wisconsin Administrative Code, Chapter A-E 5.02, U.S. Public Land Survey Monument Record (3) (a) (b) (c) (d) (e) (f) (g) (h) (i). An additional sheet may be added if necessary to conform with said requirements.

(a) Corner location: Township 38 North
 Range 6 East

Town HAZELHURST
 County ONEIDA

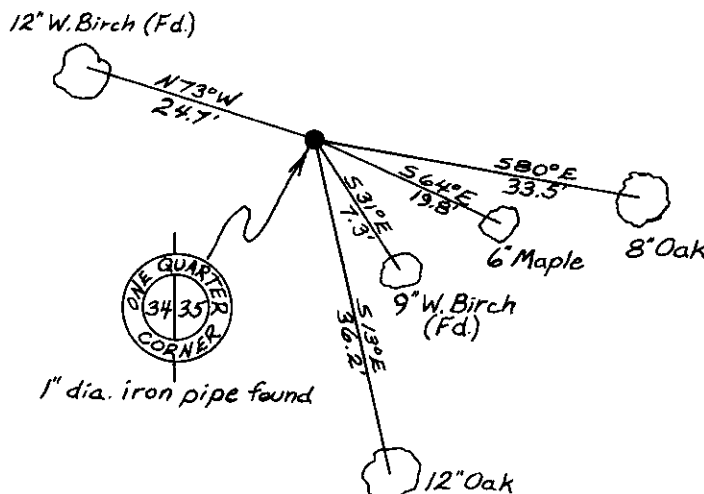


Section 34

(b) (f) (g) (h) Description of monument found at this corner and if it was accepted, state all evidence (material, testimonial, occupational, plats, records, other monuments) used as a basis for accepting. If not accepted or if nothing was found, state evidence used as basis for establishing location. If reestablished through lost corner proportionate methods, indicate all monuments, distances and directions used to establish.

- Sept. 28, 1863 - Alexander Anderson, deputy surveyor, set original section post. Original bearing trees: Yellow Pine 12" S5°E, 5 links and another Yellow Pine 16", N78°W, 52 links.
- Oct. 1974 - Inman Engineering, accepts and uses 1-1/2" dia. iron pipe found in Section subdivision of Section 34.
- June 23, 1983 - Jerome N. Kraemer found 1" diameter iron pipe protruding up 12" above ground level. 4" x 4" square cedar post scribed 1/4 S34 S35. Found existing bearing trees:
 12" White Birch N73°W, 24.7 feet (scribed)
 9" White Birch S31°E, 7.3 feet (0-1 tag and scribed)
 Made three new bearing trees as shown in plan view below.

(c) (d) (e) Plan view of corner with ties to at least 4 witness monuments. If in disagreement with previously established corner, show the distances between the two corners and also indicate the ties to the disputed corner.



(i) I, JEROME N. KRAEMER
 (type or print name) certify that the corner location on this record was determined by me or under my direction and control and that this U.S. Public Land Survey Monument Record is correct and complete to the best of my knowledge and belief.



Jerome N. Kraemer August 8th, 1983
 Signature Date

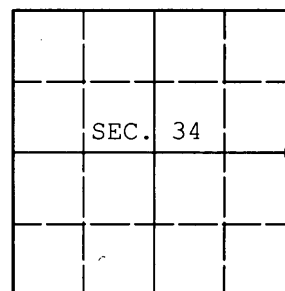
Index No. X-17

380634000

U.S. PUBLIC LAND SURVEY MONUMENT RECORD

Note: This form is intended and designed to fulfill all requirements of Wisconsin Administrative Code, Chapter A-E 7.08 U.S. Public Land Survey Monument Record (3) (a) (b) (c) (d) (e) (f) (g) (h) (i). An additional sheet may be added if necessary to conform with said requirements.

(a) CORNER LOCATION: WISCRS - Oneida County
1/4 Cor. of Secs. 34 & 35 N: 201,879.01 USft
Township 38 North E: 186,531.32 USft
Range 6 East of the 4th P.M. Datum: NAD 1983(2011)
Town of Hazelhurst County of Oneida



(b) HISTORY OF ORIGINAL CORNER ESTABLISHMENT

Original Surveyor: Original Accessories:
Date of Survey: Commenced:
Completed:

(b) (f) (g) (h) Description of monument found at this corner and if it was accepted, state all evidence (material, testimonial, occupational, plats, records, other monuments) used as a basis for accepting. If not accepted or if nothing was found, state evidence used as basis for establishing location. If re-established through lost corner proportionate methods, indicate all monuments, distances and directions used to establish. Indicate type of monument and sign post found or set.

NOTE: This is a perpetuation of a previous USPLS Monument Record by Jerome N. Kraemer, RLS dated August 8, 1983 and filed in the office of the Oneida County Register of Deeds. A complete history of the corner can be found on the previous monument record. I accept the previous location as a true and faithful perpetuation or reestablishment of the original corner location and further perpetuate it as follows.

January 24, 2015: I found and accepted a 2.5" diam. aluminum pipe with a 3.25" diam. Oneida Co. aluminum cap projecting 4" above the ground surface. The monument is marked "S-1234 2004" but no record of its placement can be found. The existing accessories were found in substantial agreement with the record and were not remeasured as the sole purpose of this work is to report the coordinates of the corner point.

The coordinates shown were derived from a direct RTN GPS observation referenced to the WISCORS network.

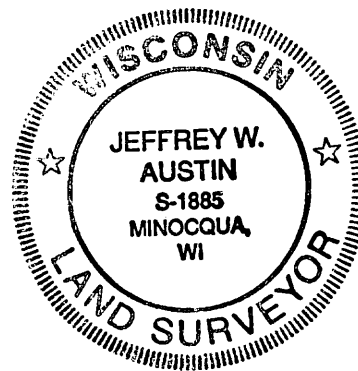
(c) (d) (e) Plan view of corner with ties to at least 4 witness monuments. If in disagreement with previously established corner, show the distances between the two corners and also indicate the ties to the disputed.

REGISTER OF DEEDS OFFICE
ONEIDA COUNTY
FILED

MAR 04 2015

AT _____ O'CLOCK _____ M
KYLE J. FRANSON
REGISTER OF DEEDS

(i) I, Jeffrey W. Austin, Registered Land Surveyor No. S-1885, hereby certify that the corner location on this record was determined by me or under my direction and control and that this U.S. Public Land Survey Monument Record is correct and complete to the best of my knowledge and belief.



Signature

MAR 1, 2015

Date

U.S. PUBLIC LAND SURVEY MONUMENT RECORD ADDENDUM

Note: This form is intended and designed to fulfill all requirements of the Wisconsin Administrative Code, Chapter A-E 7.08 U.S. Public Land Monument Record (3)(a)(b)(c)(d)(e)(f)(g)(h)(i). An additional sheet may be added if necessary to conform with said requirements.

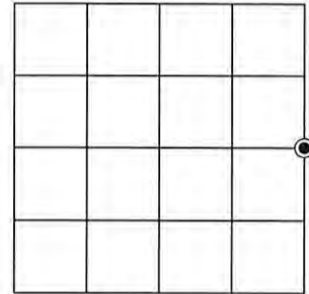
(a) CORNER LOCATION:

East Corner of Section 34
Township 38 North
Range 6 East
Town of Hazelhurst
County of Oneida

North:
East:
Datum:
GNSS Method:
GNSS Control:

(RECORDING AREA)

SECTION 34



(b) HISTORY OF ORIGINAL CORNER ESTABLISHMENT

Original Surveyor:
Date of Survey: Commenced
Completed
Original B.T.'S

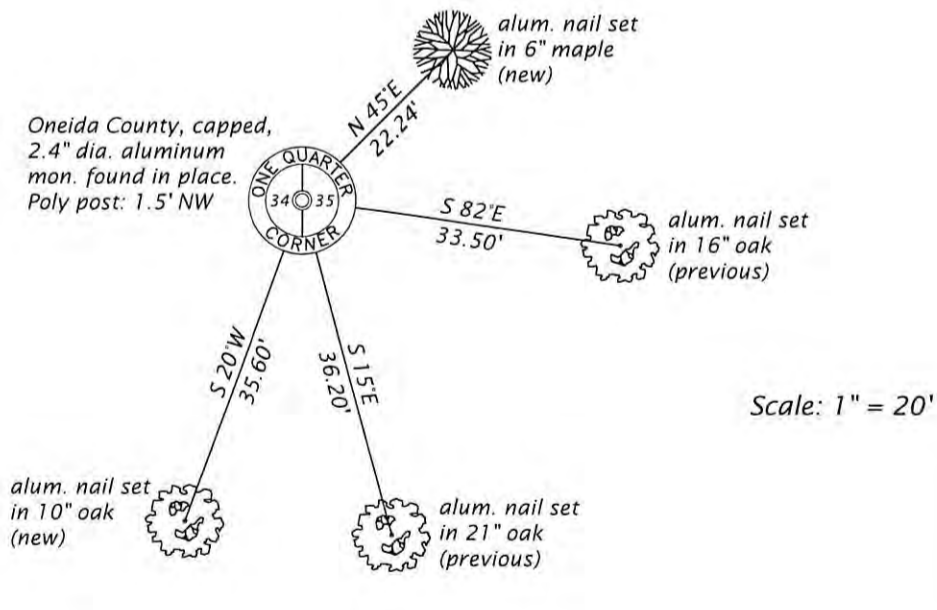
SEE PREVIOUS U.S.P.L.S. MONUMENT
RECORD DATED AUGUST 8, 1983

(f)(g)(h) DESCRIPTION OF MONUMENT FOUND AT THIS CORNER AND IF IT WAS ACCEPTED, STATE ALL EVIDENCE (MATERIAL, TESTIMONIAL, OCCUPATIONAL, PLATS, RECORD, OTHER MONUMENTS) USED AS A BASIS FOR ESTABLISHING LOCATION. IF NOT ACCEPTED OR IF NOTHING WAS FOUND, STATE EVIDENCE USED AS BASIS FOR ESTABLISHING LOCATION. IF REESTABLISHED THROUGH LOST CORNER PROPORTIONATE METHODS, INDICATE ALL MONUMENTS, DISTANCES AND DIRECTIONS USED TO ESTABLISH. INDICATE TYPE OF MONUMENT AND SIGN POST FOUND OR SET.

This is a perpetuation of a previous U.S.P.L.S. Monument Record by Jerome N. Kraemer, RLS, dated August 8, 1983, and filed in the office of the Oneida County Register of Deeds. A complete history of the corner can be found on the previous monument record. I accept the previous location as a true and faithful perpetuation or reestablishment of the original corner location and further perpetuate it as follows.

July 8, 2025 - James D. Rein, P.L.S. No. S-1234. We found, and I accepted, an Oneida County, capped, aluminum monument which I set on April 14, 2004, to replace an iron pipe, damaged by fence construction. The iron pipe was previously described in that monument record by Jerome N. Kraemer, dated August 8, 1983. The survey was canceled, the file closed, and I failed to file a monument record. Three of Kraemer's previous bearing trees are now dead or gone. See below for updated references.

(c)(d)(e) PLAN VIEW OF CORNER WITH TIES TO AT LEAST 4 WITNESS MONUMENTS. IF IN DISAGREEMENT WITH PREVIOUSLY ESTABLISHED CORNER, SHOW THE DISTANCE BETWEEN THE TWO CORNERS AND ALSO INDICATE THE TIES TO THE DISPUTED CORNER.



(i) I, JAMES D. REIN, PROFESSIONAL LAND SURVEYOR NO. S-1234 HEREBY CERTIFY THAT THE CORNER LOCATION ON THIS RECORD WAS DETERMINED BY ME OR UNDER MY DIRECTION AND CONTROL AND THAT THIS U.S. PUBLIC LAND SURVEY MONUMENT RECORD IS CORRECT AND COMPLETE TO THE BEST OF MY KNOWLEDGE AND BELIEF.



James D. Rein
SIGNATURE
12/19/25
DATE