

U.S. PUBLIC LAND SURVEY MONUMENT RECORD

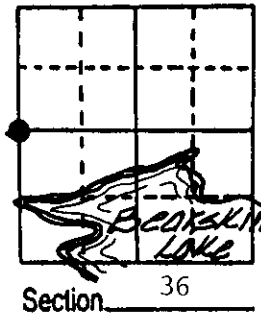
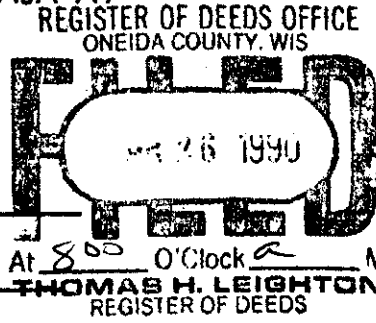
Note: This form is intended and designed to fulfill all requirements of Wisconsin Administrative Code, Chapter A-E 7.08 U.S. Public Land Survey Monument Record (3) (a) (b) (c) (d) (e) (f) (g) (h) (i). An additional sheet may be added if necessary to conform with said requirements.

(a) Corner location: Township 38 North

Range 6 East/West

Town/City/Village Hazelhurst

County Oneida



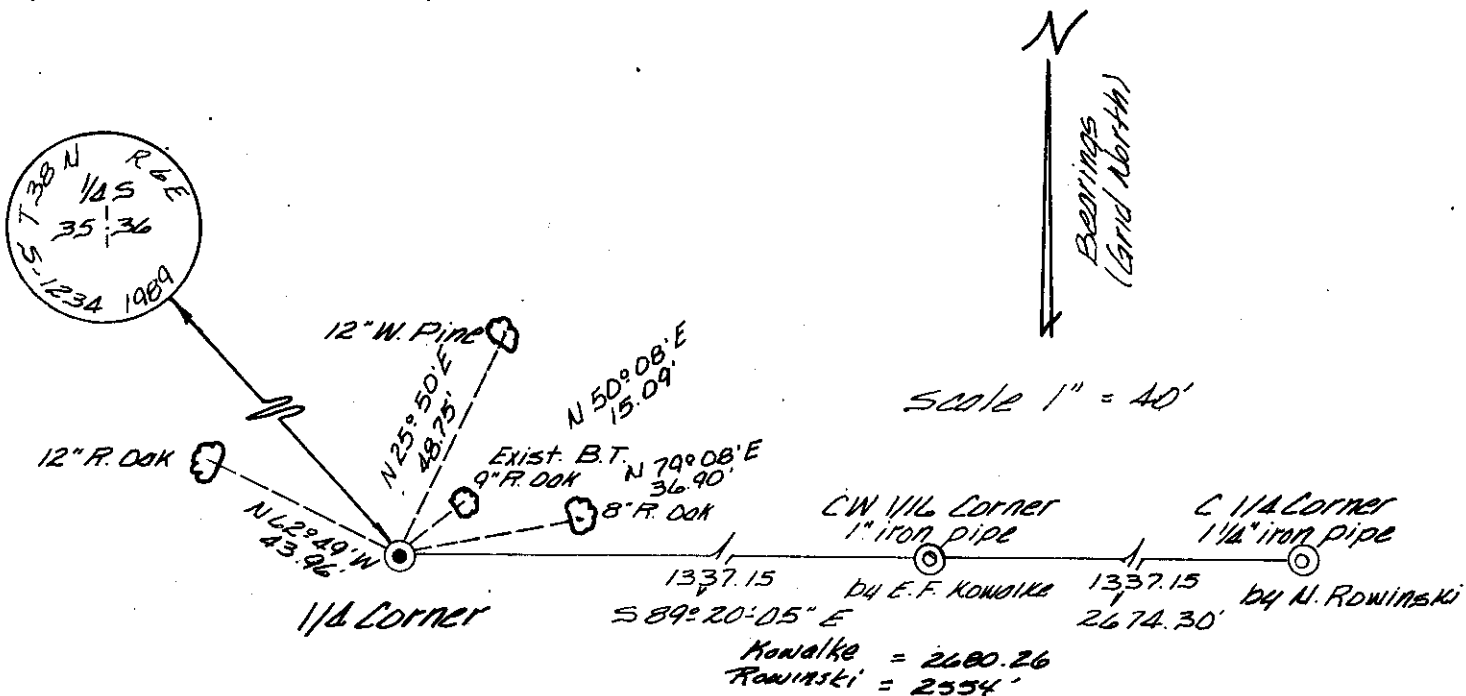
(b) (f) (g) (h) Description of monument found at this corner and if it was accepted, state all evidence (material, testimonial, occupational, plats, records, other monuments) used as a basis for accepting. If not accepted or if nothing was found, state evidence used as basis for establishing location. If reestablished through lost corner proportionate methods, indicate all monuments, distances and directions used to establish.

Sept 1863 - Alexander Anderson, Deputy Surveyor, note original Gov't Survey notes make no reference to the monumentation of this corner.

June 12, 1945 - E. F. Kowalke, Surveyor, recovered west quarter corner and center quarter corner by N. M. Rowinski. He monumented Center-West Sixteenth Corner as noted in Book #3, page 11.

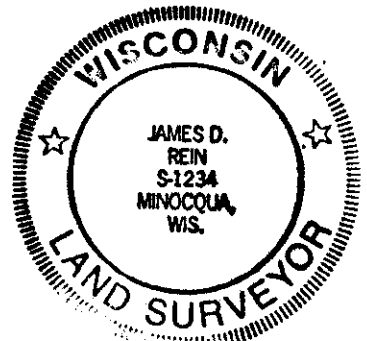
April 7th and 11th, 1989 - James D. Rein, Registered Land Surveyor #1234, recovered C₁/4 Corner and CWL/16. Restored corner by doubling from center quarter corner through Center - West sixteenth corner. Set 2" dia. X 30" long capped Oneida County aluminum monument. Corner location faces existing Oak B.T. and blazed line to east. Set aluminum nails at center of root crown of B.T.'s blaze facing corner location.

(c) (d) (e) Plan view of corner with ties to at least 4 witness monuments. If in disagreement with previously established corner, show the distances between the two corners and also indicate the ties to the disputed corner.



(i) I, James D. Rein R.L.S. #1234
 (type or print name) certify that the corner location on this record was determined by me or under my direction and control and that this U.S. Public Land Survey Monument Record is correct and complete to the best of my knowledge and belief.

James D. Rein Signature May 31st, 1989 Date



Index No. X-171

3806352000