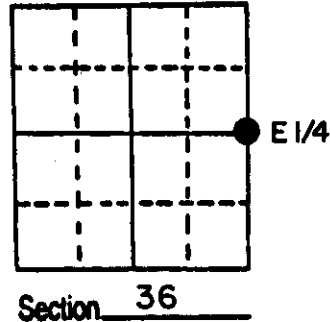


# U.S. PUBLIC LAND SURVEY MONUMENT RECORD

Note: This form is intended and designed to fulfill all requirements of Wisconsin Administrative Code, Chapter A-E 5.02, U.S. Public Land Survey Monument Record (3) (a) (b) (c) (d) (e) (f) (g) (h) (i). An additional sheet may be added if necessary to conform with said requirements.

(a) Corner location: Township 38 North  
 Range 6 East ~~West~~  
 Town/City/Village HAZELHURST  
 County ONEIDA



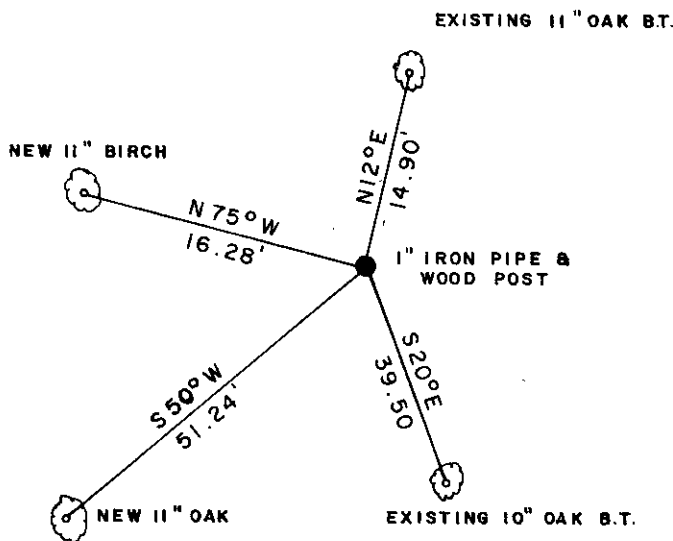
(b) (f) (g) (h) Description of monument found at this corner and if it was accepted, state all evidence (material, testimonial, occupational, plats, records, other monuments) used as a basis for accepting. If not accepted or if nothing was found, state evidence used as basis for establishing location. If reestablished through lost corner proportionate methods, indicate all monuments, distances and directions used to establish.

1860- Millard set original corner. North between 31 & 36, 40.00 set corner. BT's W. Pine 10" N87W 20; W. Pine 9" N30E 22.

1970- John Fisher made the following BT's N. Pine 20" S42E 70.9, Oak 9" S20E 38.9', Oak 10" N12E 14.8'

1986- I found a 1" iron pipe and witnessed it as shown below.

(c) (d) (e) Plan view of corner with ties to at least 4 witness monuments. If in disagreement with previously established corner, show the distances between the two corners and also indicate the ties to the disputed corner.



REGISTER OF DEEDS OFFICE  
ONEIDA COUNTY, WIS.

FILED

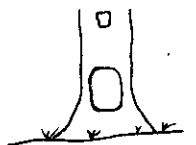
6 OCT 1986

A. 8:00 O'Clock M

DORIS VERAGE KUEHN  
REGISTER OF DEEDS

N  
▲  
◇  
▼

- DISTANCES MEASURED TO 6" IRON NAIL IN SIDES OF TREES
- MAGNETIC BEARINGS TAKEN WITH HANDHELD COMPASS
- NEW BTS. ARE BLAZED →
- NO SCALE



(i) I, WILLIAM E. BANDOW R.L.S. 1182  
 (type or print name) certify that the corner location on this record was determined by me or under my direction and control and that this U.S. Public Land Survey Monument Record is correct and complete to the best of my knowledge and belief.

William E. Bandow 10-3-86  
 Signature Date  
 GENISOT & ASSOCIATES INC.  
 1512 EAGLE ST., RHINE, WI.



Index No. X-25

3806362000

