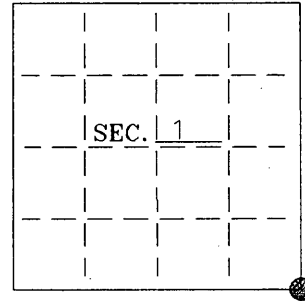


U. S. PUBLIC LAND SURVEY MONUMENT RECORD

Note: This form is intended and designed to fulfill all requirements of Wisconsin Administrative Code-Chapter A-E 7.08 U. S. Public Land Survey Monument Record (3)(a)(b)(c)(d)(e)(f)(g)(h)(i). An additional sheet may be added if necessary to conform with said requirements.

(a) CORNER LOCATION: State Plane Coordinates
SE corner of Sec. 1 X ---
 Township 38 North Y ---
 Range 7 East Datum Base ---
 Town Lake Tomahawk County of Oneida



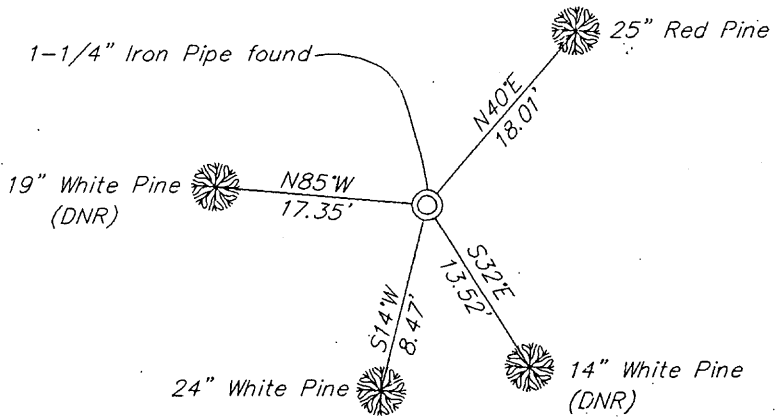
(b) HISTORY OF ORIGINAL CORNER ESTABLISHMENT:
 Original Surveyor: Alfred Millard
 Date of Survey: Commenced 1860
 Completed 1860

Original B.T.'S
 12" W. Pine S37°W, 9 lks
 16" W. Pine N59°W, 22 lks
 14" W. Pine N70°E, 16 lks
 9" W. Pine S67°E, 25 lks

(b)(f)(g)(h) Description of monument found at this corner and if it was accepted—state all evidence (material—testimonial—occupation—plats—records—other monuments) used as a basis for accepting. If not accepted or if nothing was found state evidence used as basis for establishing location. If reestablished through lost corner proportionate methods indicate all monuments—distances and directions used to establish. Indicate type of monument and sign post found or set.

- 1907— Vaughan did not find the original corner and set post at 111.91 north of original MC on north side of Wisconsin River. Pw(stp)18" N62°E .345ch.; Pw(stp)20" S21°W .645ch.
- DNR notes state they found Vaughan's stump N59°E 34lks and set iron pipe. They show two BT's: Pw 8" S39°E .210 ch.(13.86') and Pw 10" N87°E .250 ch.(16.50').
- 1959— A map by Harold E. Berndt(DNR) shows a symbol at the Southeast Section Corner with two BT's:Pw 10 N89°W, 25lks(16.50'), Pw 8 S39°E, 20-1/2 lks(13.53'), and an original stump N59-1/2°E, 34 lks.
- 1962— A map by James Griffin (Northwoods Surveyors) shows a symbol at the Southeast Section Corner with two BT's:8" White Pine S38°E, 13.9' and 10" White Pine N58°W, 16.4'.
- 1971— A map by John Fisher (Northwoods Surveyors) shows he found an iron pipe at the Southeast Section Corner with the same two BT's as 1962 survey.
- 2002— I found and accepted a 1-1/4" iron pipe. I found the DNR's BT's and made new BT's as shown below.

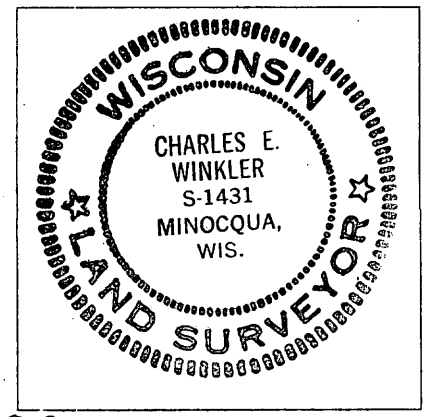
(c)(d)(e) Plan view of corner with ties to at least 4 witness monuments. If in disagreement with previously established corner—show the distances between the two corners and also indicate the ties to the disputed.



- Set carsonite post ±1' east of corner.
- Set aluminum nails in each BT.

(i) I Charles E. Winkler S-1431
 hereby certify that the corner location on this record was determined by me or under my direction and control and that this U.S. Public Land Survey Monument Record is correct and complete to the best of my knowledge and belief.

Charles E. Winkler 4/22/03
 Signature Foltz and Associates, Inc. Date



INDEX NO. E-25

3807010000

U.S. PUBLIC LAND SURVEY MONUMENT RECORD

Note: This form is intended and designed to fulfill all requirements of Wisconsin Administrative Code, Chapter A-E 7.08 U.S. Public Land Survey Monument Record (3)(a-i).

(a) CORNER LOCATION
 Cor. of Secs. 1, 6, 7 & 12
 Township 38 North
 Range 7 & 8 East of the 4th P.M.
 Town of Lake Tomahawk
 County of Oneida

WISCORS - Oneida County
 N: 225,726.39 USft
 E: 228,763.19 USft
 Datum: NAD 83(2011)
 GNSS Method: Static - Direct
 GNSS Control: WISCORS VRS



(b) HISTORY OF ORIGINAL CORNER ESTABLISHMENT

Original Surveyor: _____ Original Accessories: _____
 Date of Survey Commenced: _____ See previous USPLS Monument Record
 Completed: _____

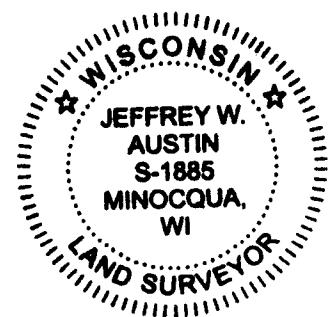
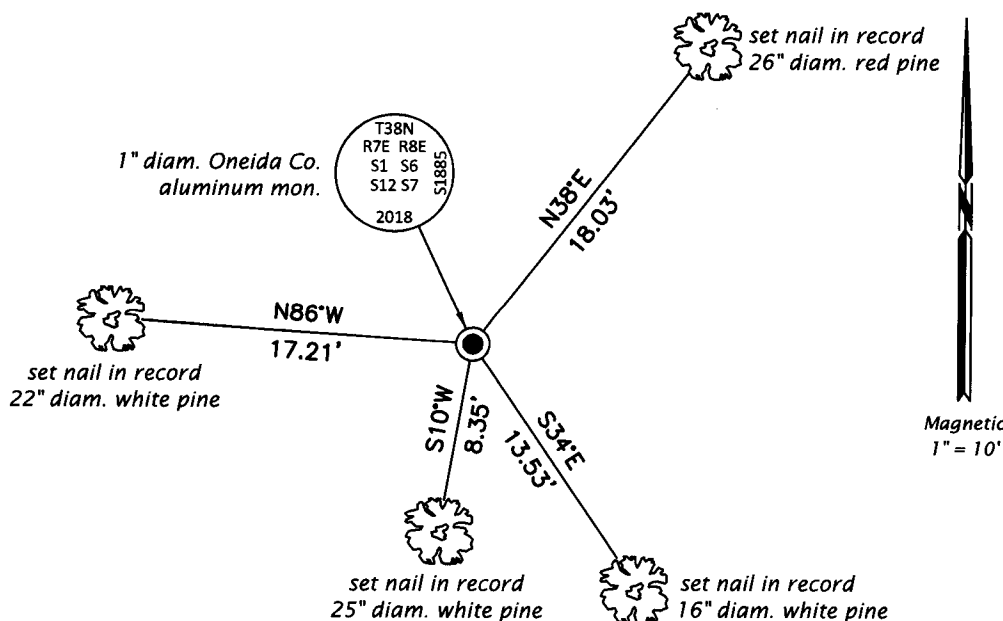
(b)(f)(g)(h) Description of monument found at this corner and if it was accepted, state all evidence (material, testimonial, occupational, plats, records, other monuments) used as a basis for accepting. If not accepted or if nothing was found, state evidence used as basis for establishing location. If re-established through lost corner proportionate methods, indicate all monuments, distances and directions used to establish. Indicate type of monument and sign post found or set.

This is a perpetuation of a previous USPLS Monument Record by Charles E. Winkler, RLS dated April 22, 2003 and filed in the office of the Oneida County Register of Deeds. A complete history of the corner can be found on the previous monument record. I accept the previous location as a true and faithful perpetuation or reestablishment of the original corner location and further perpetuate it as follows.

July 23, 2018: I found and accepted the record monument, a 1-1/4" diam., 42" long iron pipe. In place of the pipe, I set a 1" diam., 30" long aluminum pipe with a 2-1/2" diam. Oneida Co. aluminum cap flush with the ground surface. I found or established accessories as shown below. I found a white vinyl sign post bearing Southwest, 0.7 ft.

The coordinate value shown has been verified by at least one of the following methods: 1) comparison to a previously GPS determined published value; 2) the value is the average of two or more GPS observations at a markedly different time; 3) one or more distances were measured back to the GPS observed corner from temporary GPS observed offset locations.

(c)(d)(e) Plan view of corner with ties to at least 4 witness monuments. If in disagreement with previously established corner, show the distances between the two corners and also indicate the ties to the disputed.

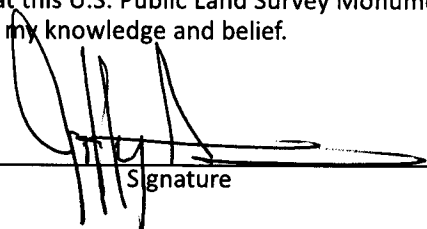


REGISTER OF DEEDS OFFICE
 ONEIDA COUNTY
 FILED

AUG 16 2018

**KYLE J. FRANSON
 REGISTER OF DEEDS**

(i) I, Jeffrey W. Austin, Professional Land Surveyor No. S-1885, hereby certify that the corner location on this record was determined by me or under my direction and control and that this U.S. Public Land Survey Monument Record is correct and complete to the best of my knowledge and belief.

 Signature
 AUG 3, 2018 Date