

# U.S. PUBLIC LAND SURVEY MONUMENT RECORD

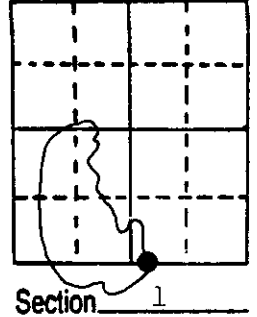
Note: This form is intended and designed to fulfill all requirements of Wisconsin Administrative Code, Chapter A-E 5.02, U.S. Public Land Survey Monument Record (3) (a) (b) (c) (d) (e) (f) (g) (h) (i). An additional sheet may be added if necessary to conform with said requirements.

(a) Corner location: Township 38 North

Range 7 East/West

Town/City/Village Lake Tomahawk

County Oneida



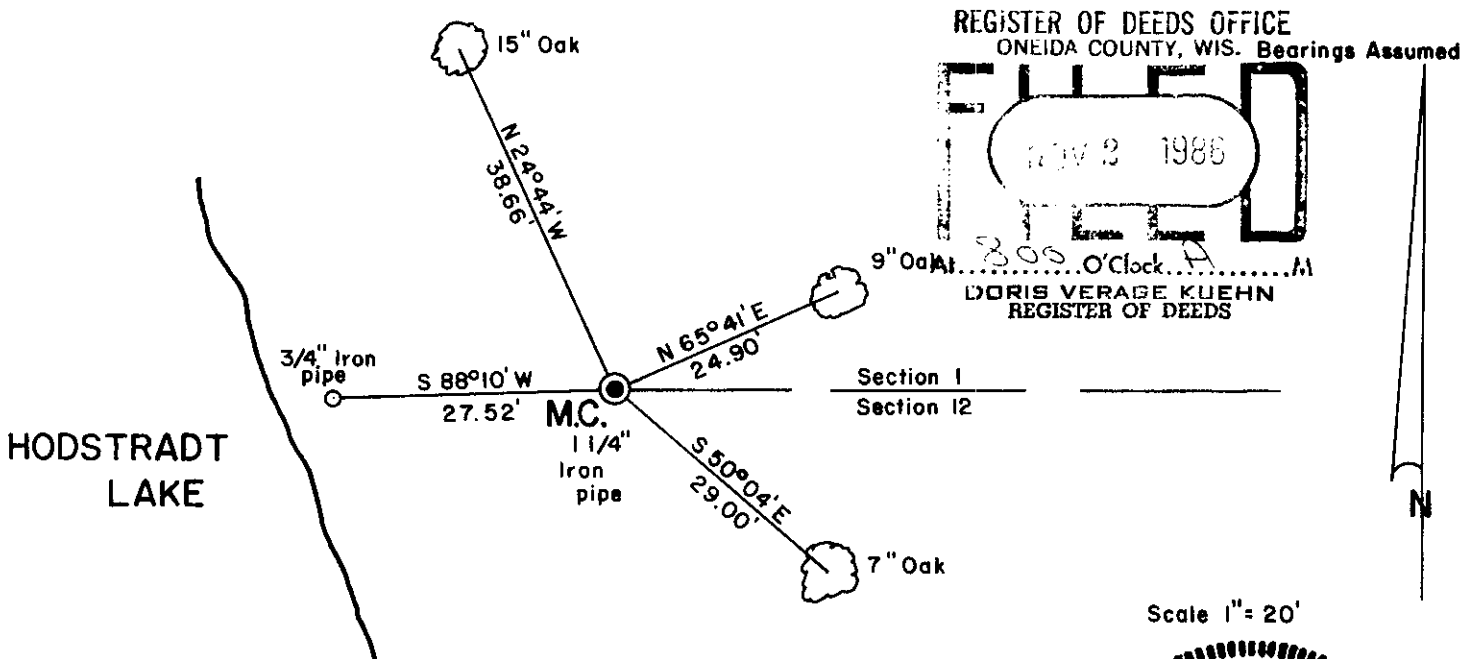
(b) (f) (g) (h) Description of monument found at this corner and if it was accepted, state all evidence (material, testimonial, occupational, plats, records, other monuments) used as a basis for accepting. If not accepted or if nothing was found, state evidence used as basis for establishing location. If reestablished through lost corner proportionate methods, indicate all monuments, distances and directions used to establish.

August, 1863 - Alexander Anderson, Deputy Surveyor - Set meander post Y. Pine 12", S16°E, 20 links, Y. Pine 8", N54°E, 50 links.

June, 1962 - Pipe shown on map by Griffin as M.C., with another pipe S88°-04'W, 27.9 feet, with bearing trees: 9" Oak, N21°E, 38.3 feet and 4" Oak, N64°E, 25.1 feet.

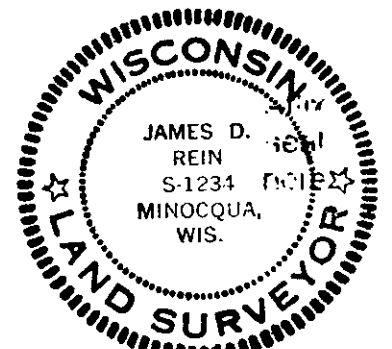
May 20, 1986 - James D. Rein - found 1 1/4" iron pipe projecting 5" above ground, with red top wood stake. A 3/4" Iron pipe bears S88°-10'W, 27.52 feet. Existing bearing trees: 9" Oak, N65°-41'E, 24.90 feet, and 15" Oak N24°-44'W, 38.66 feet. Made new bearing tree: 7" Oak, S50°-04'E, 29.00 feet. Measurements made to aluminum nails set in center of root crown on side of trees.

(c) (d) (e) Plan view of corner with ties to at least 4 witness monuments. If in disagreement with previously established corner, show the distances between the two corners and also indicate the ties to the disputed corner.



(i) I, James D. Rein, Registered Land Surveyor No. S-1234  
 (type or print name) certify that the corner location on this record was determined by me or under my direction and control and that this U.S. Public Land Survey Monument Record is correct and complete to the best of my knowledge and belief.

James D. Rein Signature      6/25/86 Date



Index No. E-23

3807010017

## U.S. PUBLIC LAND SURVEY MONUMENT RECORD ADDENDUM

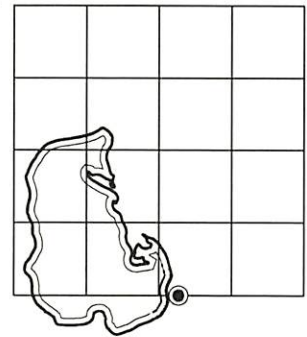
Note: This form is intended and designed to fulfill all requirements of the Wisconsin Administrative Code, Chapter A-E 7.08 U.S. Public Land Monument Record (3)(a)(b)(c)(d)(e)(f)(g)(h)(i). An additional sheet may be added if necessary to conform with said requirements.

**(a) CORNER LOCATION:**

Southeast Meander Corner of Section 1	North:
Township 38 North	East:
Range 7 East	Datum:
Town of Lake Tomahawk	GNSS Method:
County of Oneida	GNSS Control:

(RECORDING AREA)

SECTION 1



**(b) HISTORY OF ORIGINAL CORNER ESTABLISHMENT**

Original Surveyor:  
Date of Survey: Commenced  
Completed  
Original B.T.'S

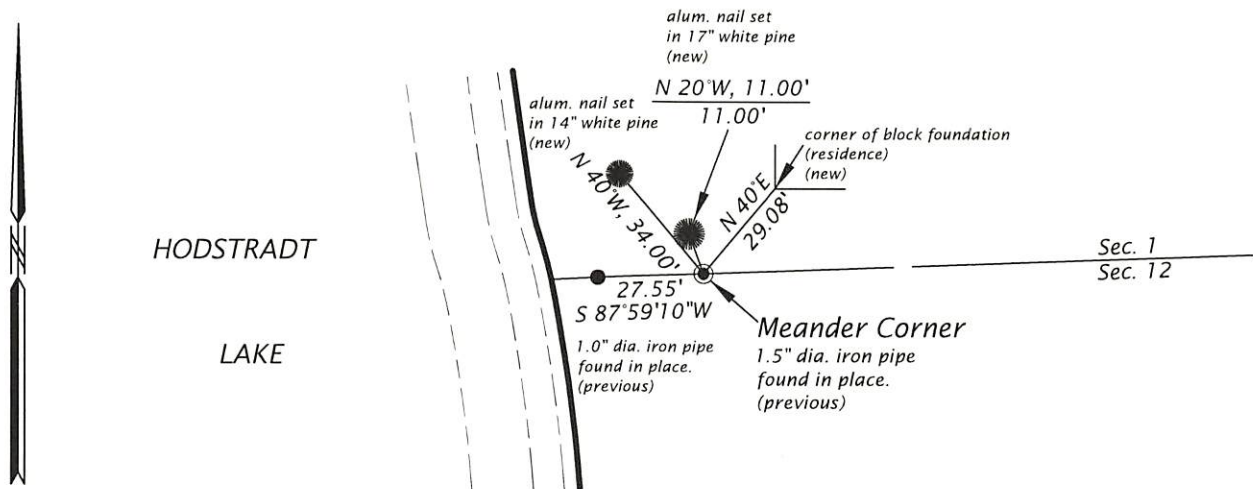
**SEE PREVIOUS U.S.P.L.S. MONUMENT RECORD DATED JUNE 25, 1986**

(f)(g)(h) DESCRIPTION OF MONUMENT FOUND AT THIS CORNER AND IF IT WAS ACCEPTED, STATE ALL EVIDENCE (MATERIAL, TESTIMONIAL, OCCUPATIONAL, PLATS, RECORD, OTHER MONUMENTS) USED AS A BASIS FOR ESTABLISHING LOCATION. IF NOT ACCEPTED OR IF NOTHING WAS FOUND, STATE EVIDENCE USED AS BASIS FOR ESTABLISHING LOCATION. IF REESTABLISHED THROUGH LOST CORNER PROPORTIONATE METHODS, INDICATE ALL MONUMENTS, DISTANCES AND DIRECTIONS USED TO ESTABLISH. INDICATE TYPE OF MONUMENT AND SIGN POST FOUND OR SET.

This is a perpetuation of a previous U.S.P.L.S. Monument Record by James D. Rein, RLS-1234, dated June 25, 1986, and filed in the office of the Oneida County Register of Deeds. A complete history of the corner can be found on the previous monument record. I accept the previous location as a true and faithful perpetuation or reestablishment of the original corner location and further perpetuate it as follows.

December 12, 2023, James D. Rein, PLS No. S-1234, we found and I accepted the 1.5" dia. iron pipe. We further perpetuate it as shown in the plan. The northwesterly, northeasterly and southeasterly oak trees are now gone. See below for 2 additional bearing trees and updated ties to the recovered references.

(c)(d)(e) PLAN VIEW OF CORNER WITH TIES TO AT LEAST 4 WITNESS MONUMENTS. IF IN DISAGREEMENT WITH PREVIOUSLY ESTABLISHED CORNER, SHOW THE DISTANCE BETWEEN THE TWO CORNERS AND ALSO INDICATE THE TIES TO THE DISPUTED CORNER.



Scale: 1" = 50'

(i) I, JAMES D. REIN, PROFESSIONAL LAND SURVEYOR NO. S-1234 HEREBY CERTIFY THAT THE CORNER LOCATION ON THIS RECORD WAS DETERMINED BY ME OR UNDER MY DIRECTION AND CONTROL AND THAT THIS U.S. PUBLIC LAND SURVEY MONUMENT RECORD IS CORRECT AND COMPLETE TO THE BEST OF MY KNOWLEDGE AND BELIEF.



*James D. Rein*  
SIGNATURE

1-16-24  
DATE

INDEX NO. E-23

3807010017