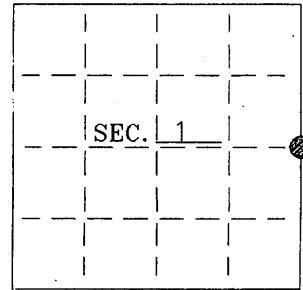


U. S. PUBLIC LAND SURVEY MONUMENT RECORD

Note: This form is intended and designed to fulfill all requirements of Wisconsin Administrative Code--Chapter A-E 7.08 U. S. Public Land Survey Monument Record (3)(a)(b)(c)(d)(e)(f)(g)(h)(i). An additional sheet may be added if necessary to conform with said requirements.

(a) CORNER LOCATION: State Plane Coordinates
E 1/4 corner of Sec. 1 N ---
 Township 38 North E ---
 Range 7 East Datum Base ---
 Town Lake Tomahawk County of Oneida



(b) HISTORY OF ORIGINAL CORNER ESTABLISHMENT: Original B.T.'S

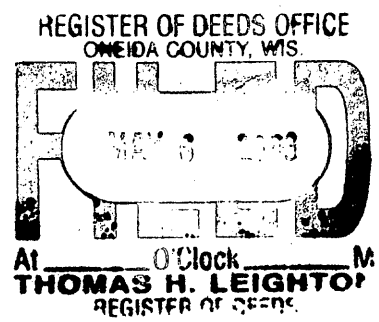
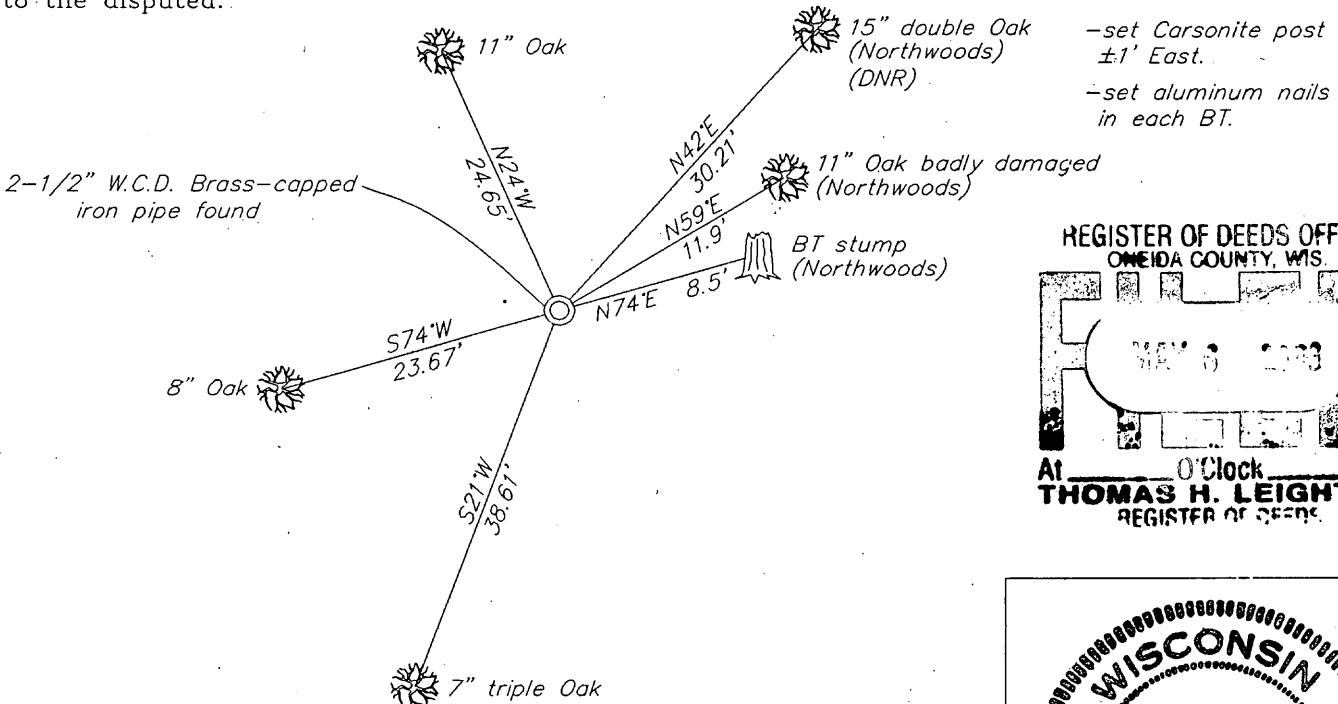
Original Surveyor: Alfred Millard
 Date of Survey: Commenced 1860
 Completed 1860

Y. Pine 16" N70°E, 12 lks (7.92')
 Y. Pine 16" S68°W, 7 lks (4.62')

(b)(f)(g)(h) Description of monument found at this corner and if it was accepted--state all evidence (material--testimonial--occupation--plats--records--other monuments) used as a basis for accepting. If not accepted or if nothing was found state evidence used as basis for establishing location. If reestablished through lost corner proportionate methods indicate all monuments--distances and directions used to establish. Indicate type of monument and sign post found or set.

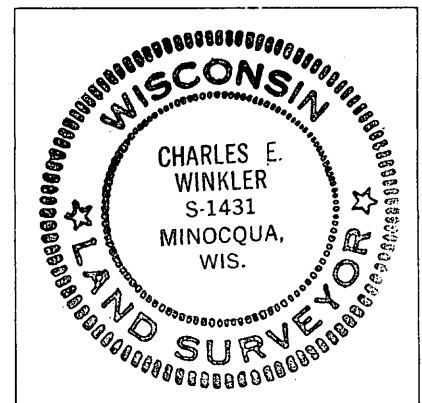
- 1907-- Vaughan "set post from O.B.T. stps" and made a new BT: PW(stp) 20" S30°W, 12 lks.
- 1940-- On a map by Maine (Oneida County Surveyor) he found the Orig. Gov't 1/4 Corner with the following BT's: stp. Orig. Y.P. 16 S68°W, 7 lks with iron marks, stub Orig. Y.P. 16 N71°E, 12 lks marks burned off, D.H. Vaughan's stp W.P. 20 S30-1/2°E, 12 lks. Maine set Oak post and made a new BT: blk Oak 6" N54-1/2°E, 18-1/2 lks (12.21').
- 1958-- DNR (Berndt) notes state he found corner. BT present PN(stp) 12" N68°E, 0.130 ch. (8.58') and made a new BT: OR 7" N35°E, 0.460 ch (30.36').
- 1962-- Northwoods Surveyors notes state they found a W.C.D. capped iron pipe with three BT's: 8" Oak N40°E, 30.4'(DNR), 12" Oak N60°E, 12.0', and Orig. Pine stp N75°E, 8.7'.
- 2001-- I found and accepted a 2-1/2" W.C.D. brass-capped iron pipe. I recovered the original BT's (stumps), Vaughan's BT stump, Maine's Oak BT, and Northwoods' Oak BT. See sketch below.

(c)(d)(e) Plan view of corner with ties to at least 4 witness monuments. If in disagreement with previously established corner--show the distances between the two corners and also indicate the ties to the disputed.



(i) I Charles E. Winkler S-1431 hereby certify that the corner location on this record was determined by me or under my direction and control and that this U.S. Public Land Survey Monument Record is correct and complete to the best of my knowledge and belief.

Charles E. Winkler 4/22/03
 Signature Foltz and Associates, Inc. Date



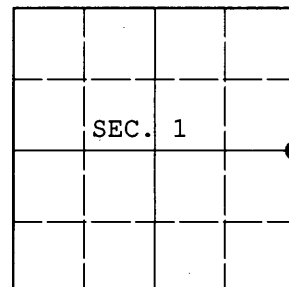
INDEX NO. C-25

3807012000

U.S. PUBLIC LAND SURVEY MONUMENT RECORD

Note: This form is intended and designed to fulfill all requirements of Wisconsin Administrative Code, Chapter A-E 7.08 U.S. Public Land Survey Monument Record (3) (a) (b) (c) (d) (e) (f) (g) (h) (i). An additional sheet may be added if necessary to conform with said requirements.

(a) CORNER LOCATION: Plane Coordinates
 1/4 Cor. of Secs. 1 & 6 N:
 Township 38 North E:
 Range 7 & 8 East of the 4th P.M. Datum:
 Town of Lake Tomahawk County of Oneida



(b) HISTORY OF ORIGINAL CORNER ESTABLISHMENT

Original Surveyor: Alfred Millard Original Accessories:
 Date of Survey: Commenced: Sept., 1860 y. pine 16" N71°E, 12 lks.
 Completed: Sept., 1860 y. pine 16" S68°W, 7 lks.

(b) (f) (g) (h) Description of monument found at this corner and if it was accepted, state all evidence (material, testimonial, occupational, plats, records, other monuments) used as a basis for accepting. If not accepted or if nothing was found, state evidence used as basis for establishing location. If re-established through lost corner proportionate methods, indicate all monuments, distances and directions used to establish. Indicate type of monument and sign post found or set.

March, 1958: On OCS #L-687, DNR indicates corner is original with the following accessories: PN stp. 12" N68°E, 0.130 ch.; OR 7" N35°E, 0.460 ch.

November 17, 2011: I found and accepted a 2-1/2" diam. iron pipe with 3" diam. WCD brass cap projecting 24" above the ground surface. I found both GLO stumps at record bearing and distance with the NE stump plainly scribed. I found or established accessories as shown below and set a white plastic sign post bearing East, 1 ft. dist.

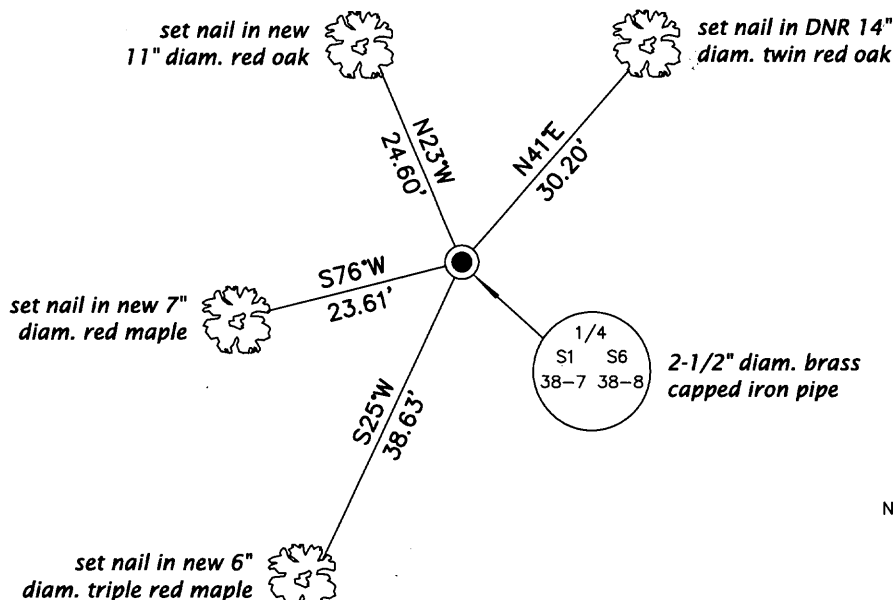
REGISTER OF DEEDS OFFICE
 ONEIDA COUNTY

FILED

JAN 16 2012

AT _____ O'CLOCK _____ M
THOMAS H. LEIGHTON
 REGISTER OF DEEDS

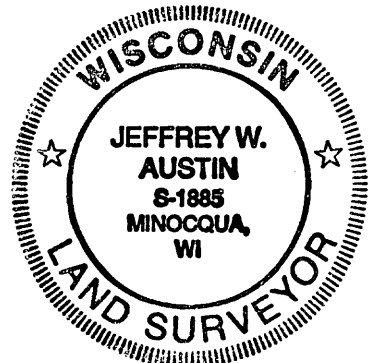
(c) (d) (e) Plan view of corner with ties to at least 4 witness monuments. If in disagreement with previously established corner, show the distances between the two corners and also indicate the ties to the disputed.



(i) I, Jeffrey W. Austin, Registered Land Surveyor No. S-1885, hereby certify that the corner location on this record was determined by me or under my direction and control and that this U.S. Public Land Survey Monument Record is correct and complete to the best of my knowledge and belief.


 Signature

DEC 31, 2011
 Date



3807012000 (INDEX NO. C-25)