

U.S. PUBLIC LAND SURVEY MONUMENT RECORD

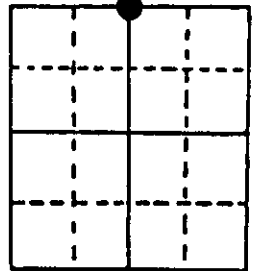
Note: This form is intended and designed to fulfill all requirements of Wisconsin Administrative Code, Chapter A-E 7.08 U.S. Public Land Survey Monument Record (3) (a) (b) (c) (d) (e) (f) (g) (h) (i). An additional sheet may be added if necessary to conform with said requirements.

(a) Corner location: Township 38 North Corner: North 1/4

Section 11 Range 7 East Original Surveyor: Anderson/GLO

Town/City/Village Town of Lake Tomahawk Original B.T.'s: 20" Pn S62°E 5 lks
20" Pn N08°W 12 lks

County Oneida

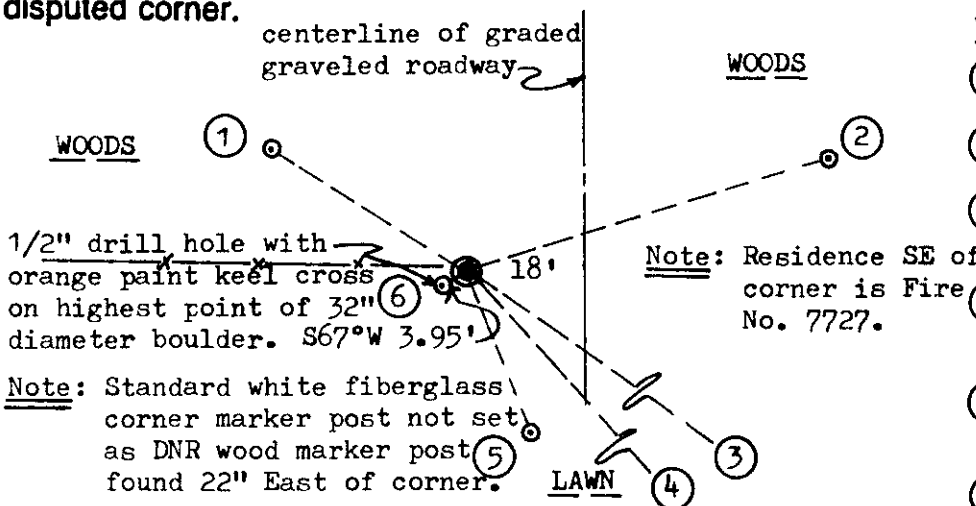


Original Survey Date: August 1863 ● Location

(b) (f) (g) (h) Description of monument found at this corner and if it was accepted, state all evidence (material, testimonial, occupational, plats, records, other monuments) used as a basis for accepting. If not accepted or if nothing was found, state evidence used as basis for establishing location. If reestablished through lost corner proportionate methods, indicate all monuments, distances and directions used to establish. Indicate type of monument found or set and sign post.

Found and accepted standard 2" iron pipe monument with stamped DNR brass cap 19" above grade at corner. No original GLO corner evidence recovered. Corner previously perpetuated with new post by Vaughn from OBTs and later by Hall who set a 6" square concrete post at corner and marked a new BT 9" Pr S75°E 0.552 chains, which is now gone. In 1965, Ilg/WCD found Halls concrete corner post 39.640 chains west of NE section corner and 39.454 chains East of NW section corner, and marked new BTs 9" Bw S63°W 0.099 chains and 6" Mr N37°E 0.361 chains; Ilg SW BT found as 12" Bw S68°W with upper and lower face blazes shut but plain and Ilg NE BT is now gone. In 1977, Wilderness Surveying found concrete corner post and Ilg SW BT and noted Ilg NE BT gone. In 1991, Seymour/DNR replaced broken off concrete monument with DNR brass capped monument and noted new BTs with PK nail and washer in lower right face, 12" Or S22°E 27.02', now 10" Or S21°E and used for new ties below; also 4" Pw N59°W 36.40' now 5" Pw N57°W; his ties to house foundation corners SE of corner monument also checked and noted below. Seymour also noted he set a standard DNR wood corner marker post East of corner and that an old fence line leads west of corner location, which I also found about 1 foot north of corner. This recovery completed October 10, 1996, no witnesses present. Roadway East of corner is by 20' wide easement approved by Wisconsin DNR in 1977 for private lands access.

(c) (d) (e) Plan view of corner with ties to at least 4 witness monuments. If in disagreement with previously established corner, show the distances between the two corners and also indicate the ties to the disputed corner.



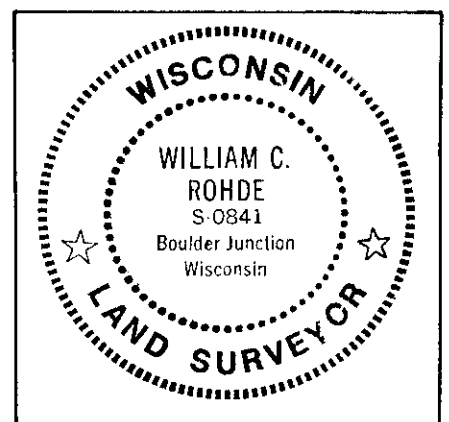
Witness Monument Ties:

- ① 5" Pw N57°W 36.25'. (DNR BT).
- ② 12" Or N73°E 59.48'. (New)
- ③ NE Corner-House Foundation S55°E 134.75'.
- ④ NW Corner-House Foundation S42°E 108.45'.
- ⑤ 10" Or (Older BT with lower face blaze plain) S21°E 26.84'
- ⑥ See Note on Plan View.

Unless otherwise indicated, all BT witness monument ties are to a 1/4" dia. by 2.5" long PK nail with 1.25" dia. steel washer set in unblazed right face bark; and a PK nail with 2" dia. steel washer stamped BT also set in unblazed front face bark of each BT at DBH. All previous corner recovery notes from Wisconsin DNR and/or Oneida County survey records.

Scale: 1" = 20'

(i) I, William C. Rohde, RLS 841
(type or print name) certify that the corner location on this record was determined by me or under my direction and control and that this U.S. Public Land Survey Monument Record is correct and complete to the best of my knowledge and belief.



William C. Rohde 10/19/96
Signature Date