

# U.S. PUBLIC LAND SURVEY MONUMENT RECORD

**Note:** This form is intended and designed to fulfill all requirements of Wisconsin Administrative Code, Chapter A-E 7.08 U.S. Public Land Survey Monument Record (3) (a) (b) (c) (d) (e) (f) (g) (h) (i). An additional sheet may be added if necessary to conform with said requirements.

(a) Corner location: Township 38 North Corner: East 1/4 Corner

Section 1 Range 7 East Original Surveyor: A. Anderson

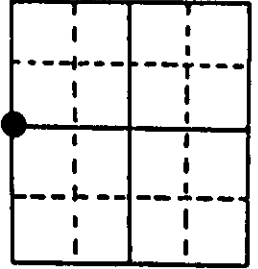
Town/City/Village Lake Tomahawk

County Oneida

Original B.T.'s: 60" Pw S07°E 115 lks  
24" Pw S29°W 131 lks

Note: Decayed remains probable by field search but uncertain.

Original Survey Date: August 1863

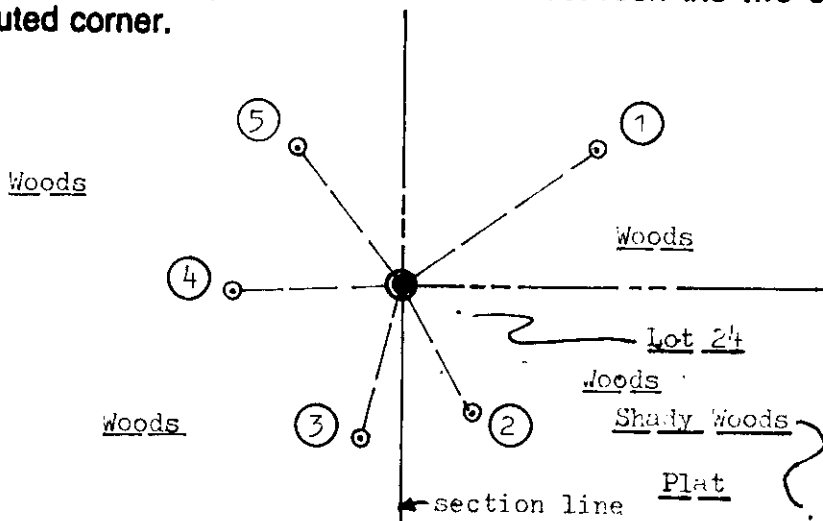


● Location

(b) (f) (g) (h) Description of monument found at this corner and if it was accepted, state all evidence (material, testimonial, occupational, plats, records, other monuments) used as a basis for accepting. If not accepted or if nothing was found, state evidence used as basis for establishing location. If reestablished through lost corner proportionate methods, indicate all monuments, distances and directions used to establish. Indicate type of monument found or set and sign post.

Found and accepted a standard 1 1/2" dia. iron pipe monument with stamped WCD brass cap 12" above existing grade at this corner location; also a crimped top 1" dia. iron pipe marker post along SW side of brass capped monument and 20" above grade. I set a standard white gally 'T' corner marker post 10" West of corner monument. In 1962, Fisher/Northwoods Survey of Minocqua, accepted a 1" iron pipe at this corner location for platting surveys to East and South, and noted new BTs: 16" Oak N70°E 11.7' now dead, a 13" Oak N82°E 9.7' is now down and rotted and a 7" Pw N48°W 27.8' is now a low decayed/hummocked stump. In 1965, ILG of WCD notes he found corner and previous older BTs: 60" CRT stump to south, now gone, and previous BTs by Fisher in 1962; and ILG noted other BTs: 2" Pw N57°E 0.540 chains, now a low rotted stump, a 9" Oak S29°W 0.220 chains, not found, and a 6" Mr N48°E 0.374 chains is now N54°E and used for new ties below. In 1974, Griffin/Northwoods Surveyors of Minocqua, noted brass capped iron pipe at this corner, and older Pw Pw BT, which he also used as the monument for the NW corner of Lot 24 of Shady Woods Subdivision plat south and east. This recovery completed December 16, 1997; there were no witnesses present. The corner is about 350 feet west of Poplar Road per Seymour/DNR in 1988, who also marked new BTs which I found and used for new ties below. Corner is NW of residence at #7223 Poplar Road.

(c) (d) (e) Plan view of corner with ties to at least 4 witness monuments. If in disagreement with previously established corner, show the distances between the two corners and also indicate the ties to the disputed corner.



**Witness Monument Ties:**

- ① Record BT 8" Mr N54°E 24.80'; south trunk of double with upper & lower blazes open.
- ② Record BT 8" Or S26°E 15.66'; upper & lower blazes shut but plain.
- ③ Record BT 11" Or BT S15°W 16.60'; upper & lower blazes open and plain.
- ④ New BT 6" Or S88°W 17.76'.
- ⑤ Record BT 8" Or N37°W 18.00'; upper & lower blazes open.



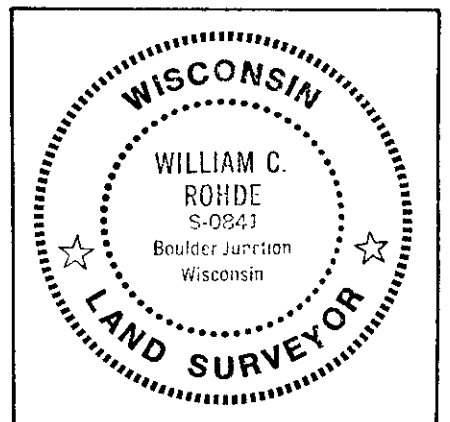
Scale: 1" = 20'

Unless otherwise indicated, all BT witness monument ties are to a 1/4" dia. by 2.5" long PK nail with 1.25" dia. steel washer set in unblazed right face bark; and a PK nail with 2" dia. steel washer stamped BT also set in unblazed front face bark of each BT at DBH. All previous corner recovery notes from Wisconsin DNR and/or Oneida County survey records.

(i) I, William C. Rohde, RLS 841  
(type or print name) certify that the corner location on this record was determined by me or under my direction and control and that this U.S. Public Land Survey Monument Record is correct and complete to the best of my knowledge and belief.

William C. Rohde  
Signature

Dec. 21, 1997  
Date



Index No. C 21