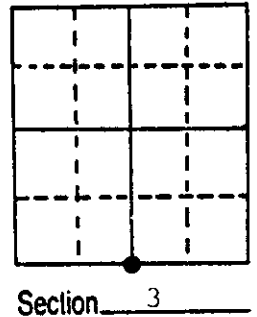


U.S. PUBLIC LAND SURVEY MONUMENT RECORD

Note: This form is intended and designed to fulfill all requirements of Wisconsin Administrative Code, Chapter A-E 5.02, U.S. Public Land Survey Monument Record (3) (a) (b) (c) (d) (e) (f) (g) (h) (i). An additional sheet may be added if necessary to conform with said requirements.

(a) Corner location: Township 38 North
 Range 7 East/West

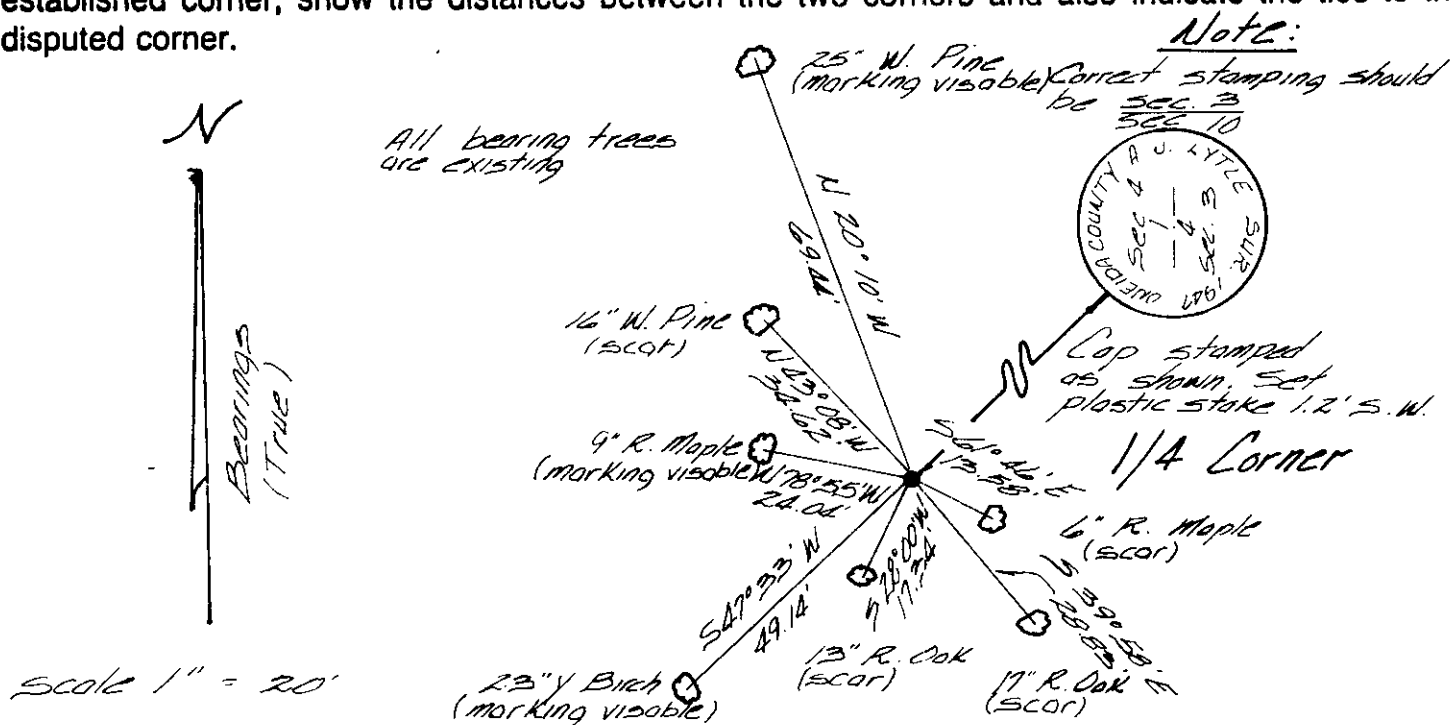
Town/City/Village Lake Tomahawk
 County Oneida



(b) (f) (g) (h) Description of monument found at this corner and if it was accepted, state all evidence (material, testimonial, occupational, plats, records, other monuments) used as a basis for accepting. If not accepted or if nothing was found, state evidence used as basis for establishing location. If reestablished through lost corner proportionate methods, indicate all monuments, distances and directions used to establish.

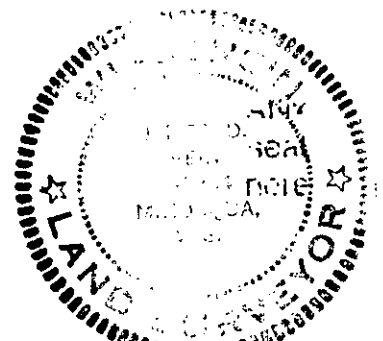
August 1863 - Alexander Anderson (Deputy Surveyor) - Set $\frac{1}{4}$ Section post, bearing trees:
 Ironwood 7", N30°W, 37 links; 6" Maple S60°W, 47 links.
 November 27, 1893 - B.F. Dorr - Found $\frac{1}{4}$ Corner
 March 1947 - A. J. Lytle - Found iron pipe of Vaughan's. Bearing trees: 30" W. Pine, N21°W, 104 links; 15" W. Pine, S24°-30'E, 106 links.
 February 4th, 1988 - James D. Rein, RLS - Found brass capped 2" dia. iron pipe and existing bearing trees as shown below in plan view.
 Note: Distance measurements made to aluminum nails set in center of root crown on side of tree facing corner.

(c) (d) (e) Plan view of corner with ties to at least 4 witness monuments. If in disagreement with previously established corner, show the distances between the two corners and also indicate the ties to the disputed corner.



(i) I, James D. Rein, Registered Land Surveyor No. S-1234
 (type or print name) certify that the corner location on this record was determined by me or under my direction and control and that this U.S. Public Land Survey Monument Record is correct and complete to the best of my knowledge and belief.

James D. Rein Signature
 February 20th, 1988 Date



Index No. E-15

3807030020