

Stock No. 26273

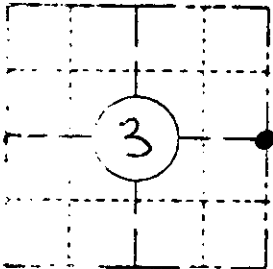
U. S. PUBLIC LAND SURVEY MONUMENT RECORD

INSTRUCTIONS.

This record shall show the location of the corner and shall include all of the following nine elements (a through i).

a) Identify the corner by reference to the U.S. public land survey system.

East 1/4 corner of Section 3
T38N, R7E 4th Prin. Mer.
Lake Tomahawk Twnp.
Oneida County, WI



LOCATION SKETCH

(dot of landmark indicated by "•")



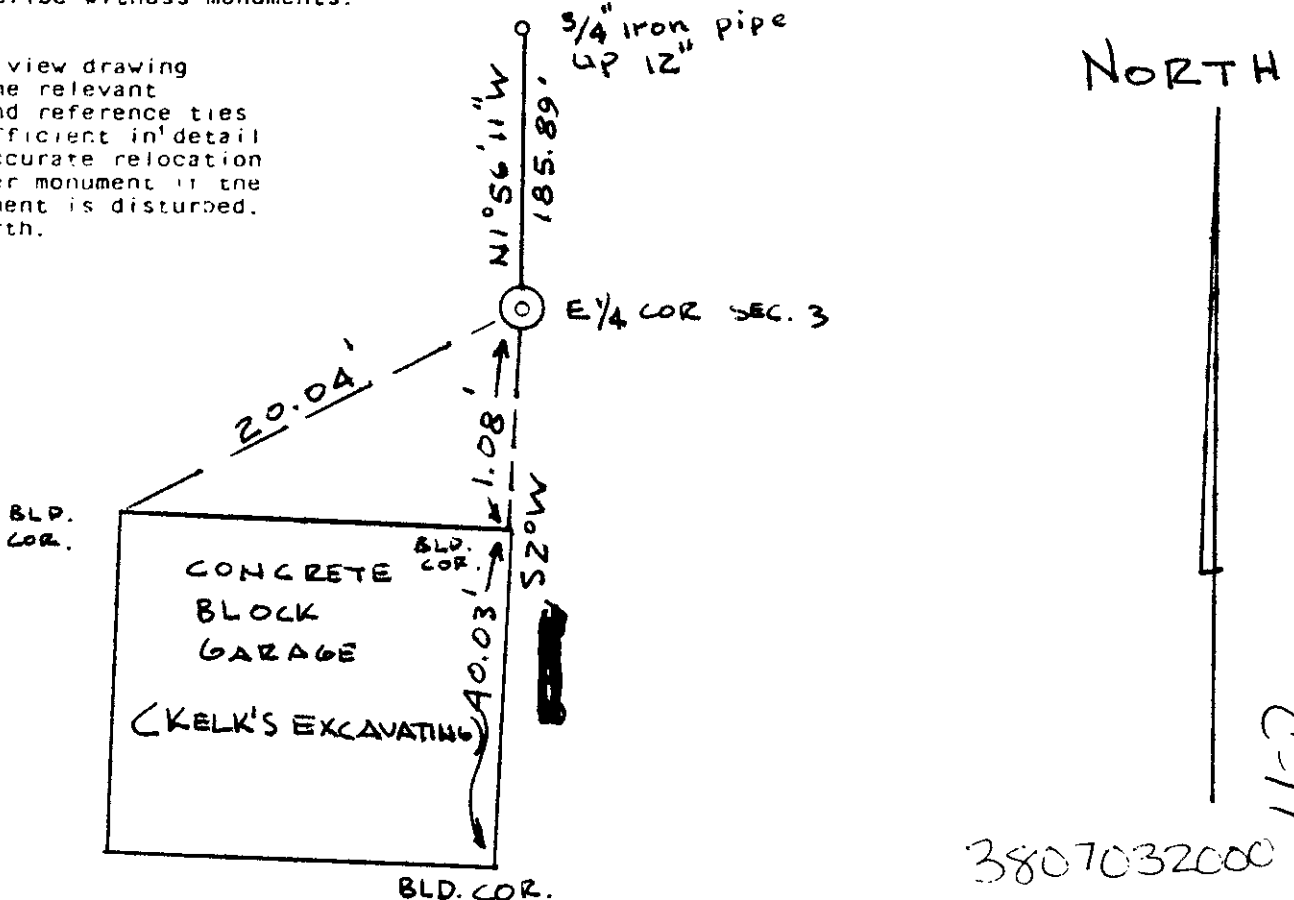
The original corner was set by:
Alexander Anderson in 1863
The original witnesses were:
y-pine 15" SIZE 23ks
no others
No original evidence was found
i.e. no original witnesses

b) Describe any record evidence, monument evidence, occupational evidence, testimonial evidence, any other material evidence you considered, and whether the monument was found or placed.
on January 17, 1983 I found a 2 3/8" O.D. iron pipe with a brass cap.
It protruded from the ground 14". It was stamped A.J. Lytle 1947 Oneida Co.

I found no witnesses.

c) In the plan view drawing below, provide reference ties to at least 4 witness monuments, if the location is within a municipality, to at least 2 witness monuments. Witness monuments shall be made of concrete, natural stone, iron or other equally durable material. Describe witness monuments.

d) Show a plan view drawing depicting the relevant monuments and reference ties which is sufficient in detail to enable accurate relocation of the corner monument if the corner monument is disturbed. Indicate north.



3807032000

C-17

Describe any material discrepancy between the location of the corner as restored or reestablished and the location of that corner as previously restored or established by distance and direction. Show the discrepancy on the plan view drawing indicated above. Show the distances between the corner as restored or reestablished and (1) the corner as restored or reestablished and (2) at least 2 of the witness monuments shown on the drawing in (d) above.

Was the corner restored through acceptance of a separate evidence location, or a found perpetuated location?

A found perpetuated location as stated in (b).

Was the corner reestablished through method, including the directions and evidence or used for proportioning?

No

Compared with all record data and accepted as correct.

Oneida County Surveyor date

REGISTER OF DEEDS OFFICE
ONEIDA COUNTY, WIS.
FILED
JUL 1 1983
Attest: *Sus O'Clock*
DORIS VERAGE KUEHN
REGISTER OF DEEDS



James F. Kasson R.L.S. 1416

I hereby certify that the above is a true and correct copy of the original as shown to me by the surveyor and that the same is a true and correct copy of the original as shown to me by the surveyor.

James F. Kasson

2/15/83

Stock No. 26273

U. S. PUBLIC LAND SURVEY MONUMENT RECORD

INSTRUCTIONS :

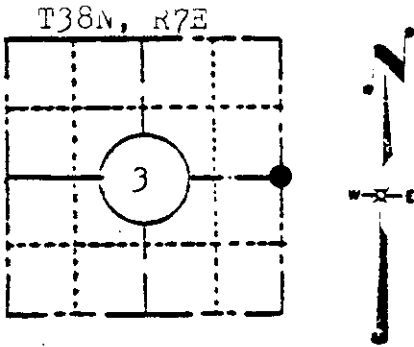
This record shall show the location of the corner and shall include all of the following nine elements (a through i).

- (a) Identify the corner by reference to the U.S. public land survey system.

Original corner was established in the course of the subdivision of T38N, R7E, which commenced Aug. 15, 1863 and was finished Aug. 27, 1863, Alexander Anderson, Deputy Surveyor.

A wooden post was set witnessed by the following bearing tree:

15" Y. Pine, S13 E, 23 links
"No other tree near."



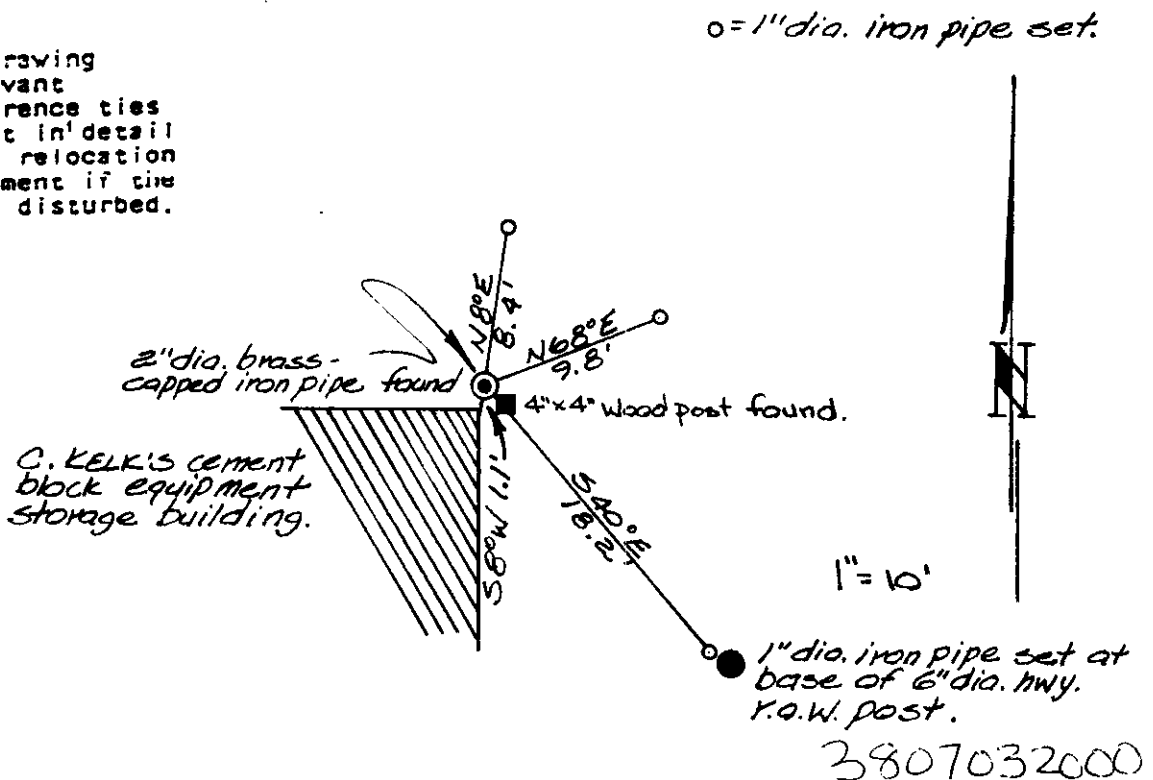
LOCATION SKETCH
(Location of landmark indicated by "●")

- (b) Describe any record evidence, monument evidence, occupational evidence, testimonial evidence or any other material evidence you considered, and whether the monument was found or placed.

Found no evidence of original corner or witness tree. Accepted 2" dia. brass-capped iron pipe set by A.J. Lytle. Said pipe accepted as the perpetuated location of the East 1/4 corner, Sec. 3 by other surveys of record.

- (c) In the plan view drawing below, provide reference ties to at least 4 witness monuments, or, if the location is within a municipality, to at least 2 witness monuments. (Witness monuments shall be made of concrete, natural stone, iron or other equally durable material, except wood.) Describe witness monuments.

- (d) Show a plan view drawing depicting the relevant monuments and reference ties which is sufficient in detail to enable accurate relocation of the corner monument if the corner monument is disturbed. Indicate north.



(e) Describe any material discrepancy between the location of the corner as restored or reestablished and the location of that corner as previously restored or reestablished by distance and direction. Show the discrepancy on the plan view drawing under (d), above. Show the distances between the corner as previously restored or reestablished and (1) the corner as restored or reestablished, and (2) to at least 2 of the witness monuments shown on the drawing in (d), above.

See (b)

f) Was the corner restored through acceptance of (1) an obliterated evidence location, or, (2) a found perpetuated location?

A found perpetuated location. (see b & d)

g&h) Was the corner reestablished through lost corner proportionate methods? If so, show the method, including the directions and distances to other public land survey corners used as evidence or used for proportioning in determining the corner location?

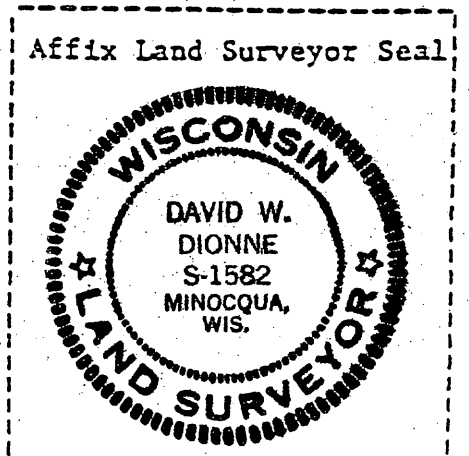
See (f)

REGISTER OF DEEDS OFFICE
ONEIDA COUNTY, WIS.
FILED
JUN 11 1986
At 4:00 O'Clock P.M.
DORIS VERAGE KUEHN
REGISTER OF DEEDS

David W. Dionne ; R.L.S. 1582

(i) I, David W. Dionne (type or print name) certify that the corner location shown on this record was determined by me or under my direction and control and that this U.S. Public Land Survey Monument Record is correct and complete to the best of my knowledge and belief.

David W. Dionne 3/7/84
Signature Date



U.S. PUBLIC LAND SURVEY MONUMENT RECORD

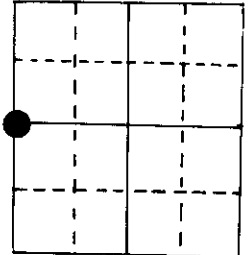
Note: This form is intended and designed to fulfill all requirements of Wisconsin Administrative Code, Chapter A-E 5.02, U.S. Public Land Survey Monument Record (3) (a) (b) (c) (d) (e) (f) (g) (h) (i). An additional sheet may be added if necessary to conform with said requirements.

(a) Corner location: Township 38 North

Range 7 East/West

2" iron pipe w/brass cap
Town/~~City/Village~~ Lake Tomahawk

County Oneida



Section 2

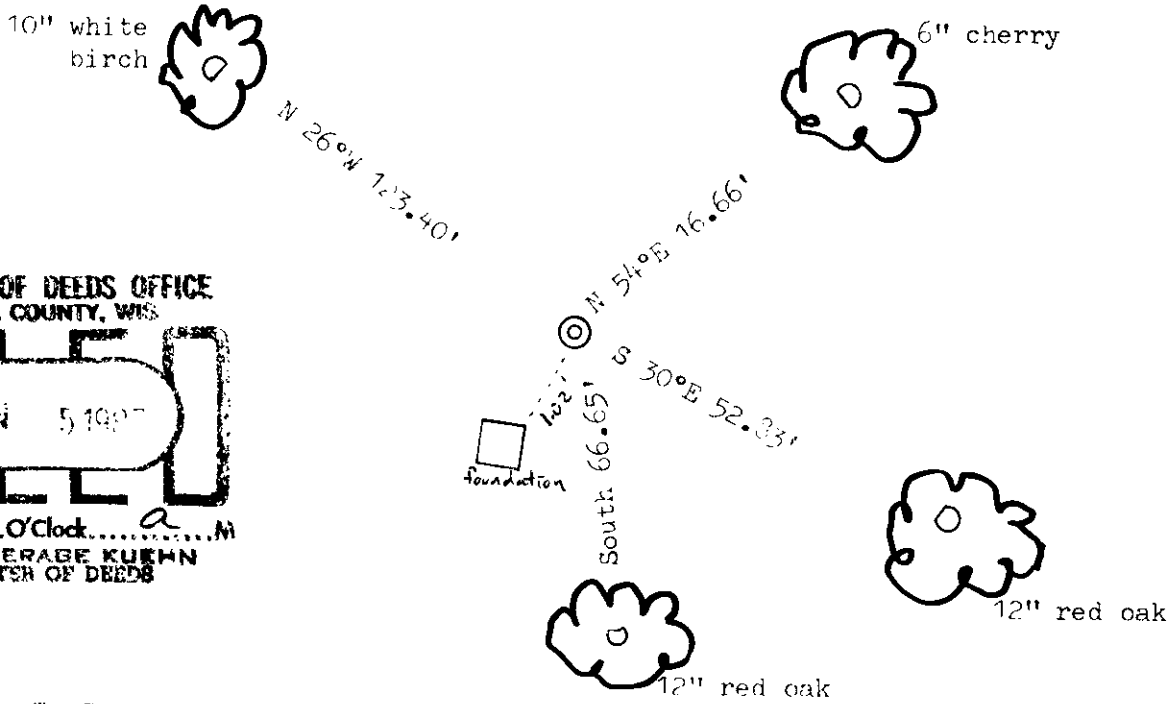
(b) (f) (g) (h) Description of monument found at this corner and if it was accepted, state all evidence (material, testimonial, occupational, plats, records, other monuments) used as a basis for accepting. If not accepted or if nothing was found, state evidence used as basis for establishing location. If reestablished through lost corner proportionate methods, indicate all monuments, distances and directions used to establish.

Brass cap by A.J. Lytle, 1947, was found by R. Ilg in 1965. Ilg's BT's now gone.

Seymour made more BT's in Oct. 1984, while in the process of starting the township resurvey of 38-7.

Now with the Court House records of survey being straightened out I found two other sheets filed for this corner. I am submitting this sheet for information on BT's I made.

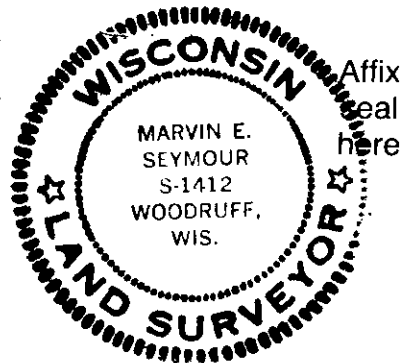
(c) (d) (e) Plan view of corner with ties to at least 4 witness monuments. If in disagreement with previously established corner, show the distances between the two corners and also indicate the ties to the disputed corner.



REGISTER OF DEEDS OFFICE
ONEIDA COUNTY, WIS.
FILED
JUN 5 1987
At 8:00 O'Clock
DORIS VERABE KUEHN
REGISTER OF DEEDS

(i) I, Marvin E. Seymour
(type or print name) certify that the corner location on this record was determined by me or under my direction and control and that this U.S. Public Land Survey Monument Record is correct and complete to the best of my knowledge and belief.

Marvin E. Seymour, Nov 4, 1986
Signature Date



3807032000
C-17

U.S. PUBLIC LAND SURVEY MONUMENT RECORD

REGISTER OF DEEDS OFFICE
ONEIDA COUNTY
FILED

Note: This form is intended and designed to fulfill all requirements of the Wisconsin Administrative Code, Chapter A-E 7.08 U.S. Public Land Monument Record (3)(a)(b)(c)(d)(e)(f)(g)(h)(i). An additional sheet may be added if necessary to conform with said requirements.

NOV 02 2021

KYLE J. FRANSON
REGISTER OF DEEDS

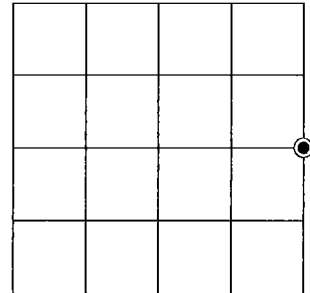
(a) CORNER LOCATION:

East Quarter Corner of Section 3
Township 38 North
Range 7 East
Town Lake Tomahawk
County of Oneida

North:
East:
Datum:
GNSS Method:
GNSS Control:

(RECORDING AREA)

SECTION 3



(b) HISTORY OF ORIGINAL CORNER ESTABLISHMENT

Original Surveyor:
Date of Survey: Commenced
Completed
Original B.T.'S

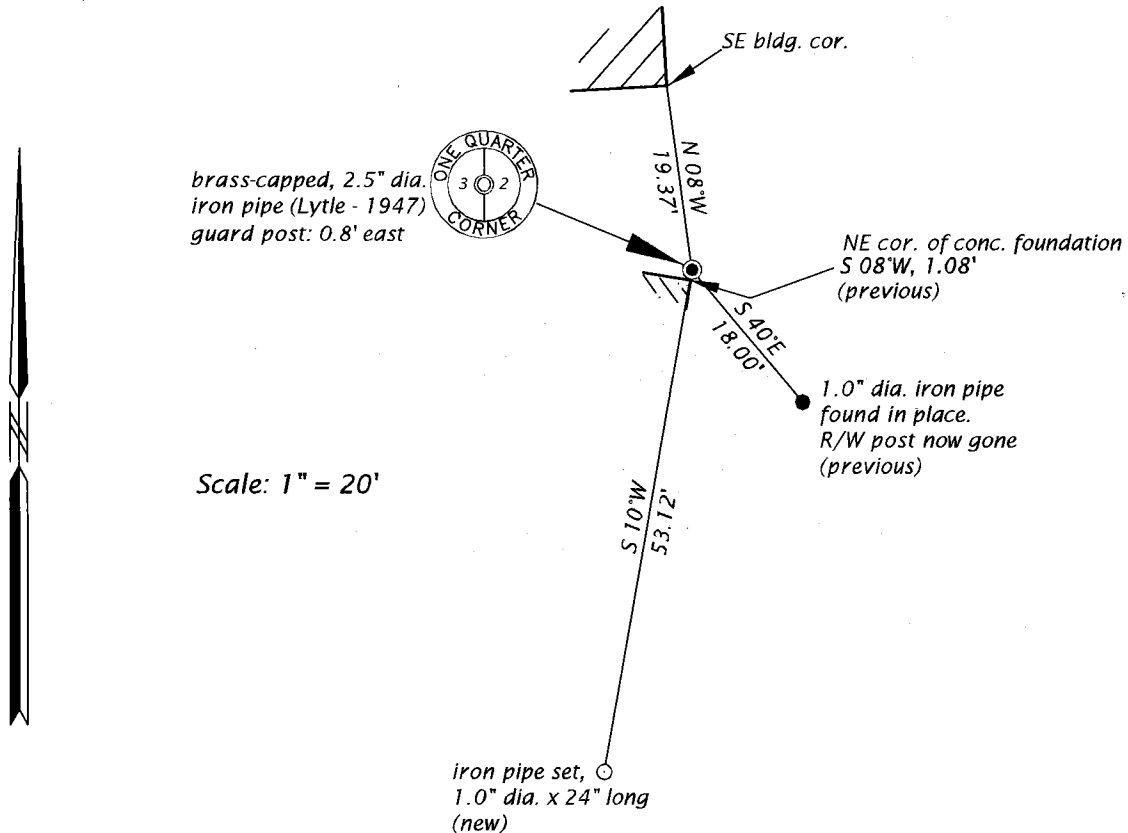
SEE PREVIOUS U.S.P.L.S. MONUMENT RECORDS DATED MARCH 7, 1984, AND NOVEMBER 4, 1986.

(f)(g)(h) DESCRIPTION OF MONUMENT FOUND AT THIS CORNER AND IF IT WAS ACCEPTED, STATE ALL EVIDENCE (MATERIAL, TESTIMONIAL, OCCUPATIONAL, PLATS, RECORD, OTHER MONUMENTS) USED AS A BASIS FOR ESTABLISHING LOCATION. IF NOT ACCEPTED OR IF NOTHING WAS FOUND, STATE EVIDENCE USED AS BASIS FOR ESTABLISHING LOCATION. IF REESTABLISHED THROUGH LOST CORNER PROPORTIONATE METHODS, INDICATE ALL MONUMENTS, DISTANCES AND DIRECTIONS USED TO ESTABLISH. INDICATE TYPE OF MONUMENT AND SIGN POST FOUND OR SET.

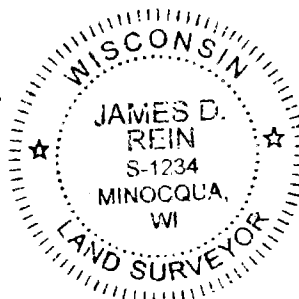
This is a perpetuation of previous U.S.P.L.S. Monument Records by David W. Dionne, RLS, dated March 7, 1984, and Marvin E. Seymour, RLS filed in the office of the Oneida County Register of Deeds. A complete history of the corner can be found on the previous monument records. I accept the previous location as a true and faithful perpetuation or reestablishment of the original corner location and further perpetuate it as follows.

October 6, 2020, we found, and I accepted the brass-capped iron pipe, set by Lytle, as shown on the previous monument records. Dionne's previous northeasterly iron pipe references are now gone as are Seymour's bearing trees. See below for updated references.

(c)(d)(e) PLAN VIEW OF CORNER WITH TIES TO AT LEAST 4 WITNESS MONUMENTS. IF IN DISAGREEMENT WITH PREVIOUSLY ESTABLISHED CORNER, SHOW THE DISTANCE BETWEEN THE TWO CORNERS AND ALSO INDICATE THE TIES TO THE DISPUTED CORNER.



(i) I, JAMES D. REIN, PROFESSIONAL LAND SURVEYOR NO. S-1234 HEREBY CERTIFY THAT THE CORNER LOCATION ON THIS RECORD WAS DETERMINED BY ME OR UNDER MY DIRECTION AND CONTROL AND THAT THIS U.S. PUBLIC LAND SURVEY MONUMENT RECORD IS CORRECT AND COMPLETE TO THE BEST OF MY KNOWLEDGE AND BELIEF.



James D. Rein
SIGNATURE
DATE: Oct 5, 21

INDEX NO. C-17
3807030020
2000