

U.S. PUBLIC LAND SURVEY MONUMENT RECORD

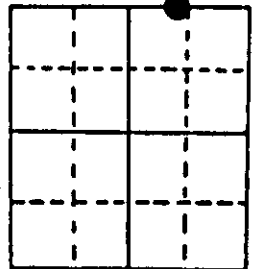
Note: This form is intended and designed to fulfill all requirements of Wisconsin Administrative Code, Chapter A-E 7.08 U.S. Public Land Survey Monument Record (3) (a) (b) (c) (d) (e) (f) (g) (h) (i). An additional sheet may be added if necessary to conform with said requirements.

(a) Corner location: Township 38 North Corner: North Line of Section 9

Section 9 Range 7 East Original Surveyor: A. Anderson

Town/City/Village Lake Tomahawk Original B.T.'s: 15" Py N17°E 39 lks
12" Pw N83°E 12 lks

County Oneida

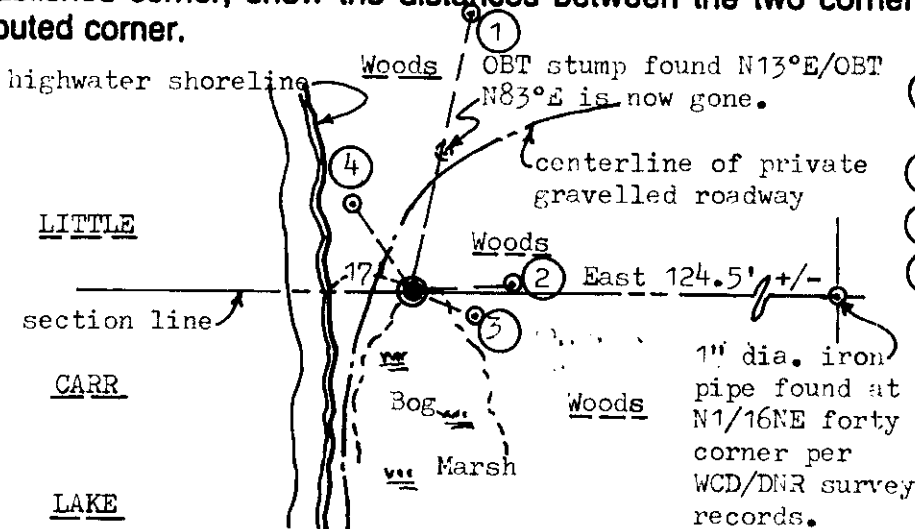


Original Survey Date: August 1863 ● Location

(b) (f) (g) (h) Description of monument found at this corner and if it was accepted, state all evidence (material, testimonial, occupational, plats, records, other monuments) used as a basis for accepting. If not accepted or if nothing was found, state evidence used as basis for establishing location. If reestablished through lost corner proportionate methods, indicate all monuments, distances and directions used to establish. Indicate type of monument found or set and sign post.

Found and accepted a standard 2" dia. iron pipe monument with stamped WCD brass cap 9" above grade and tipped 15° East at corner location; I replumbed and secured the monument at base with several rocks on the east shoulder of existing private roadway westerly and southerly from south end of Snipe Road, and measured new ties indicated below. In 1941, Hassler and Mentz found an old scribed square wood post at corner and badly decayed Py OBT stump N17°E 0.390 chains, and replaced wood post with standard WCD capped iron pipe monument 15" high; their new BTs 16" Or S83°E now 22" Or S75°E with no visible markings at 0.347 chains, and their 10" Pw 10 ft. high stub is now gone. Later, Berndt/WCD noted corner monument OK and new BT 10" Or N02°W 0.788 chains that is now 15" Or (east trunk of twin) with markings also evidenced. WCD/Wis DNR records at Trout Lake also indicate that the MC corner is 21.43 +/- chains West of NE corner of Section 9. In 1986, Seymour/Wis DNR surveyor found WCD capped iron pipe monument at corner OK and noted new BTs, 14" Or N21°E 73.07' now same with upper and lower face blazes open and plain, 8" Mr N86°E 19.80 found OK and used for new ties, and his 12" Bw S53°E 27.00' is now a low cut and badly rotting stump. I also found an 8" long piece of old square wood post and badly rotted near corner monument and a red top 1x2 guard stake broken off nearby. Recovery completed 6/14/97 and witnessed by adjacent owner noted below

(c) (d) (e) Plan view of corner with ties to at least 4 witness monuments. If in disagreement with previously established corner, show the distances between the two corners and also indicate the ties to the disputed corner.



Witness Monument Ties:

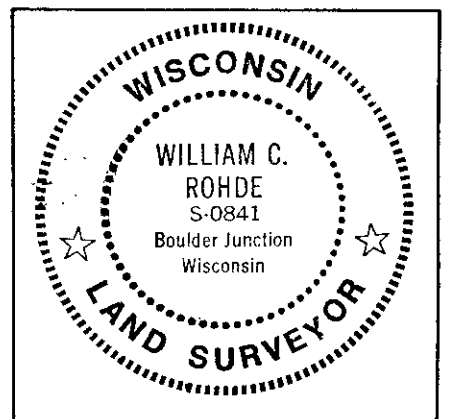
- ① New BT 10" Oak (East trunk of twin) N11°E 59.78'.
- ② Record BT 9" Mr N86°E 20.16'.
- ③ New BT 7" Mr S70°E 13.96'.
- ④ New BT 6" Pw N34°W 21.74'.

Note: Standard white poly 'T' corner marker post set 1 ft. East of corner monument.
Recovery witnessed by owner of cabin rental business to east of corner on hill.

Unless otherwise indicated, all BT witness monument ties are to a 1/4" dia. by 2.5" long PK nail with 1.25" dia. steel washer set in unblazed right face bark; and a PK nail with 2" dia. steel washer stamped BT also set in unblazed front face bark of each BT at DBH. All previous corner recovery notes from Wisconsin DNR and/or Oneida County survey records.

Scale: 1" = 40'

(i) I, William C. Rohde, RLS 841
(type or print name) certify that the corner location on this record was determined by me or under my direction and control and that this U.S. Public Land Survey Monument Record is correct and complete to the best of my knowledge and belief.



Index No. E 11 12

William C. Rohde June 18, 1997
Signature Date

3807040012