

U.S. PUBLIC LAND SURVEY MONUMENT RECORD

Note: This form is intended and designed to fulfill all requirements of Wisconsin Administrative Code, Chapter A-E 7.08 U.S. Public Land Survey Monument Record (3) (a) (b) (c) (d) (e) (f) (g) (h) (i). An additional sheet may be added if necessary to conform with said requirements.

(a) Corner location: Township 38 North Corner: Wit EMC - North Line

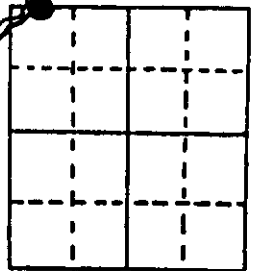
Section 9 Range 7 East Original Surveyor: A. Anderson/GLO

Town/City/Village Lake Tomahawk

Original B.T.'s: 14" Pw S38°E 19 lks
12" Pw N15°E 20 lks

County Oneida

Original Survey Date: August 1863

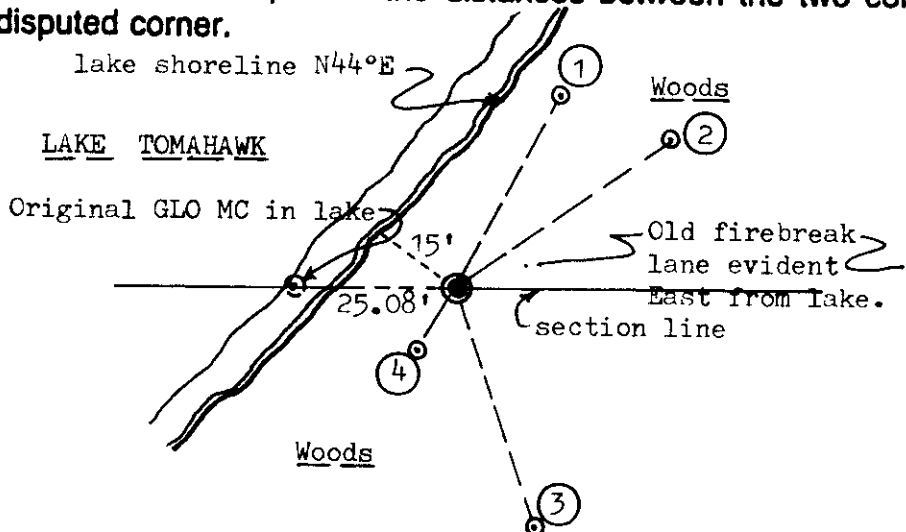


● Location

(b) (f) (g) (h) Description of monument found at this corner and if it was accepted, state all evidence (material, testimonial, occupational, plats, records, other monuments) used as a basis for accepting. If not accepted or if nothing was found, state evidence used as basis for establishing location. If reestablished through lost corner proportionate methods, indicate all monuments, distances and directions used to establish. Indicate type of monument found or set and sign post.

Found and accepted a standard 1.5" dia. iron pipe monument with stamped GLO cap undisturbed 6" above grade near south edge of old East/West fire break. Both GLO BTs evidenced but not reliable for positioning accuracy. In 1927, Harrington/GLO during a Resurvey located the original GLO survey MC location from found SE and NE GLO OBT stumps, which fell in 2 feet of lake water, so he set above GLO iron pipe monument on section line as a Wit MC 38 links East of original GLO MC point, and marked new BTs: 8" Pn N01°E 38 lks is now a 16" Pn N05°E tipped 45°+/- NW at lake shoreline due to bank erosion, and his 10" Pn S17°45'W 98 links is now a 16" Pn S20°W with lower face blaze shut but plain. Later on unknown date, WCD survey notes indicate that the 1927 GLO monument and BTs were found OK and marked new BTs: 8" H. N50°E 0.622 ch found as 11" H. and used for new ties below, and 12" Bw S34°E 0.473 ch is now 14" trunk of twin Bw S30°E. In 1984, Seymour/DNR found GLO monument and BTs OK and he marked new BTs: 12" Bw N13°E 17.96' is now a 10" Bw N15°E with upper & lower face blazes partly shut but plain, and his 20" Pn S27°W 68.91' is now a 16" Pn S27°W with upper/lower face blazes partly shut but plain. Although several record BTs were found to perpetuate the corner location, I selected three(3) new younger BTs for ties below. Recovery completed October 18, 1996; no witnesses.

(c) (d) (e) Plan view of corner with ties to at least 4 witness monuments. If in disagreement with previously established corner, show the distances between the two corners and also indicate the ties to the disputed corner.



Witness Monument Ties:

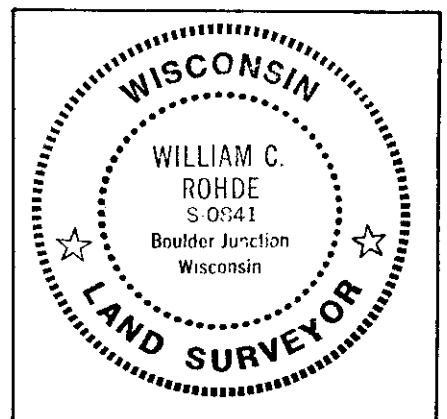
- ① 5" H. New BT N28°E 34.85'.
- ② 11" H. Record BT N55°E 40.86'.
- ③ 7" H. New BT S17°E 39.26'.
- ④ 6" H. New BT S32°W 11.58'.

Note: Standard white fiberglass corner marker post set 1 foot N65°W from monument.

Unless otherwise indicated, all BT witness monument ties are to a 1/4" dia. by 2.5" long PK nail with 1.25" dia. steel washer set in unblazed right face bark; and a PK nail with 2" dia. steel washer stamped BT also set in unblazed front face bark of each BT at DBH. All previous corner recovery notes from Wisconsin DNR and/or Oneida County survey records.



Scale: 1" = 30'



(i) I, William C. Rohde, RLS 841
(type or print name) certify that the corner location on this record was determined by me or under my direction and control and that this U.S. Public Land Survey Monument Record is correct and complete to the best of my knowledge and belief.

William C. Rohde
Signature

March 27, 1997
Date

SHEET 1 OF 1

3807040036

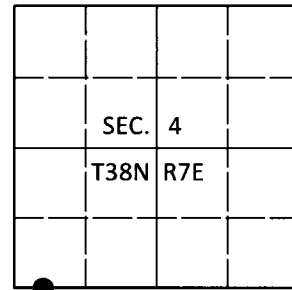
Index No. E 9-10

U.S. PUBLIC LAND SURVEY MONUMENT RECORD

Note: This form is intended and designed to fulfill all requirements of Wisconsin Administrative Code, Chapter A-E 7.08 U.S. Public Land Survey Monument Record (3)(a-i).

(a) CORNER LOCATION
 Wit. Meander Cor. of Secs. 4 & 9
 Township 38 North
 Range 7 East of the 4th P.M.
 Town of Lake Tomahawk
 County of Oneida

WISCRS - Oneida County
 N: 225,544.55 USft
 E: 208,305.14 USft
 Datum: NAD 83(2011)
 GNSS Method: RTN - Offset
 GNSS Control: WISCORS VRS



WCMC

(b) HISTORY OF ORIGINAL CORNER ESTABLISHMENT

Original Surveyor:

Original Accessories:

Date of Survey

Commenced:
Completed:

See previous USPLS Monument Record

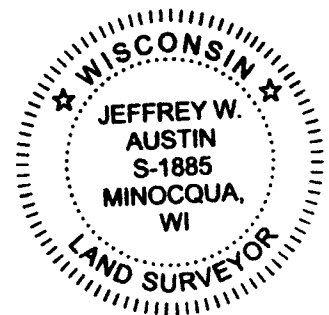
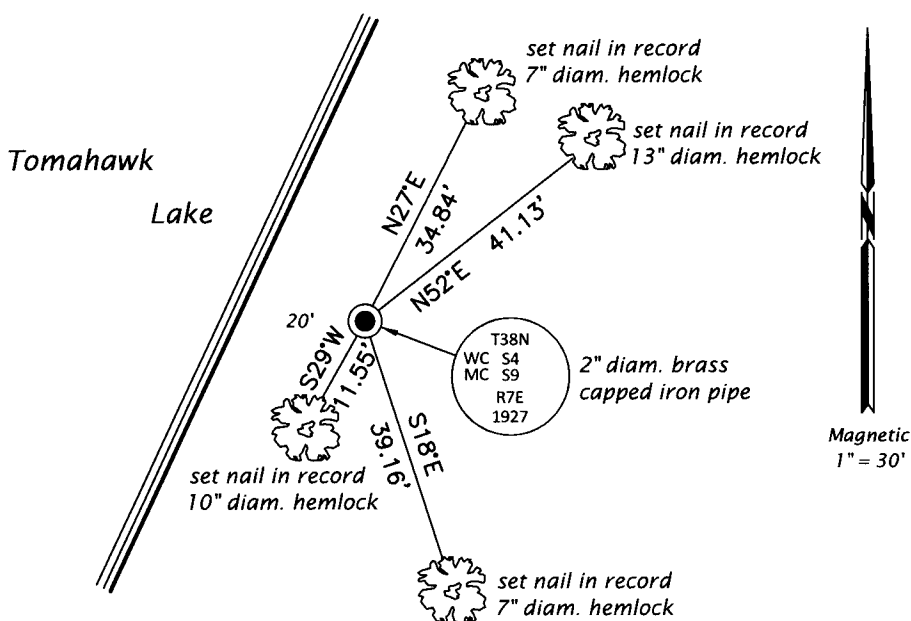
(b)(f)(g)(h) Description of monument found at this corner and if it was accepted, state all evidence (material, testimonial, occupational, plats, records, other monuments) used as a basis for accepting. If not accepted or if nothing was found, state evidence used as basis for establishing location. If re-established through lost corner proportionate methods, indicate all monuments, distances and directions used to establish. Indicate type of monument and sign post found or set.

This is a perpetuation of a previous USPLS Monument Record by William C. Rohde, RLS dated Mar. 27, 1997 and filed in the office of the Oneida County Register of Deeds. A complete history of the corner can be found on the previous monument record. I accept the previous location as a true and faithful perpetuation or reestablishment of the original corner location and further perpetuate it as follows.

Jan. 10, 2019: I found and accepted the record monument, a 2" diam. iron pipe with a 2-1/2" diam. GLO brass cap projecting 4" above the ground surface. I found or established accessories as shown below. I found a white vinyl sign post bearing Northwest, 1.0 ft.

The coordinate value shown has been verified by at least one of the following methods: 1) comparison to a previously GPS determined published value; 2) the value is the average of two or more GPS observations at a markedly different time; 3) one or more distances were measured back to the GPS observed corner from temporary GPS observed offset locations.

(c)(d)(e) Plan view of corner with ties to at least 4 witness monuments. If in disagreement with previously established corner, show the distances between the two corners and also indicate the ties to the disputed.

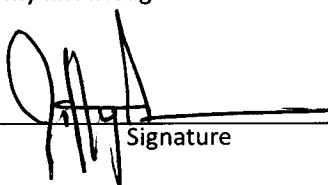


REGISTER OF DEEDS OFFICE
 ONEIDA COUNTY
 FILED

FEB 19 2019

KYLE J. FRANSON
 REGISTER OF DEEDS

(i) I, Jeffrey W. Austin, Professional Land Surveyor No. S-1885, hereby certify that the corner location on this record was determined by me or under my direction and control and that this U.S. Public Land Survey Monument Record is correct and complete to the best of my knowledge and belief.


 Signature

31 JAN 2019
 Date

3807040036 (INDEX NO. E-9,10)