

U.S. PUBLIC LAND SURVEY MONUMENT RECORD

REGISTER OF DEEDS OFFICE
ONEIDA COUNTY
WI
FILED

APR 17 2018

JOYLE J. FRANKSON
REGISTER OF DEEDS

Note: This form is intended and designed to fulfill all requirements of the Wisconsin Administrative Code, Chapter A-E 7.08 U.S. Public Land Monument Record (3)(a)(b)(c)(d)(e)(f)(g)(h)(i). An additional sheet may be added if necessary to conform with said requirements.

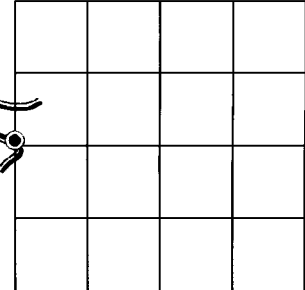
(a) CORNER LOCATION:

North Meander Corner of Section 3 in bay
Township 38 North
Range 7 East
Town of Lake Tomahawk
County of Oneida

North:
East:
Datum:
GNSS Method:
GNSS Control:

(RECORDING AREA)

SECTION 3



(b) HISTORY OF ORIGINAL CORNER ESTABLISHMENT

Original Surveyor:
Date of Survey: Commenced
Completed
Original B.T.'S:

**NOT PART OF
U.S.P.L.S.**

(f)(g)(h) DESCRIPTION OF MONUMENT FOUND AT THIS CORNER AND IF IT WAS ACCEPTED, STATE ALL EVIDENCE (MATERIAL, TESTIMONIAL, OCCUPATIONAL, PLATS, RECORD, OTHER MONUMENTS) USED AS A BASIS FOR ESTABLISHING LOCATION. IF NOT ACCEPTED OR IF NOTHING WAS FOUND, STATE EVIDENCE USED AS BASIS FOR ESTABLISHING LOCATION. IF REESTABLISHED THROUGH LOST CORNER PROPORTIONATE METHODS, INDICATE ALL MONUMENTS, DISTANCES AND DIRECTIONS USED TO ESTABLISH. INDICATE TYPE OF MONUMENT AND SIGN POST FOUND OR SET.

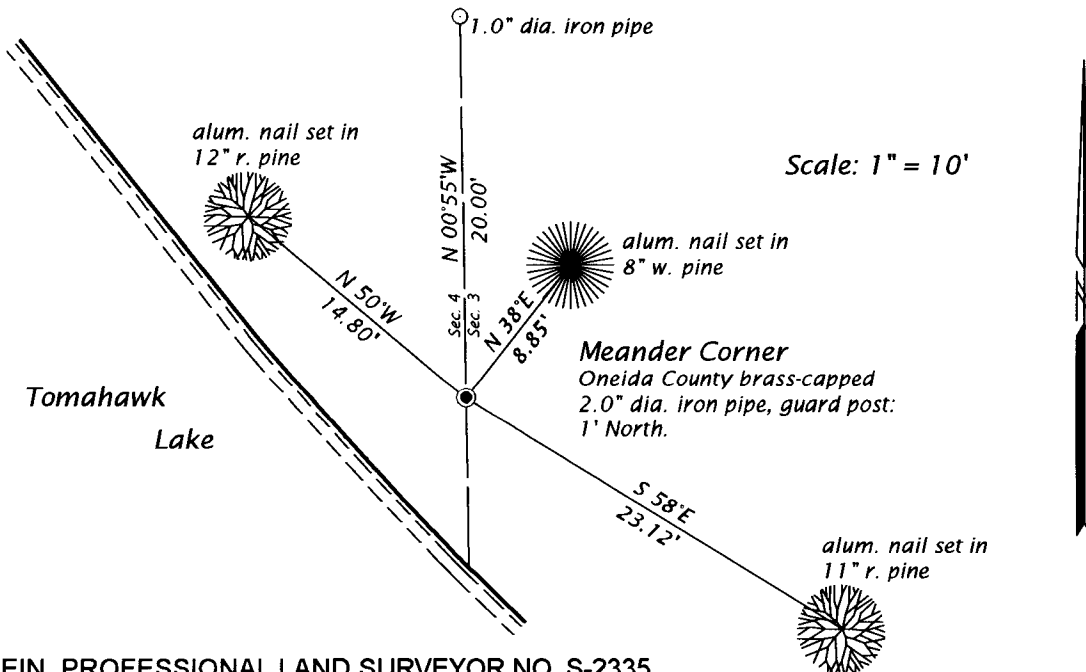
May 8, 1947 - A. J. Lytle, County Surveyor, map of Section 3, filed as C1390, and accompanying field notes in Old Field Book 21, pages 69 through 75. set MC @ 42.95 chains north of section corner. Bearing tree: B. Oak 8", N56°30'W, 21 1/4 links.

March 1958 - E. F. Kowalke, LS No. 403, map of survey for Resurvey of Sections 3 & 4, T38N, R7E, filed as C2220, does not accept Lytle's meander corner.

August 22, 2002 - James D. Rein, LS No. 1234, Oneida County Certified Survey Map. No. 2714, recorded in Volume 11, CSM on page 2714 describes the Lytle meander corner monumented by an Oneida County brass capped 2.4" diameter iron pipe found in place on the A. J. Lytle section line, and is also tied to a W.C.D. brass capped 2.4" diameter iron pipe on the E. F. Kowalke section line. A quit claim deed recorded in Volume 239 Deeds, pages 266 through 267, as Document No. 184766, was granted by the State Conservation Commission of Wisconsin to Mrs. I. J. Ebert to resolve the conflict.

(Continued on reverse page)

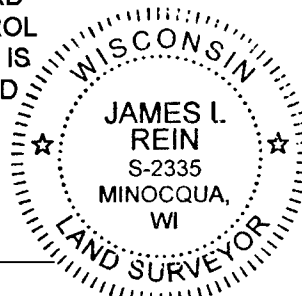
(c)(d)(e) PLAN VIEW OF CORNER WITH TIES TO AT LEAST 4 WITNESS MONUMENTS. IF IN DISAGREEMENT WITH PREVIOUSLY ESTABLISHED CORNER, SHOW THE DISTANCE BETWEEN THE TWO CORNERS AND ALSO INDICATE THE TIES TO THE DISPUTED CORNER.



(i) I, JAMES L. REIN, PROFESSIONAL LAND SURVEYOR NO. S-2335 HEREBY CERTIFY THAT THE CORNER LOCATION ON THIS RECORD WAS DETERMINED BY ME OR UNDER MY DIRECTION AND CONTROL AND THAT THIS U.S. PUBLIC LAND SURVEY MONUMENT RECORD IS CORRECT AND COMPLETE TO THE BEST OF MY KNOWLEDGE AND BELIEF.

[Handwritten Signature]
SIGNATURE

10/30/17
DATE



INDEX NO. B-C 13
3807042300

(Continued from reverse page)

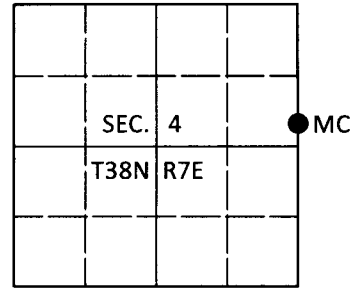
August 30, 2017 - James L. Rein, PLS No. 2335, Although this meander corner was never established by the original government survey, and the true line never adjudicated, I accept the A. J. Lytle corner position as marking the line common to Sections 3 and 4, because he used acceptable surveying principals, was acting in his official capacity as Oneida County Surveyor, at the request of the Lake Tomahawk town board and filed a record of his survey. Corners and lines based upon this survey have been accepted as correct by the property owners in this section for the past 70 years.

U.S. PUBLIC LAND SURVEY MONUMENT RECORD

Note: This form is intended and designed to fulfill all requirements of Wisconsin Administrative Code, Chapter A-E 7.08 U.S. Public Land Survey Monument Record (3)(a-i).

(a) CORNER LOCATION
 Meander Cor. of Secs. 3 & 4
 Township 38 North
 Range 7 East of the 4th P.M.
 Town of Lake Tomahawk
 County of Oneida

WISCRS - Oneida County
 N: 228,450.97 USft
 E: 212,964.18 USft
 Datum: NAD 83(2011)
 GNSS Method: RTN - Direct
 GNSS Control: WISCORS VRS



(b) HISTORY OF ORIGINAL CORNER ESTABLISHMENT

Original Surveyor:

Original Accessories:

Date of Survey

Commenced:
 Completed:

See previous USPLS Monument Record

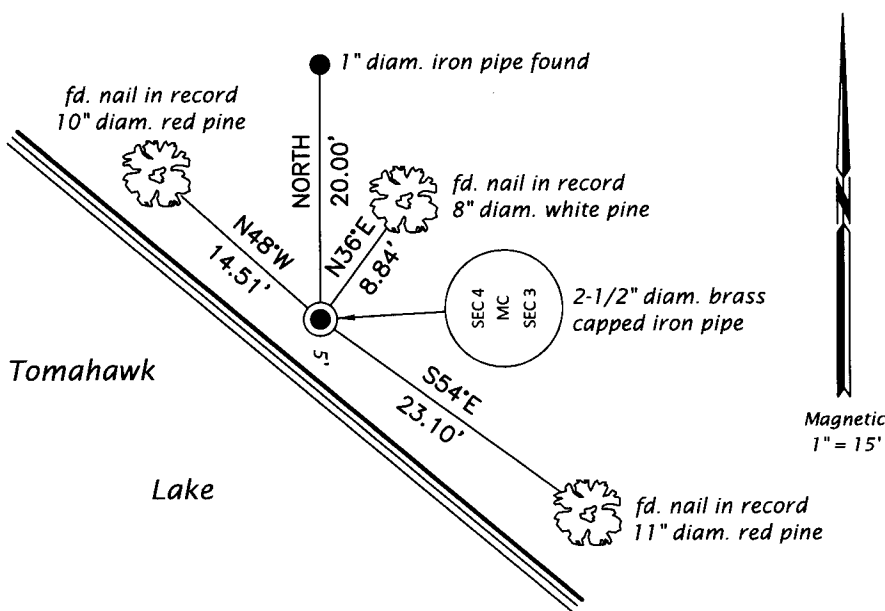
(b)(f)(g)(h) Description of monument found at this corner and if it was accepted, state all evidence (material, testimonial, occupational, plats, records, other monuments) used as a basis for accepting. If not accepted or if nothing was found, state evidence used as basis for establishing location. If re-established through lost corner proportionate methods, indicate all monuments, distances and directions used to establish. Indicate type of monument and sign post found or set.

This is a perpetuation of a previous USPLS Monument Record by James L. Rein, RLS dated Oct. 30, 2017 and filed in the office of the Oneida County Register of Deeds. A complete history of the corner can be found on the previous monument record. I accept the previous location as a true and faithful perpetuation or reestablishment of the original corner location and further perpetuate it as follows.

Jan. 8, 2019: I found and accepted the record monument, a 2-1/2" diam. iron pipe with a 2-1/2" diam. Lytle brass cap (1947) flush with the ground surface. I found or established accessories as shown below. I found a white vinyl sign post bearing North, 0.7 ft.

The coordinate value shown has been verified by at least one of the following methods: 1) comparison to a previously GPS determined published value; 2) the value is the average of two or more GPS observations at a markedly different time; 3) one or more distances were measured back to the GPS observed corner from temporary GPS observed offset locations.

(c)(d)(e) Plan view of corner with ties to at least 4 witness monuments. If in disagreement with previously established corner, show the distances between the two corners and also indicate the ties to the disputed.

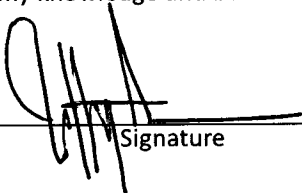


REGISTER OF DEEDS OFFICE
 ONEIDA COUNTY
 FILED

FEB 19 2019

KYLE J. FRANSON
 REGISTER OF DEEDS

(i) I, Jeffrey W. Austin, Professional Land Surveyor No. S-1885, hereby certify that the corner location on this record was determined by me or under my direction and control and that this U.S. Public Land Survey Monument Record is correct and complete to the best of my knowledge and belief.


 Signature

1 FEB 2019
 Date