

# U.S. PUBLIC LAND SURVEY MONUMENT RECORD

REGISTER OF DEEDS OFFICE  
ONEIDA COUNTY  
FILED

Note: This form is intended and designed to fulfill all requirements of the Wisconsin Administrative Code, Chapter A-E 7.08 U.S. Public Land Monument Record (3)(a)(b)(c)(d)(e)(f)(g)(h)(i). An additional sheet may be added if necessary to conform with said requirements.

APR 17 2018

KYLE J. FRANSON  
REGISTER OF DEEDS

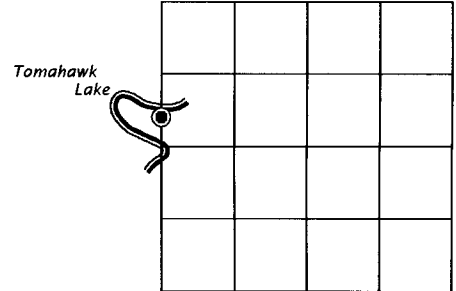
**(a) CORNER LOCATION:**

North Meander Corner of Section 3  
Township 38 North  
Range 7 East  
Town of Lake Tomahawk  
County of Oneida

North:  
East:  
Datum:  
GNSS Method:  
GNSS Control:

(RECORDING AREA)

**SECTION 3**



**(b) HISTORY OF ORIGINAL CORNER ESTABLISHMENT**

Original Surveyor: Alexander Anderson  
Date of Survey: Commenced August 15, 1863  
Completed August 27, 1863  
Original B.T.'S: Birch, 9", S 3-1/2°W, 9 lks.  
Birch, 9", S 77-1/2°E, 7 lks.

(f)(g)(h) DESCRIPTION OF MONUMENT FOUND AT THIS CORNER AND IF IT WAS ACCEPTED, STATE ALL EVIDENCE (MATERIAL, TESTIMONIAL, OCCUPATIONAL, PLATS, RECORD, OTHER MONUMENTS) USED AS A BASIS FOR ESTABLISHING LOCATION. IF NOT ACCEPTED OR IF NOTHING WAS FOUND, STATE EVIDENCE USED AS BASIS FOR ESTABLISHING LOCATION. IF REESTABLISHED THROUGH LOST CORNER PROPORTIONATE METHODS, INDICATE ALL MONUMENTS, DISTANCES AND DIRECTIONS USED TO ESTABLISH. INDICATE TYPE OF MONUMENT AND SIGN POST FOUND OR SET.

June 24, 1893 B. F. Dorr, County Surveyor, Old Field Book 22, page 75, in Section 4, T38N, R7E, did not find E 1/4 P, or M.C., ran to M.C. on north side of lake.

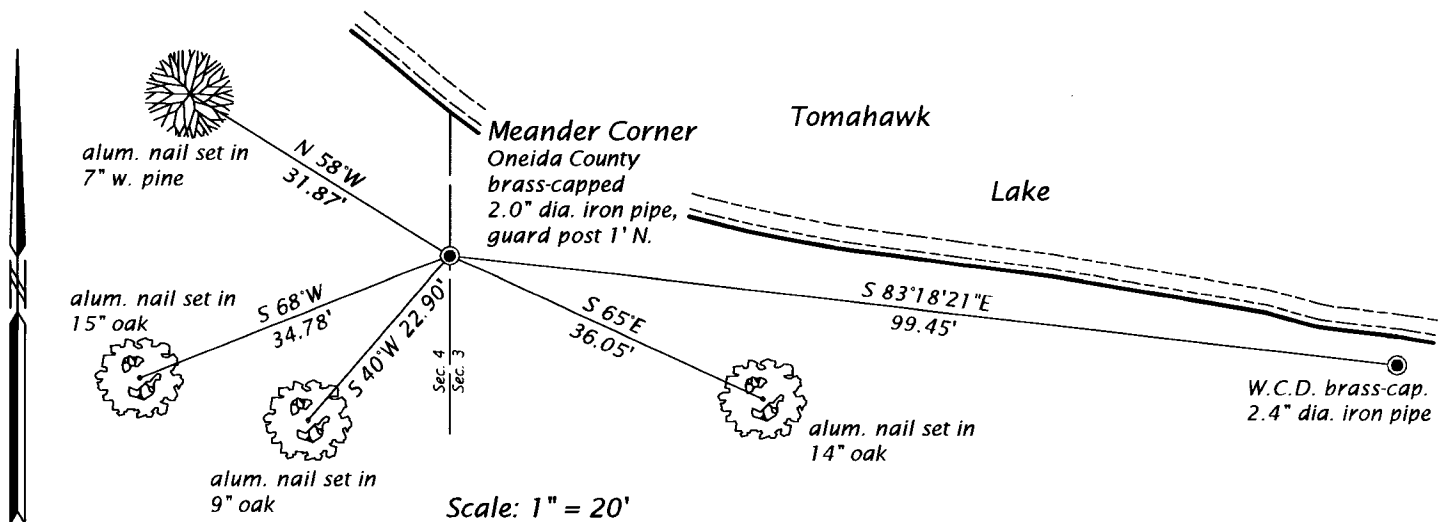
Feb. 1933 Ray H. Hall, Dep. County Surveyor, compilation map filed as C2540, indicates meander corner by Vaughan, referenced by an Aspen 7" N16°W, 2.6 feet and an Aspen 8" S82°W, 14.5 feet.

May 8, 1947 A. J. Lytle, County Surveyor, map of Section 3, filed as C1390 and accompanying field notes filed in Old Field Book 21, pages 69 through 75, set MC @ 47.81 chains north of southwest section corner "said to be Vaughans no record of it". Lytle set a county monument referenced by a B. Oak 12", S54°W, 43 links.

March 1958 E. F. Kowalke, LS No. 403, map survey for Resurvey of Sections 3 and 4, T38N, R7E, filed as C2220, describes meander corner as W.C.D. brass cap iron pipe referenced by a Birch 7" S85°W, 8.8 feet and an Aspen 10" S42°E, 6.8 feet and Lytles meander corner 102 feet westerly.

(Continued on reverse page)

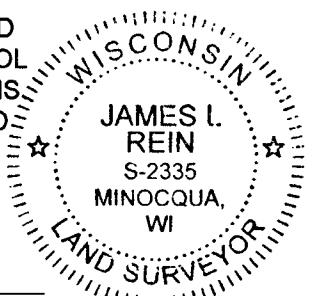
(c)(d)(e) PLAN VIEW OF CORNER WITH TIES TO AT LEAST 4 WITNESS MONUMENTS. IF IN DISAGREEMENT WITH PREVIOUSLY ESTABLISHED CORNER, SHOW THE DISTANCE BETWEEN THE TWO CORNERS AND ALSO INDICATE THE TIES TO THE DISPUTED CORNER.



(i) I, JAMES L. REIN, PROFESSIONAL LAND SURVEYOR NO. S-2335 HEREBY CERTIFY THAT THE CORNER LOCATION ON THIS RECORD WAS DETERMINED BY ME OR UNDER MY DIRECTION AND CONTROL AND THAT THIS U.S. PUBLIC LAND SURVEY MONUMENT RECORD IS CORRECT AND COMPLETE TO THE BEST OF MY KNOWLEDGE AND BELIEF.

*[Handwritten Signature]*

10/30/17  
DATE



INDEX NO. B-C 13  
3807042500

(Continued from reverse page)

August 22, 2002 James D. Rein, L.S. No. 1234, Oneida County Certified Survey Map. No. 2714, recorded in Volume 11, CSM on page 2714 describes the Lytle meander corner monumented by an Oneida County brass capped 2.4" diameter iron pipe found in place on the A. J. Lytle section line, and is also tied to a W.C.D. brass capped 2.4" diameter iron pipe on the E. F. Kowalke section line. A quit claim deed recorded in Volume 239 Deeds, pages 266 through 267, as Document No. 184766 was granted by the State Conservation Commission of Wisconsin to Mrs. I. J. Ebert to resolve the conflict.

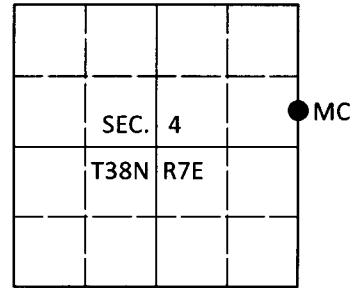
August 30, 2017 James L. Rein, PLS No. 2335, although the true meander corner position has never been adjudication, I accept the A. J. Lytle corner position because he used acceptable surveying principals, was acting in his official capacity as Oneida County Surveyor at the request of the Lake Tomahawk town board and filed a record of his survey. Corners and lines based upon this survey have been accepted as correct by the property owners in this section for the past 70 years. The reference ties are shown in the plan view.

# U.S. PUBLIC LAND SURVEY MONUMENT RECORD

Note: This form is intended and designed to fulfill all requirements of Wisconsin Administrative Code, Chapter A-E 7.08 U.S. Public Land Survey Monument Record (3)(a-i).

(a) CORNER LOCATION  
 Meander Cor. of Secs. 3 & 4  
 Township 38 North  
 Range 7 East of the 4th P.M.  
 Town of Lake Tomahawk  
 County of Oneida

WISCRS - Oneida County  
 N: 228,770.21 USft  
 E: 212,959.11 USft  
 Datum: NAD 83(2011)  
 GNSS Method: RTN - Direct  
 GNSS Control: WISCRS VRS



(b) HISTORY OF ORIGINAL CORNER ESTABLISHMENT

Original Surveyor:

Original Accessories:

Date of Survey Commenced:  
 Completed:

See previous USPLS Monument Record

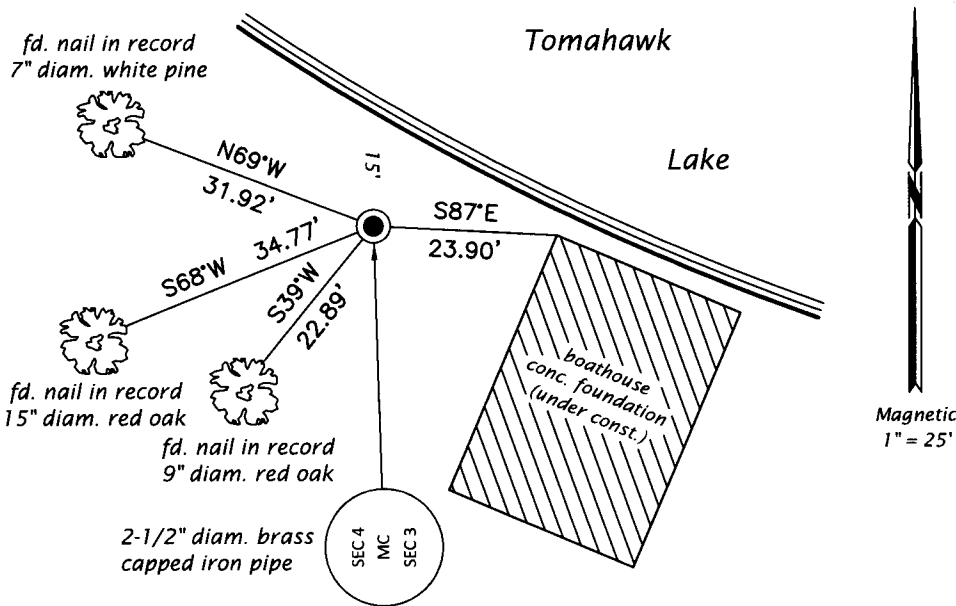
(b)(f)(g)(h) Description of monument found at this corner and if it was accepted, state all evidence (material, testimonial, occupational, plats, records, other monuments) used as a basis for accepting. If not accepted or if nothing was found, state evidence used as basis for establishing location. If re-established through lost corner proportionate methods, indicate all monuments, distances and directions used to establish. Indicate type of monument and sign post found or set.

*This is a perpetuation of a previous USPLS Monument Record by James L. Rein, RLS dated Oct. 30, 2017 and filed in the office of the Oneida County Register of Deeds. A complete history of the corner can be found on the previous monument record. I accept the previous location as a true and faithful perpetuation or reestablishment of the original corner location and further perpetuate it as follows.*

*Jan. 8, 2019: I found and accepted the record monument, a 2-1/2" diam. iron pipe with a 2-1/2" diam. Lytle brass cap (1947) projecting 18" above the ground surface. The record bearing tree at S65°E is gone. I found or established accessories as shown below. I found a white vinyl sign post bearing North, 0.7 ft.*

*The coordinate value shown has been verified by at least one of the following methods: 1) comparison to a previously GPS determined published value; 2) the value is the average of two or more GPS observations at a markedly different time; 3) one or more distances were measured back to the GPS observed corner from temporary GPS observed offset locations.*

(c)(d)(e) Plan view of corner with ties to at least 4 witness monuments. If in disagreement with previously established corner, show the distances between the two corners and also indicate the ties to the disputed.

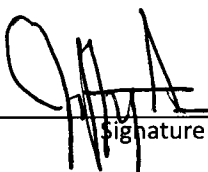


REGISTER OF DEEDS OFFICE  
 ONEIDA COUNTY  
 FILED

FEB 19 2019

KYLE J. FRANSON  
 REGISTER OF DEEDS

(i) I, Jeffrey W. Austin, Professional Land Surveyor No. S-1885, hereby certify that the corner location on this record was determined by me or under my direction and control and that this U.S. Public Land Survey Monument Record is correct and complete to the best of my knowledge and belief.

  
 Signature

1 FEB 2019  
 Date