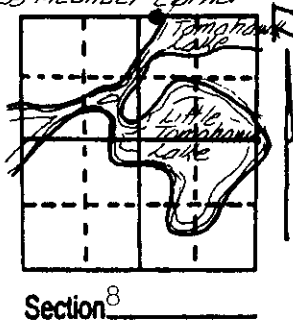
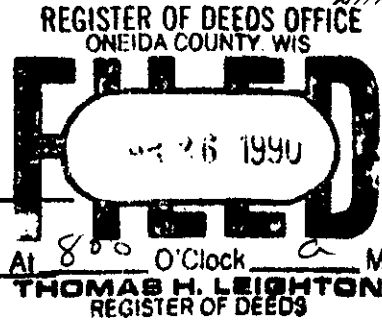


# U.S. PUBLIC LAND SURVEY MONUMENT RECORD

**Note:** This form is intended and designed to fulfill all requirements of Wisconsin Administrative Code, Chapter A-E 7.08 U.S. Public Land Survey Monument Record (3) (a) (b) (c) (d) (e) (f) (g) (h) (i). An additional sheet may be added if necessary to conform with said requirements.

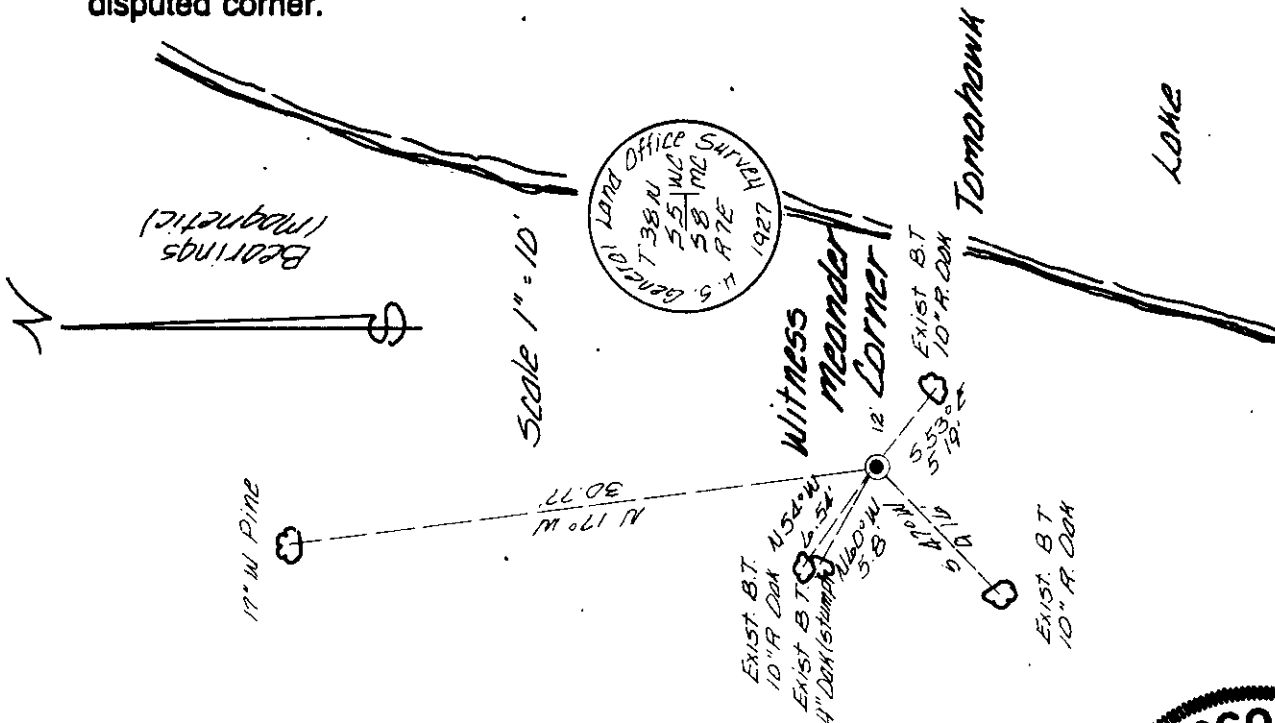
(a) Corner location: Township 38 North  
 Range 7 East/West  
 Town/City/Village Lake Tomahawk  
 County Oneida



(b) (f) (g) (h) Description of monument found at this corner and if it was accepted, state all evidence (material, testimonial, occupational, plats, records, other monuments) used as a basis for accepting. If not accepted or if nothing was found, state evidence used as basis for establishing location. If reestablished through lost corner proportionate methods, indicate all monuments, distances and directions used to establish.

Aug 1863 - Alexander Anderson, Deputy Surveyor, set meander corner. Bearing trees: 12" W. Pine, N35 W, 27 links; 10" Birch, S49 W, 11 links.  
 Aug-Sept 1927 - Earl G. Harrington and Jos C. Thoma, U.S. Cadastral Engineers, resurvey in section 4 and 5 recovered true point for meander corner from original NW bearing tree: White Pine stump, N35 W, 27 links  
 Set witness corner N88 34'W, 30 links; iron post 3 ft. long, 2 inches dia. 26" in ground. No new bearing trees marked.  
 July 13th, 1989 - James D. Rein, Registered Land Surveyor, recovered GLO brass capped 2" O.D. iron pipe. Existing bearing trees: 3" W. Pine, N54 W 6.54'; 10" R. Oak, S47 W, 9.16'; 10" R. Oak, S53 E, 5.19'; 9" R. Oak stump, N60 W, 5.8'. Made new bearing tree: 15" W. Pine, N17 W, 30.77'. Set plastic post 1 foot south of corner.

(c) (d) (e) Plan view of corner with ties to established corner, show the distance between the two corners and also indicate the ties to the 4 witness monuments. If in disagreement with previously established corner, show the distance between the two corners and also indicate the ties to the



(i) I, James D. Rein RLS NO. 1234  
 (type or print name) certify that the corner location on this record was determined by me or under my direction and control and that this U.S. Public Land Survey Monument Record is correct and complete to the best of my knowledge and belief.



James D. Rein Signature  
 August 21st, 1989 Date

Index No. E 7-8

3807050016