

# U.S. PUBLIC LAND SURVEY MONUMENT RECORD

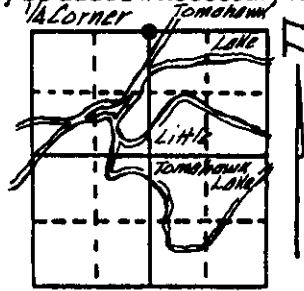
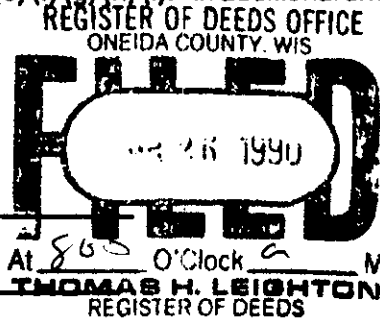
**Note:** This form is intended and designed to fulfill all requirements of Wisconsin Administrative Code, Chapter A-E 7.08 U.S. Public Land Survey Monument Record (3) (a) (b) (c) (d) (e) (f) (g) (h) (i). An additional sheet may be added if necessary to conform with said requirements.

(a) Corner location: Township 38 North

Range 7 East/West

Town/City/Village Lake Tomahawk

County Oneida

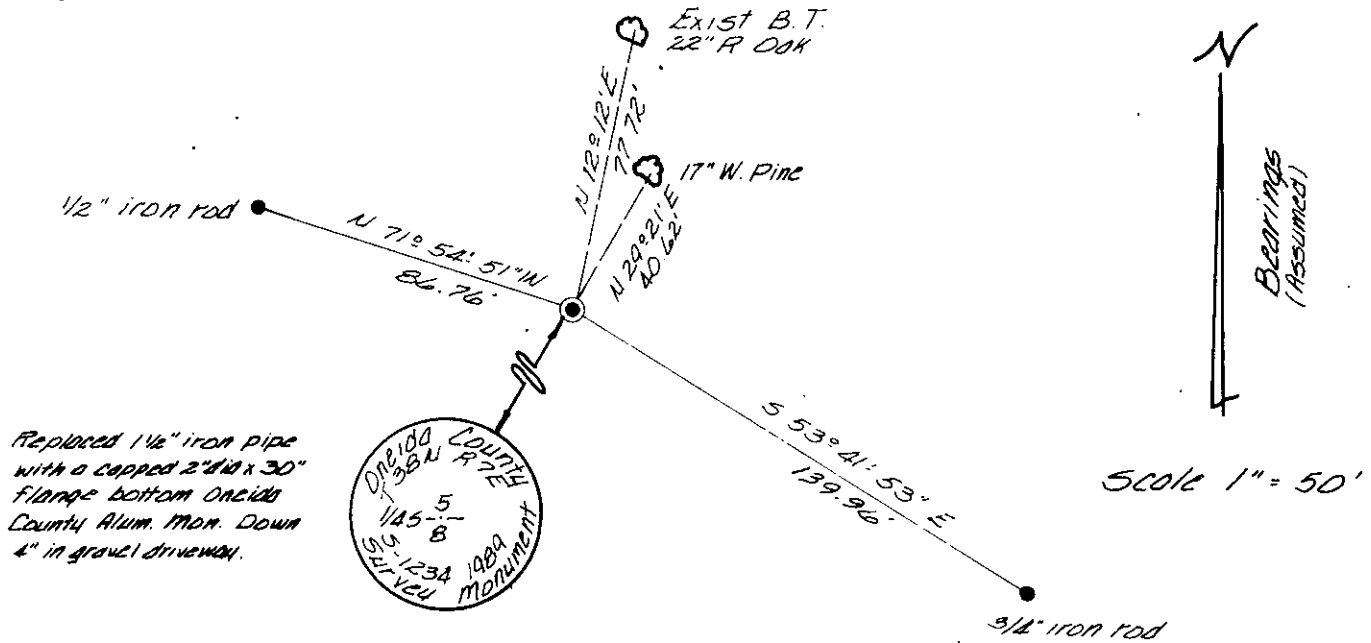


Section 8

(b) (f) (g) (h) Description of monument found at this corner and if it was accepted, state all evidence (material, testimonial, occupational, plats, records, other monuments) used as a basis for accepting. If not accepted or if nothing was found, state evidence used as basis for establishing location. If reestablished through lost corner proportionate methods, indicate all monuments, distances and directions used to establish.

Aug 1863 - Alexander Anderson, Deputy Surveyor, set  $\frac{1}{4}$  section post. Bearing trees: 9" Birch, S33°W, 12 links; 9" Birch, N52°E, 6 links.  
 Jan-March 1965 - Robert L. Iig, W.C.D. Surveyor, set  $\frac{1}{4}$  corner equal distance between original SW corner and re-established southeast section corner.  
 July 13th, 1989 - James D. Rein, Registered Land Surveyor, recovered a 1 $\frac{1}{2}$ " iron pipe. Replaced it with capped 2" dia. x 30" flange bottom Oneida County Aluminum Monument. Existing Bearing trees: 22" R. Oak, N22°12'E, 77.72'. See sketch below for new corner reference ties.

(c) (d) (e) Plan view of corner with ties to established corner, show the distance between the two corners and also indicate the ties to the last 4 witness monuments. If in disagreement with previously established corner, show the distance between the two corners and also indicate the ties to the disputed corner.



(i) I, James D. Rein Registered Land Surveyor No. 1234  
 (type or print name) certify that the corner location on this record was determined by me or under my direction and control and that this U.S. Public Land Survey Monument Record is correct and complete to the best of my knowledge and belief.

James D. Rein  
 Signature

August 21st, 1989  
 Date



3807050020

Index No. E 7